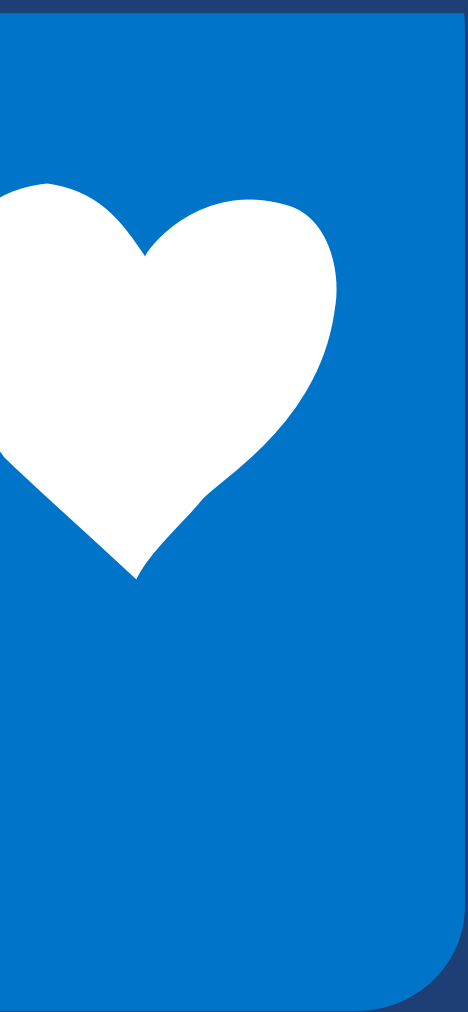


# NEIGHBOURHOOD HOUSES **BARWON**



**2020 Annual Report**

## vision

Community development principles and practice delivered with a sense of unity and a collective voice.



## mission

Enabling the delivery of quality community development through high level representation, advice, guidance and support.



## purpose

Neighbourhood Houses Barwon Inc will provide “a collective voice and a sense of unity” for its members.

### PRIORITIES:

- Sharing resources, information and knowledge
- Linking members with each other and our community partners
- Community development
- Conversations- positive and productive
- Advocacy

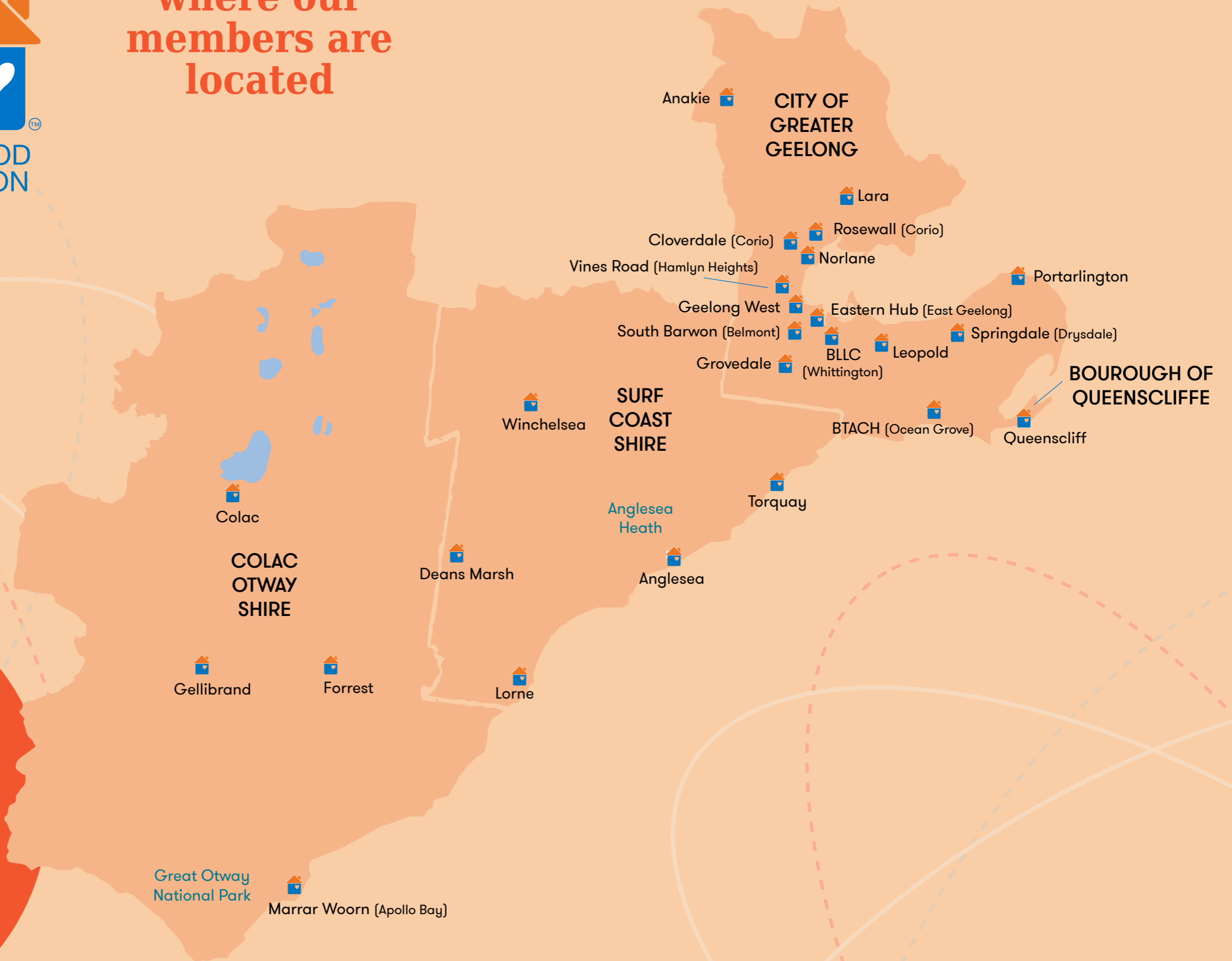
## what's inside

Our Statistics	6
Chair's Report	8
Networker's Report	9
Partners	10
City of Greater Geelong	10
Colac Otway Shire	10
The Surf Coast Shire	11
Dept. of Health and Human Services	11
Anakie & District Community House	13
Anglesea Community House	13
Bellarine Living & Learning Centre	14
Colac Neighbourhood House	17
Bellarine Training and Community Hub	18
Deans Marsh Community Cottage	18
Eastern Hub Community Centre	19
Forrest & District Neighbourhood House	19
Geelong West Neighbourhood House	21
Gellibrand Community House	21
Lara Community Centre	22
Leopold Community & Learning Centre	22
Lorne Neighbourhood House	23
Marrar Woon Neighbourhood House	23
Norlane Community Centre	24
Portarlington Neighbourhood House	25
Queenscliffe Neighbourhood House	26
Rosewall Neighbourhood Centre	26
South Barwon Community Centre	27
Springdale Neighbourhood Centre	27
Torquay Neighbourhood House	28
Vines Road Neighbourhood House	29
Winchelsea Community House	29
Network Treasurer's Report	30
Audit Report	31
Profit & Loss Statement	32
Balance Sheet	34

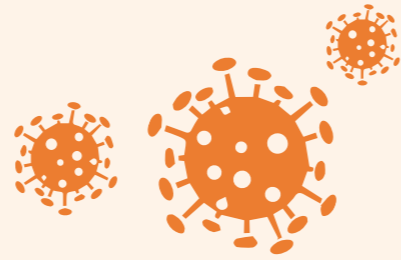


NEIGHBOURHOOD  
HOUSES BARWON

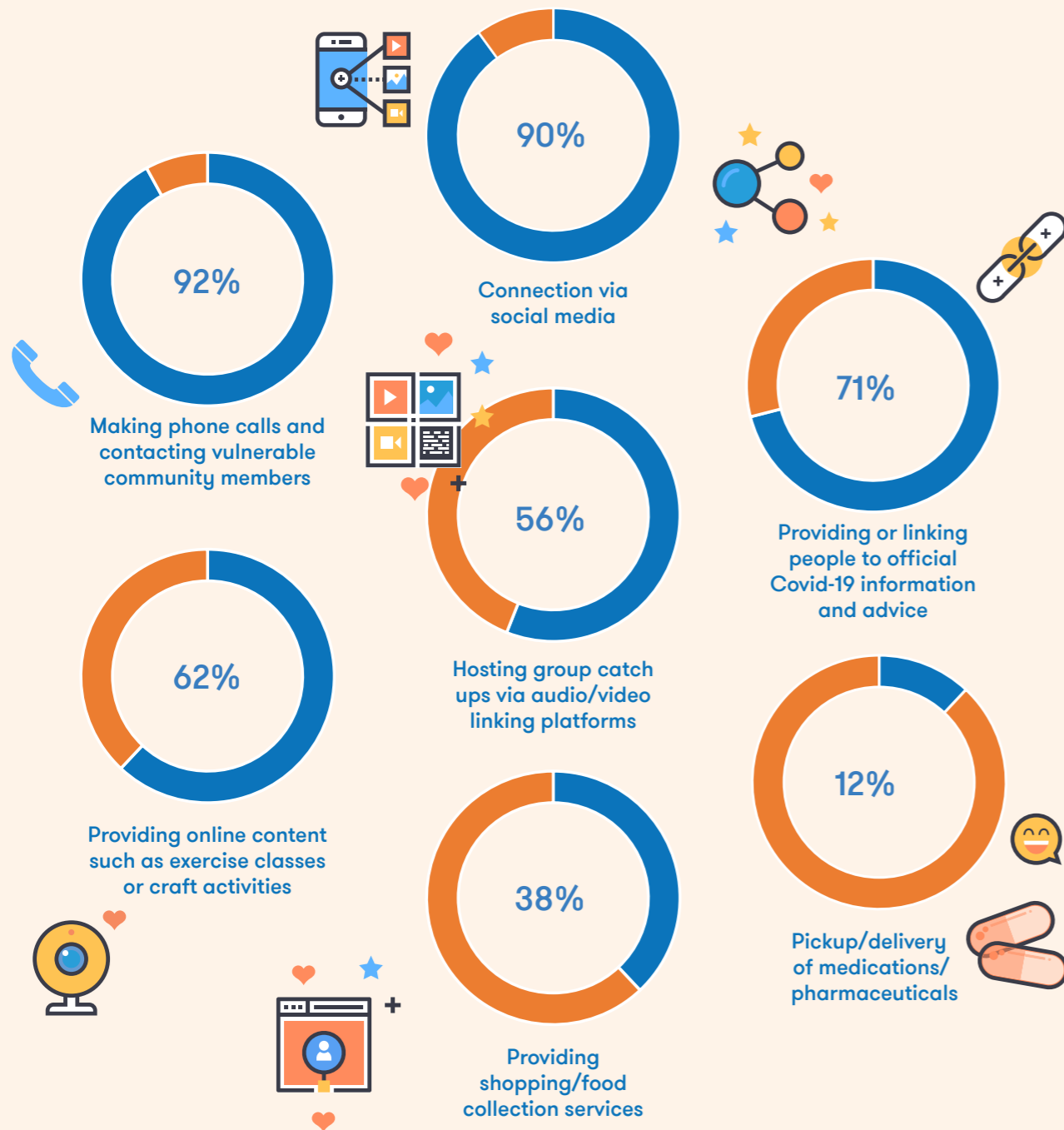
# where our members are located



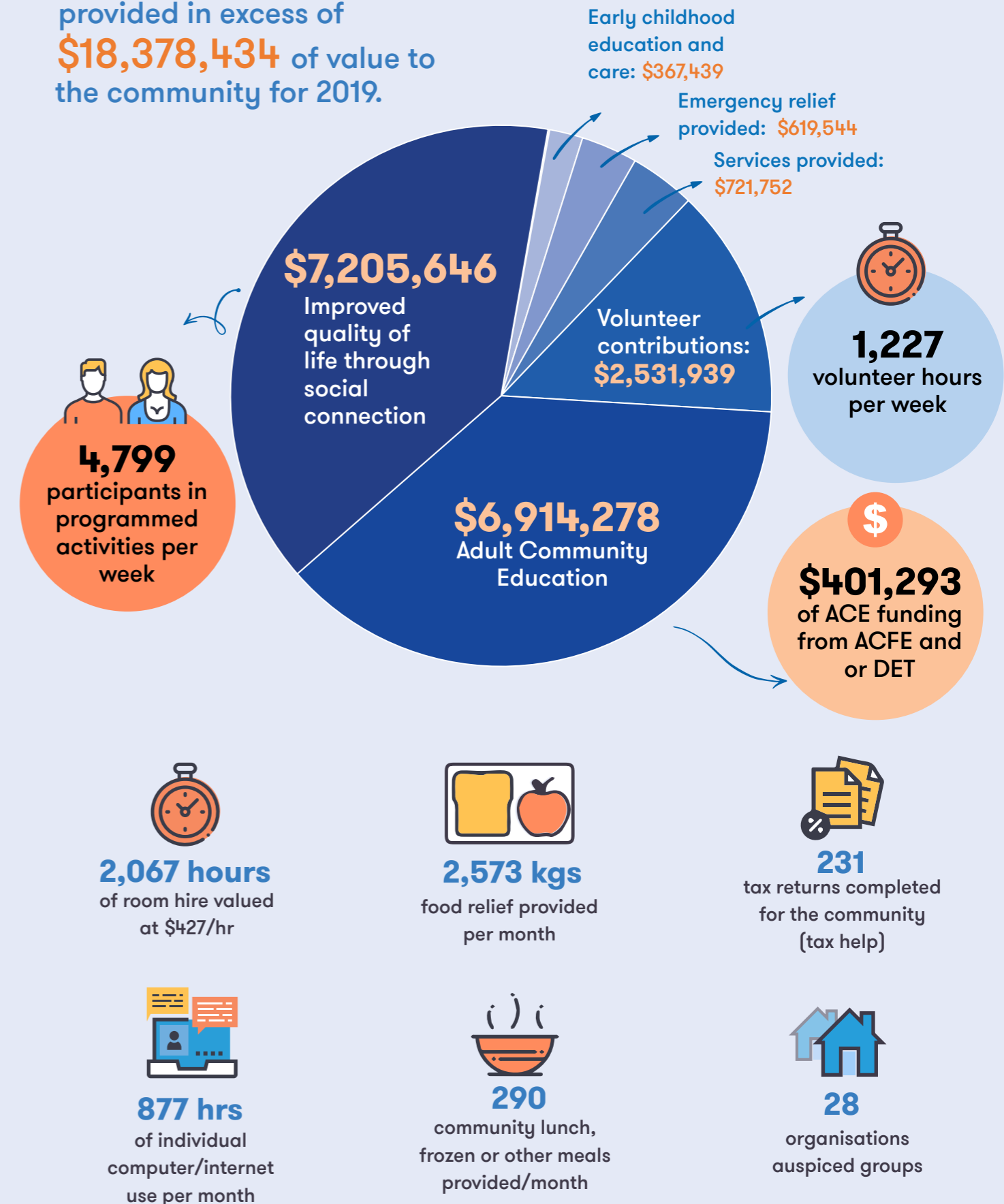
# key stats



## Types of remote services and activities Neighbourhood Houses in Barwon offered their communities during COVID-19



In NHBarwon, 20 Neighbourhood Houses provided in excess of **\$18,378,434** of value to the community for 2019.



This is based on data provided through the Neighbourhood House Survey 2019 conducted by Neighbourhood House Victoria.

# president's report

## ROLE OF PRESIDENT/CHAIR: KEEPER OF THE PROCESS

Our sector is seeing healthy turnover of people involved, not least at NHBarwon, where this year we welcomed Fleur Parry on board for only a short time until family commitments cut short her time with us. We are very fortunate to have Julia Leonard as part of our team and she was able to skilfully fill the void until we recruited the very experienced Jill Evans into the role of Network Coordinator.

This changing staff scenario has brought into sharp focus the key role of our Exec Committee and specifically for me, prompted me to reflect on the role of the Chair/President. I have again been reminded that this particular leadership role is one of 'Keeper of the Process' – so that strong governance is not only a catchcry but embedded practice. When there is turnover of personnel this becomes even more important as knowledge and skills are 'lost' and renewed. It's so important to ensure there is ongoing understanding and consistency with the principles and practices of the sector as outlined in both the funding agreements and many foundational documents. This focus on community development and on facilitative collaborative practice is fundamental to our sector. Just as in the Houses, NHBarwon staff need solid induction into these sector principles to support you, our members to undertake your work across our many communities.

Our governance processes include ensuring there are systems in place to induct, support and monitor staff performance, along with sound financial management, accountability procedures and open communication channels.

As 'keeper of the process' at NHBarwon, I am confident that our important yet 'behind the scenes' leadership roles are providing what's required for our staff to be out and about as the public faces of the Network, providing vital, connective, supportive services to our members.

This has never been ore important than during the Covid year of 2020, where many Houses have closed their doors but not their services. Together Jill and Julia have explored and utilised emerging technologies to provide weekly catchup with members that have built relationships stronger than even before – paradoxically, in isolation strong connections have been made.

I give acknowledgment and thanks to those committed people who have served on the Exec Committee for the past year, yet reflect that this is not about us – it is about the work that's done on the ground and in the Houses because we've built and maintained good governance processes. That said, I give special acknowledgement to Wendy Greaves who is standing down after having served 5 years as Treasurer of the Network and has brought great clarity and accountability to our financial systems and reporting.

YOURS IN FRIENDSHIP,



*Beth Davidson*  
**BETH DAVIDSON, OAM.**  
PRESIDENT, NEIGHBOURHOOD  
HOUSES BARWON

# networker's report

I started in the job as the Barwon Neighbourhood Houses Networker in a part time capacity in January 2020 before moving into full time (20 hours a week) in March – just as COVID became a 'thing' – and our world changed. I had only enough time to meet Julia and start to settle into the headquarters of the Network in a very small office at the Grovedale Community Hub, visit 5 neighbourhood houses before the first lockdown. If ever there was a time to draw on my experiences over my lifetime of work this was it. I am certainly very clear about my strengths and my weaknesses and to my amazement I found that Julia, Beth, Wendy, Jenny and others from the Network Governance Committee could easily compensate for my weaknesses – the things I had to draw on were my confidence that I could find a platform to 'do my job' as well as my connections across the region. There are many things I have learned over the 6 months. Things that have always been the strengths of the neighbourhood house sector, and things that I want to explore with the network to build on so that we meet the demands of the coming months and years.

This Neighbourhood House world is strong and resilient. The 2019/20 year has proven that. Since January 2020 I have worked alongside people who have tackled a completely different way of working and found that their community members have responded strongly. Online courses, outdoor gatherings, online community celebrations, and importantly the sharing of ideas, skills, and funding has meant that the Barwon Network of houses has been a strong partner with others to provide measures of connection and collaboration during the various stages of lockdown. Through the facility of Zoom there has been an opportunity for house co-ordinators to come together weekly. This has opened up an avenue for conversations to happen that haven't had the time or place previously. From my perspective it has meant that the Network can focus its resources more efficiently and effectively.

I have also been able to very quickly get a feeling of what needs to be done, and to work with the Department of Health and Human Services (DHHS) and local government (Geelong, Surfcoast, Colac Otway and Queenscliff) to best use the facilities that neighbourhood houses have. This has varied across the region as you would expect – some houses have had to take on a role unfamiliar with their purpose but is exactly the role that that community needed. Some houses have use their natural surroundings to bring people together, talking circles, walking groups, are some examples. There have been house co-ordinators delivering weekly updates, on-line cooking demonstrations and mask making have featured strongly. It is little wonder that a neighbourhood house is a rich and valued place in those communities lucky enough to have one.

To the 24 neighbourhood houses that make up the Barwon Region I offer my thanks and acknowledge your work over the 2019/2020 year. I look forward to getting to know you better and be in a position to strengthen our work with you help.

From the Network we have commenced our journey towards the development of our Reflect Reconciliation Action Plan. This important piece of work commenced some time ago but with the change in Network staff has been on the back burner for a while. I would hope that we can report at the next Annual General Meeting on the progress.

In conclusion I would like to acknowledge the leadership of the Barwon Network Governance Committee Committee for their support for and guidance to me. My thanks to Julia Leonard who has had to be the constant resource to the Network over the year. Julia is a highly skilled community development practitioner who will assist us all to strengthen our work in the future.

**JILLIAN EVANS**  
NETWORK COORDINATOR

# partners



## CITY OF GREATER GEELONG

Neighbourhood Houses are important spaces where the community can go to be supported, encouraged and empowered to live their best lives.

Neighbourhood Houses are also a vital resource for community members experiencing vulnerability or disadvantage, and the efforts in supporting vulnerable residents should be commended. This has never been truer than during the last six months, with the coronavirus (COVID-19) pandemic altering life as we know it.

The City has continued its support of Neighbourhood Houses with more than \$140,000 worth of funding via the 2019-2020 Neighbourhood Houses Grant Program. These grants help Neighbourhood Houses Barwon and Neighbourhood Houses in the region undertake grassroots community development activities while continuing to provide opportunities that benefit the wider Geelong community. Moving forward, these grants can also contribute to the costs of implementing COVID-Safe plans to allow Neighbourhood Houses to re-open and continue delivering programs safely.

Projects supported by this fund in 2019/2020 include:

- The development and publication of Stage 1 of the Neighbourhood Houses Barwon Reconciliation Action Plan
- An animal assisted learning program for at risk students
- Support to increase volunteer numbers and improve governance and training
- A youth drop-in program
- The development of a community garden and play space, utilising technology and organic recycling
- Multiple community events and celebrations
- The creation of a community timeline to explore the history of community events and celebrations
- Community mental health support

Everyone should be proud of their efforts and their work in supporting the community through the challenges of this year. We look forward to continuing our work with Neighbourhood Houses Barwon and Neighbourhood Houses to meet the needs of our community.

**Everyone should be proud of their efforts and their work in supporting the community through the challenges of this year.**

## COLAC OTWAY SHIRE



During these difficult times the role of Neighbourhood Houses across the state and within the Colac Otway Shire has been vital in supporting their communities. Colac Otway Shire recognises this and has worked with the houses to provide food and other supports.

Moving forward the council's relationship with neighbourhood houses will be essential in the council's implementation of the new Local Government Act. This Act requires council to develop, through deliberative consultation with the community, a 10-year Community Vision that will inform the Council's Plan and the Municipal Health and Wellbeing Plan.

# partners



## SURF COAST SHIRE

Surf Coast Shire recognises the role of Neighbourhood Houses in providing social connection and opportunities for community development. With a wide range of programs being offered and adapting to online platforms due to the COVID pandemic, Surf Coast Shire looks forward to continuing to support the 5 houses and the Barwon Network to adapt to evolving community needs.

In 2019-20, Surf Coast Shire contributed \$32,500 to houses and the Surf Coast Shire. Some of the initiatives included:

- Childcare equipment for Lorne
- Recycling station for Lorne
- Community Celebration event for Anglesea

- New membership database for Torquay
- Training and professional development for Winchelsea staff and volunteers
- Development of the Deans Marsh and District Community Action Plan

In addition to funding, Surf Coast Shire supports houses with provision and maintenance of facilities. It has been a challenging 12 months however we look forward to continuing our positive relationships with the 5 Neighbourhood Houses in Surf Coast Shire, adjoining networks and Neighbourhood Houses Barwon.

## DEPARTMENT OF HEALTH AND HUMAN SERVICES



The 2019/2020 saw Neighbourhood Houses in the Barwon region undergo a lot of change. The departure of Fleur Parry in the role of the Networker, and the departure of some long-term Coordinators of the region brought new community development workers into the sector in Barwon with some fresh ideas and new knowledge to share.

The appointment of Jill Evans to the role of the Networker in March has been a highlight for this year and we have been grateful to the strong relationship we have built with both her and Julia Leonard to be able to navigate through the review of the NHCP Guidelines and ensure the feedback from the Barwon region has been included in this process.

March saw some trying times for the sector and I would like to say that our Population Health and Community Wellbeing Team here in Barwon have been in awe of the resilience and the innovation that has come out of the COVID -19 situation with our Neighbourhood Houses, the very definition of strength through adversity.

**...In awe of the resilience and the innovation that has come out of the COVID -19 situation...**



## Anakie Community House

2115 Ballan Road, Anakie VIC 3221



Not just each community house, but the whole world was thrown into a whirlwind of change in 2020, when COVID-19 spread its evil tentacles globally.

How did it affect us? The most positive thing was that many people slowed down, reflected on what really matters and thought of ways to help their fellow-man.

Like so many organisations and individuals, neighbourhood houses did their best. Our huge advantage is that we know residents in our communities. Many contacted us to offer their services to help others. We made priorities and our focus was on the individual person or family, rather than the class or group.

Meetings moved to on-line and proved challenging, but rewarding as a catch-up. Being on-screen, rather than in the flesh, had its humorous moments - the ladies added a bit of lipstick (no need for makeup when the day is spent isolating at home) and we checked the video to see was 'showing' in the background.

New ways to communicate; new ways to exercise; new ways to work. Let's see this as a positive rather than a negative and reflect on life priorities - I'm guessing they have changed since 2019! Let's make them a good change.

### LAST BUS TRIP IN APRIL

- Pauline, Andrew (driver), Carolyn, Pat, Glenda, Sue and Roneta returned to the bus with the buy of the day - toilet rolls!



## Anglesea Community House

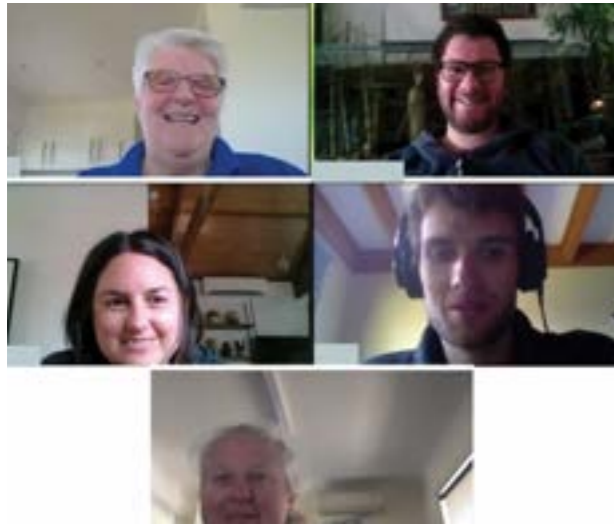
5 McMillan St, Anglesea



Whilst 2019-2020 has provided some challenges to the way we work with community it has also provided many opportunities for innovation and flexibility in how we engage with our local community. ACH continues to facilitate and support community initiatives that align with our strategic goals such as building on the initiative of a local community member to develop a very successful project of ACH, the Anglesea Twilight Farmers' Market. We continued to offer Learn Local opportunities to the community through our Stay Connected course. Albeit sometimes through the window or socially distanced on the balcony, we were able to help people get online and stay

on touch with family and friends by building confidence to use technology and apps like zoom. Other projects that grew in response to a need to bring people together while staying COVID Safe, included a community Resilience Rug project and a Street Library, bringing together volunteers from Anglesea Men's Shed and our sustainability project, The Resale Shed (salvaging rubbish from the Anglesea landfill to be recycled, upcycled or repurposed). Another highlight of the year has been being able to further develop our volunteer capacity and work towards creating meaningful opportunities for community members to participate and contribute.

ANGLESEA



**Bellarine Living & Learning Centre**

20 Worden Crt, Whittington



The 2019/20 year gave the Bellarine Living & Learning Centre a chance to:

Undertake our community engagement consultation which will contribute to the strategic planning process that commences later this year. This consultation looked different than we had originally imagined it would but we gained the community insight that wanted

- Review how we engage with our community and rethink how this might look in a post covid world. This will become a priority moving forward
- Reviewed how we work, how we support staff and volunteers including regular operational supervision and support.
- Become experts in using zoom

- Develop stronger relationships with other NH's with increased collaboration and sharing
- Participate more with NHVic through social media and online forums







## Colac Neighbourhood House

23 Miller St, Colac VIC 3250



ROSEWALL



This year in response to COVID we worked with Colac Area Health, our auspicing body to establish a 1800 support line to help people get food, medical supplies, clothing, as well as information on test results, how to manage rules and regulations and how to access funds.

So far we've received well over 2,400 calls which makes me incredibly proud.

We're also making regular calls out to people who we know are vulnerable, just to check in and make sure they're doing okay.

Our premises have also been a COVID testing site with over 6,000 tests conducted at the house so far. I think this pandemic has made it really clear what an asset our neighbourhood house is to the Colac community.

Knowing that neighbourhood houses are truly there for their communities in unprecedented times, offering immediate responses with flexibility, makes me feel proud to be part of such a wonderful sector.

## Bellarine Training & Community Hub

1 John Dory Drive, Ocean Grove 3226



We welcomed so many new and exciting things this year, and in particular, the way we engage with our communities through programs, activities and courses. Whilst Covid has been a challenging environment, it has provided Bellarine Training & Community Hub with momentum to the way it promotes, connects and delivers. With an enhanced focus to online delivery of courses/programs, marketing and communication, through social media such as Facebook, the Centre has flourished.

The ability of the trainers, tutors, students and community to respond to this has been fantastic, who together with the Committee of Management regularly conduct meetings, classes and catch-ups on tools such as Zoom. That said, post Covid, we look forward to a future with a busy active Centre and a dynamic online presence. Here's to 2021!

## Deans Marsh Community Cottage

10 Pennyroyal Valley Rd, Deans Marsh 3235



This year The Deans Marsh Community Cottage has been able to think about how to work with our community to create the Deans Marsh and District Community Action Plan - and then how to make it happen.

Between October and December 2019, a community consultation and engagement campaign called MADCAP was conducted.

The campaign was about connecting, listening and generating ideas about how our community can work together to shape our future.

The overall aim of the campaign was to utilise the ideas and opinions generated as the basis for the Deans Marsh and District Community Action Plan 2020 - 2030.

The Deans Marsh and District Action Plan was formulated by members of the Deans Marsh and District Community through the MADCAP campaign. The project was aided by and written with the assistance of Peter Kenyon from the Bank of I.D.E.A.S.

The creation of the Deans Marsh and District Community Plan was initiated by the DMCC with financial support from Regional Development Victoria through the Stronger Regional Communities Program together with funding and staff support from the Surf Coast Shire Council.

We look forward to working with our community in bringing the plan to life!

**We welcomed so many new and exciting things this year, and in particular, the way we engage with our communities through programs, activities and courses.**

## Eastern Hub Geelong

285A McKillop Street, East Geelong 3219

Eastern Hub  
Geelong

In spite of a tumultuous year, Eastern Hub's community exhibition space, Rachinger Gallery, hosted a number of remarkable exhibitions.

**What Have You Got to Lose?** was curated by artist and activist Janine McGinness. Featuring the work of thirty women artists, with artforms ranging from sculpture, video and photography to mosaics and textiles, artworks focused on that which is precious and at risk, and included major works by Jahkarli Romanis and Anita Barrett.

Launched by Senator Janet Rice, who along with Vicki Perrett, made a powerful speech about the issues facing us all, **What Have You Got to Lose?** also featured a live performance by musician Sarah Carroll.

After a period of closure due to restrictions, the Rachinger reopened with **SpringDale Artists** and was followed by genU's **artX 2020**, an exhibition both actual and virtual.

And Rachinger Gallery at last has a YouTube channel, currently showcasing exhibitions from 2018-19.



## Forrest & District Neighbourhood House

47 Grant Street, Forrest VIC 3236



The 2019/20 year gave the Forrest & District Neighbourhood House a chance to reimagine the way we operate in the face of a pandemic, to remain active in our community with closed doors welcome new supporters during challenging times.

Last year we moved into our lovely new home at the ex DELWP site that was handed over to the community. With different spaces and sheds for a variety of activities, we quickly settled in and started building up our programs. We had rooms to hire to community and local small business, agencies and more. We were getting close to opening up our own community gym, and then Covid-19 became a real threat. We closed our doors and changed the way we operated.

This year our house has been able to think about how we can support our small, close knit community and provide different opportunities to participate in activities from home.

COVID-19 has given us the opportunity to adapt to life as we know it. It has brought out the best in the people of Forrest and surrounds.

Townpeople put up their hands to help, opened their wallets to support and offered their time to volunteer to ensure activities continued.

We have welcomed so many new and exciting things this year including many online events and activities that have kept us connected. From an online talent show, monthly wine and cheese chats, youth group, art group, yoga and fitness classes. We were also been able to host a take away fundraiser for the Cancer council's Biggest Morning Tea, raising \$600!

Our popular community lunch (take away) and Aldi rescue food program has continued with community support and amazing volunteers who have given up their time to make sure meals are prepared each week and distributed to vulnerable households.

Even though the last 6 months have been very challenging for us all, it's been amazing to see how quickly we can adapt to the situation and thrive until things return to a more 'normal' way.



TORQUAY

### Geelong West Neighbourhood House 89 Autumn Street, Geelong West 3218



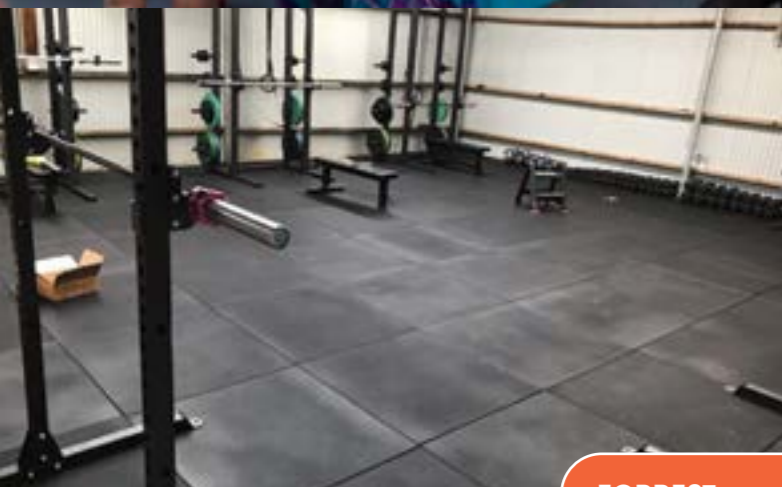
This year has been quite a challenge for Geelong West Neighbourhood House, events and classes cancelled, plans put on hold, but there has also been an opportunity to explore new ways of connecting with our community, a digital connection. Back in March, when the first lockdown occurred, we looked outside the box of how we could continue to connect with our community. We started running some of our classes via zoom, including Yoga, Pilates and Qigong. This was quickly embraced and we have noticed that lots of our members liked the choice of staying home, feeling safe and warm and still participating in their chosen activity.

For other new students with disabilities or children with disabilities, it meant they could participate in an activity for the first time ever.

We also ran some zoom meetings just to connect with the local community, a chance for them to get together in a safe place, facilitated by a psychotherapist, and talk about their feelings, fears and worries around the changes the pandemic has made in their lives.

So while yes there have been lots of challenges faced, we have learnt some new skills which will continue long after things go back to "COVID normal".

### Gellibrand Community House Rex Norman Reserve, 5 Main Road, Gellibrand, 3239



FORREST



## Lara Community Centre

9-11 Waverley Road, Lara 3212 VIC



The 2019/20 year gave the Lara Community Centre a chance to take a breath and think about what is really important. We have been able to re-evaluate the things we do and the reasons we do them, as well as how we do them.

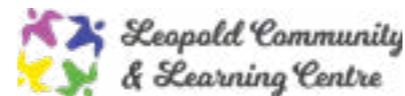
This last year, and especially the last 6 months has been a time of learning, sharing, discovering commonalities and forging new ties. We have been able to find our inner strength and discovered just how resilient we are.

COVID-19 has given us the opportunity to think about how we move forward in the community and what it is we value the most.

COVID-19 has given us the opportunity to connect or reconnect with many of our colleagues, taking us (virtually) out of our centres (and lounge rooms) to share ideas and concerns, offer support or just catch up.

## Leopold Community & Learning Centre

31-39 Kensington Rd Leopold VIC 3224



The 2019/20 year gave the Leopold Community and Learning Centre Neighbourhood House a chance to grow our programs and demographics in the early half year our Animal Assisted Learning program focused on youth who were not attending school due to anxiety was successful in re engaging students in learning.

This year our house has been able to think about how to be more responsive to our local community needs and introduce one off workshops on various topics to cater to a broader demographic.

COVID-19 has given us the opportunity to consider alternative delivery modes and trial them to remain engaged with our community.

We have welcomed so many new and exciting things this year including the commencement of our Active Seniors program which has had success with improving both the mental health and mobility of seniors who participated in the various activities on offer.

## Lorne Community House

16 Mountjoy Pde, Lorne 3232



In the latter months of 2019 the Lorne Community House was busy than ever with new and regular friends constantly visiting. Then when we hit March 2020, like everyone our doors closed. We connected with our community online and by telephone, particularly with the more isolated regular visitors to the House. This gave us the chance to check in and have both in depth and lively conversations one on one.

Many of our tutors went online to continue classes as we all learnt to zoom. We have recently created a local photo challenge to give our community a way to share the changes in our town.

We cannot wait to try new, restricted and safe activities in our community over the coming months.



## Marrar Woorn Neighbourhood House

6 Pengilley Ave, Apollo Bay 3233



The 2019/20 year gave the Marrar Woorn Neighbourhood House a chance to work closely with key local organisations in community development in the areas of bushfire awareness, the arts and small business.

This year our house has been able to think about how to best engage with our community. We have increased our internet based engagement as well as printed newsletters and letterbox drops as many people in our catchment have unreliable internet, or are not interested in this technology.

COVID-19 has given us the opportunity to truly engage with our community in a way that unites us through shared experiences.

We functioned as an information portal for the community for health, wellbeing, education and linked people to the services they needed including financial, legal, food security and mental health.

We have welcomed so many new and exciting things this year that will serve our community for years to come, like our new program for local bushfire awareness and our facility developments for the performing arts.



A volunteer drops newsletters for people who have unreliable internet or are not into technology





NO RLANE



### Norlane Community Centre

Windsor Park, 39a Rose Ave, Norlane 3214



Norlane Community centre ended 2019 in the first ever Christmas in the North and Summer Solstice event, sponsored by the City of Greater Geelong, and culminating in a wonderful shared meal for over 200 people which was organised by an amazing team of local residents.

The constraints of COVID in 2020 resulted in activation of our online presence and reevaluation on supporting our community through COVID-19. For the first time we have online demonstrations for Community Kitchen with family home chef Nathan.

The board have had time to pause and re-evaluate our strategic direction and plan for moving forward. We now have avenues to keep in touch with our members in different ways.

### Portarlington Neighbourhood House

Parks Hall, 87 Newcombe St, Portarlington VIC 3223



This year Portarlington Neighbourhood House celebrated a huge 10 year birthday bash, attended by Lisa Neville, also at the opening of the PNH all that time back. Membership has grown to a staggering 650 members, with more than 40 activities run each week – a testament to the strength of the skill-share model unique to PNH with more than 70 volunteers donating their time and expertise to run the office and deliver the programs.

Now struggling our way through a second lockdown, our members have kept busy sewing reusable masks; sharing art, craft work and jokes via email; playing guitar on Zoom; continuing to publish the Portal, a polished writing collection that can be read here: [www.portnh.org.au](http://www.portnh.org.au)

Lockdown has given us precious time to get some of our systems in order, particularly to devise a super new membership database which we are keen to share with other NHs through NHVic.

Lockdown has given us precious time to get some of our systems in order.

## Queenscliffe Neighbourhood House

3 Tobin Dr, Queenscliff VIC 3225

The 2019/20 year has been a year of great change for Queenscliffe Neighbourhood House. We farewelled Carolyn Williams, our coordinator of 20 years and welcomed our new coordinator Greg Thorpe.

COVID-19 has made 2020 a very challenging year in which we restructured things to continue reaching our community and engaging them via online programs. We look forward to getting back to face to face programs once restrictions are lifted.



## Rosewall Neighbourhood Centre

36 Sharland Rd, Corio 3214

This year, when our community needed us most, Rosewall Community Centre volunteers and staff have been there to engage and inspire 3214 locals. Our gardening group has been a great way to learn together, practice in our own backyards and share food with the community. We couldn't be prouder of our sewing group, who channeled their community spirit into making scrubs for nurses and masks for the community.

Even though youth group has looked a little different, care packages and sharing new experiences have made it as exciting as ever! Pottery and mosaic groups have pivoted from face to face to online, allowing participants to tune-out and lose themselves in some relaxing craft. Despite the technology-related challenges, this year has shown our community the importance of mindful relaxation, checking in on mates and sharing what you have with others.



## South Barwon Community Centre

33 Mt Pleasant, Rd, Belmont 3216



The 2019/20 year gave the South Barwon Community centre a chance to experience the work we do to the extreme. The first part of this financial year contained the majority of the Transitions Streets Geelong PMP project.

We did everything from a hands on pruning and permaculture day in July with 25 people, through an event a month culminating with the sustainability festival at Deakin with about 2500 people, on the first week of March.

Since then COVID-19 has given us the opportunity to breathe. We had probably taken on more and should have employed focused specialist to complete some of the things we did. However a wonderful learning experience. How many jigsaws can we all do?



## SpringDale Neighbourhood Centre

17-21 High St, Drysdale 3222



The 2019/2020 year gave SpringDale Neighbourhood Centre the chance to shine again. This year we have been able to leap into online learning and bring the community with us. As usual we have been able to partner with other organisations and groups to share physical rooms and more recently Zoom rooms.

We have 6 months of incredibly positive SpringDale Messengers – I think they will become treasures of what kept us happy during COVID-19.

One of the biggest community achievements has been the opening of our 40 year in the making Drysdale Ring Road. We advocated for this infrastructure and helped the community achieve it.





## Torquay Community House

14 Price Street, Torquay 3228



The year 2010/2020 gave Torquay Community House a chance to enjoy the benefits of our new coffee shop and daily coffee! The Friendly Bean was well received by all Community House members while it lasted and something we all look forward to returning too.

This year our Community House has been able to think about the community house community as opposed to the broader community which we tend to focus on in search of identifying a need within the community. Sometimes the need is closer to home – it's in your House! The reason being, we started a membership drive and noticed that it gave people a sense of belonging and pride in their individual groups.

This was again magnified by COVID-19 as groups that chose to decline our offers of an on line platform became quite independent and found ways to communicate and watch out for each other separate to our efforts.

Which reminds us while we may be the vehicle that can bring people together we don't necessarily drive the vehicle.

We have welcomed and cursed many things this year. Our online experience mainly, even though it was very stressful, challenging and at times we even joked that our learning curve was bigger than the COVID curve when we first went into lock down, it showed us how resilient we are as a sector and it has added to what we can now provide. There are many ways to not only communicate and work but also ways in which we engage with community members.

At the end of the day whether it be zooming, making a call, sending a text, going for a walk with or making a meal for someone, it's the connecting and connection that is so important. It's vital and that is what I believe Community Houses do best.

## Vines Road Community Centre

37-61 Vines Rd, Hamlyn Heights 3215

COVID-19 has given Vines Road Community Centre the opportunity to engage with our community on a more personal level. We found that our traditionally silent community were busting to see and talk to people either online or in person during that very small window that we were operational. Covid-19 has also given the centre the opportunity to dive into video content creation and we have found a whole new audience on our YouTube channel.



## Winchelsea Community House

28 Hesse St, Winchelsea 3241



The 2019/2020 year gave the Winchelsea Community House a chance to review all our operations and develop a covid safe plan to enable us to deliver suitable activities and services at the times that the Community House was permitted to be open to the public.

This year our house has been able to think about alternative ways to work with our community. We have successfully been able to keep connected via zoom, telephone and email contact.

COVID-19 has given us the opportunity to understand how quickly things can change and how grateful we should be to have been able to look after all our staff and volunteers and keep them safe from COVID in the workplace.

We have welcomed so many new and exciting things this year like our walking group and gentle movement classes that have been delivered under the Musculoskeletal Grant Funding.

**We have successfully been able to keep connected via zoom, telephone and email contact.**



## network treasurer's report

Neighbourhood Houses Barwon Inc. is pleased to report a net surplus of \$46906.25 for the year ended 30 June, 2020. In what has been an extraordinary final five months of the year Neighbourhood Houses Barwon Inc. has received financial support from the government via the covid-19 initiatives to assist business including the jobkeeper payment, the cash boost payments and the Business Support Grant. This along with savings in the areas of wages with a gap in time between when Christine Brooks left the organisation and when Jill Evans took up her full hours has enabled us to achieve this result.

At the time of writing this report the immediate future still remains extremely uncertain as to when we can fully reopen Neighbourhood Houses in the Barwon Region. We are also unsure of what government support we will qualify for moving forward particularly for the period from July to December 2020. This makes budgeting very difficult but the committee have approved the budget for the period 1 July 2020 to 30 June 2021 with a surplus of \$7602.00

We do need to be aware that costs are continually increasing and we continue to look for grant funding to support and fund specific projects.

It is great that Jill Evans has settled in so well and herself and Julia Leonard are working so well together to support the houses in Barwon.

Just like us all they have both been working in very difficult circumstances since March 2020 and I would like to recognise and thank them both for the amazing job they are doing. They have had to support houses in many different ways and with many issues far outside their normal job roles.

Christine Gibson our Bookkeeper has continued to do a wonderful job keeping our books in order and I would like to thank her for her work during the year also in difficult circumstances. Our thanks also to Mark Wilkinson our auditor for auditing our annual accounts.

After five years in the role of Treasurer I will be leaving the committee this year. I have enjoyed my time and working with such a great group of people and I wish the staff and incoming committee of Neighbourhood Houses Barwon all the very best for the coming years.

**WENDY GREAVES**  
HONORARY TREASURER

**I have enjoyed my time and working with such a great group of people and I wish the staff and incoming committee of Neighbourhood Houses Barwon all the very best for the coming years.**

Wendy Greaves

## auditor's report

**Neighbourhood Houses Barwon Inc.**  
ABN 43 226 845 853  
**Independent Audit Report to the Members**

### Scope

I have audited the attached financial report, being a special purpose financial report comprising Detailed Balance Sheet and Profit and Loss Statement for the year ended 30 June 2020 of the Neighbourhood Houses Barwon Inc. The Committee is responsible for the financial report and has determined that the accounting policies used are appropriate to meet the requirements of the *Associations Incorporation Reform Act 2012* and are appropriate to meet the needs of the members. I have conducted an independent audit of this financial report in order to express an opinion on it to the members of Neighbourhood Houses Barwon Inc. No opinion is expressed as to whether the accounting policies used are appropriate to the needs of the members.

The financial statements have been prepared for the purpose of fulfilling the requirements of the *Associations Incorporation Reform Act 2012*. I disclaim any assumption of responsibility for any reliance on this report or on the financial report to which it relates to any person other than the members, or for any purpose other than for which it was prepared.

My audit has been conducted in accordance with Australian Auditing Standards. My procedures included examination, on a test basis, of evidence supporting the amounts and other disclosures in the financial report, and the evaluation of accounting estimates. These procedures have been undertaken to form an opinion whether, in all material respects, the financial report has presented a view which is consistent with my understanding of the association's financial position, and performance as represented by the results of its operations. These policies do not require the application of all Accounting Standards and other mandatory professional reporting requirements in Australia.

The audit opinion expressed in this report has been formed on the above basis.

### Audit opinion

In my opinion, the financial report presents fairly the financial position of Neighbourhood Houses Barwon Inc as at 30 June 2020 and the results of its operations for the year then ended.

Signed on 14<sup>th</sup> September 2020



Mark Stuart Pressland Wilkinson  
ASIC Registered Company Auditor 4485  
Liability limited by a scheme approved under Professional Standards Legislation  
PO Box 235, Leopold Vic 3224



# profit & loss statement

Created: 05-Aug-20 11:08 AM

Neighbourhood Houses Barwon Inc.

45 Heyers Road  
Grovedale Vic 3216

ABN: 43 226 845 853

Email: christine@ceedeedevelopments.com

## Profit & Loss [Last Year Analysis]

July 2019 To June 2020

	This Year	Last Year	\$ Difference	% Difference
<b>Income</b>				
Funding				
DHS - Networker Grant	\$99,640.14	\$95,132.78	\$4,507.36	4.7%
Surf Coast Shire	\$2,500.00	\$2,500.00	\$0.00	0.0%
Colac Otway Shire	\$0.00	\$4,050.50	(\$4,050.50)	(100.0)%
COGG	\$7,500.00	\$11,386.96	(\$3,886.96)	(34.1)%
Geelong Community Found - COGG	\$3,800.00	\$0.00	\$3,800.00	NA
Geelong Connected Communities	\$1,701.48	\$858.58	\$842.90	98.2%
Membership and Subscriptions	\$2,450.00	\$2,505.00	(\$55.00)	(2.2)%
Give where You Live Grant	\$0.00	\$17,329.35	(\$17,329.35)	(100.0)%
Admin	\$2,500.00	\$750.00	\$1,750.00	233.3%
Grants	\$20,173.86	\$13,174.42	\$6,999.44	53.1%
Conferences / Workshops	\$0.00	\$158.73	(\$158.73)	(100.0)%
Grovedale NH Engage Proj	\$0.00	\$7,500.00	(\$7,500.00)	(100.0)%
<b>Total Income</b>	<b>\$140,265.48</b>	<b>\$155,346.32</b>	<b>(\$15,080.84)</b>	<b>(9.7)%</b>
<b>Grant Expenditure</b>				
Art from the N'hood 2019 GCC	\$5,441.48	\$0.00	\$5,441.48	NA
COGG Grant Expense	\$1,000.00	\$8,350.00	(\$7,350.00)	(88.0)%
DHS Tenant Engage Grant J403	\$0.00	\$9,397.20	(\$9,397.20)	(100.0)%
Making Mentors Pilot Pr J 507	\$9,284.29	\$17,235.50	(\$7,951.21)	(46.1)%
Give Where You Live Grant Exp	\$0.00	\$300.00	(\$300.00)	(100.0)%
<b>Total Grant Expenditure</b>	<b>\$15,725.77</b>	<b>\$35,282.70</b>	<b>(\$19,556.93)</b>	<b>(55.4)%</b>
<b>Gross Profit</b>	<b>\$124,539.71</b>	<b>\$120,063.62</b>	<b>\$4,476.09</b>	<b>3.7%</b>
<b>Expenses</b>				
Accounting/Bookkeeping	\$9,292.73	\$8,298.64	\$994.09	12.0%
Advertising	\$0.00	\$1,551.82	(\$1,551.82)	(100.0)%
Bank Charges	\$125.04	\$6.84	\$118.20	1,728.1%
Conferences etc	\$2,132.73	\$350.00	\$1,782.73	509.4%
Consultants	\$576.00	\$890.50	(\$314.50)	(35.3)%
Equipment Expense Low value pool	\$2,212.73	\$0.00	\$2,212.73	NA
Grants - ANHCA Give WY Live	\$0.00	\$7,135.00	(\$7,135.00)	(100.0)%
Gifts etc	\$72.70	\$355.27	(\$282.57)	(79.5)%
Catering	\$1,502.25	\$2,356.36	(\$854.11)	(36.2)%
Web hosting-Internet	\$1,084.00	\$261.84	\$822.16	314.0%
Legal & Accounting	\$214.70	\$0.00	\$214.70	NA
Memberships and Subscriptions	\$992.39	\$991.81	\$0.58	0.1%
MYOB On-line subs	\$840.00	\$525.00	\$315.00	60.0%
Office Supplies	\$1,149.68	\$243.33	\$906.35	372.5%
Postage	\$26.36	\$0.00	\$26.36	NA
Miscellaneous Expenditure	\$31.92	\$0.00	\$31.92	NA
Partnership Administration	\$0.00	\$750.00	(\$750.00)	(100.0)%
Professional Development	\$0.00	\$340.91	(\$340.91)	(100.0)%
Printing	\$859.06	\$2,790.27	(\$1,931.21)	(69.2)%
Venue Hire	\$2,554.55	\$2,788.54	(\$233.99)	(8.4)%
Travel External Yr 19	\$43.74	\$200.00	(\$156.26)	(78.1)%
Web Maintenance	\$0.00	\$3,246.73	(\$3,246.73)	(100.0)%
Employment Expenses				
Staff Amenities	\$175.40	\$107.82	\$67.58	62.7%
Superannuation	\$5,915.54	\$6,672.22	(\$756.68)	(11.3)%
Travel Payroll (KM)	\$960.18	\$537.89	\$422.29	78.5%

This report includes Year-End Adjustments.

# profit & loss statement

Created: 05-Aug-20 11:08 AM

Neighbourhood Houses Barwon Inc.

45 Heyers Road  
Grovedale Vic 3216

ABN: 43 226 845 853

Email: christine@ceedeedevelopments.com

## Profit & Loss [Last Year Analysis]

July 2019 To June 2020

	This Year	Last Year	\$ Difference	% Difference
JOBKEEPER SUBSIDY	\$13,263.69	\$0.00	\$13,263.69	NA
JOBKEEPER-TOPUP	\$4,736.31	\$0.00	\$4,736.31	NA
Wages & Salaries	\$49,660.37	\$84,600.67	(\$34,940.30)	(41.3)%
Portable LSL	\$599.36	\$0.00	\$599.36	NA
Workers' Comp Ins CGU	\$1,366.46	\$1,261.14	\$105.32	8.4%
Other Employer Expenses	\$180.00	\$0.00	\$180.00	NA
<b>Total Employment Expenses</b>	<b>\$76,857.31</b>	<b>\$93,179.74</b>	<b>(\$16,322.43)</b>	<b>(17.5)%</b>
Telephone	\$555.45	\$30.00	\$525.45	1,751.5%
COGG				
COLAC Community Development	\$0.00	\$3,509.85	(\$3,509.85)	(100.0)%
<b>Total Expenses</b>	<b>\$101,123.34</b>	<b>\$129,802.45</b>	<b>(\$28,679.11)</b>	<b>(22.1)%</b>
<b>Operating Profit</b>	<b>\$23,416.37</b>	<b>(\$9,738.83)</b>	<b>\$33,155.20</b>	<b>340.4%</b>
<b>Other Income</b>				
Interest Income	\$1,490.19	\$1,115.88	\$374.31	33.5%
Covid-19 Subsidy				
ATO Cash Flow Boost	\$10,000.00	\$0.00	\$10,000.00	NA
JOBKEEPER SUBSIDY	\$12,000.00	\$0.00	\$12,000.00	NA
Total Covid-19 Subsidy	\$22,000.00	\$0.00	\$22,000.00	NA
<b>Total Other Income</b>	<b>\$23,490.19</b>	<b>\$1,115.88</b>	<b>\$22,374.31</b>	<b>2,005.1%</b>
<b>Total Other Expenses</b>	<b>\$0.00</b>	<b>\$0.00</b>	<b>\$0.00</b>	<b>NA</b>
<b>Net Profit/(Loss)</b>	<b>\$46,906.56</b>	<b>(\$8,622.95)</b>	<b>\$55,529.51</b>	<b>644.0%</b>

This report includes Year-End Adjustments.

# balance sheet

Created: 01-Oct-20 9:14 AM

Neighbourhood Houses Barwon Inc.

45 Heyers Road  
Grovedale Vic 3216

ABN: 43 226 845 853

Email: christine@ceedeedevelopments.com

## Balance Sheet [Last Year Analysis]

June 2020

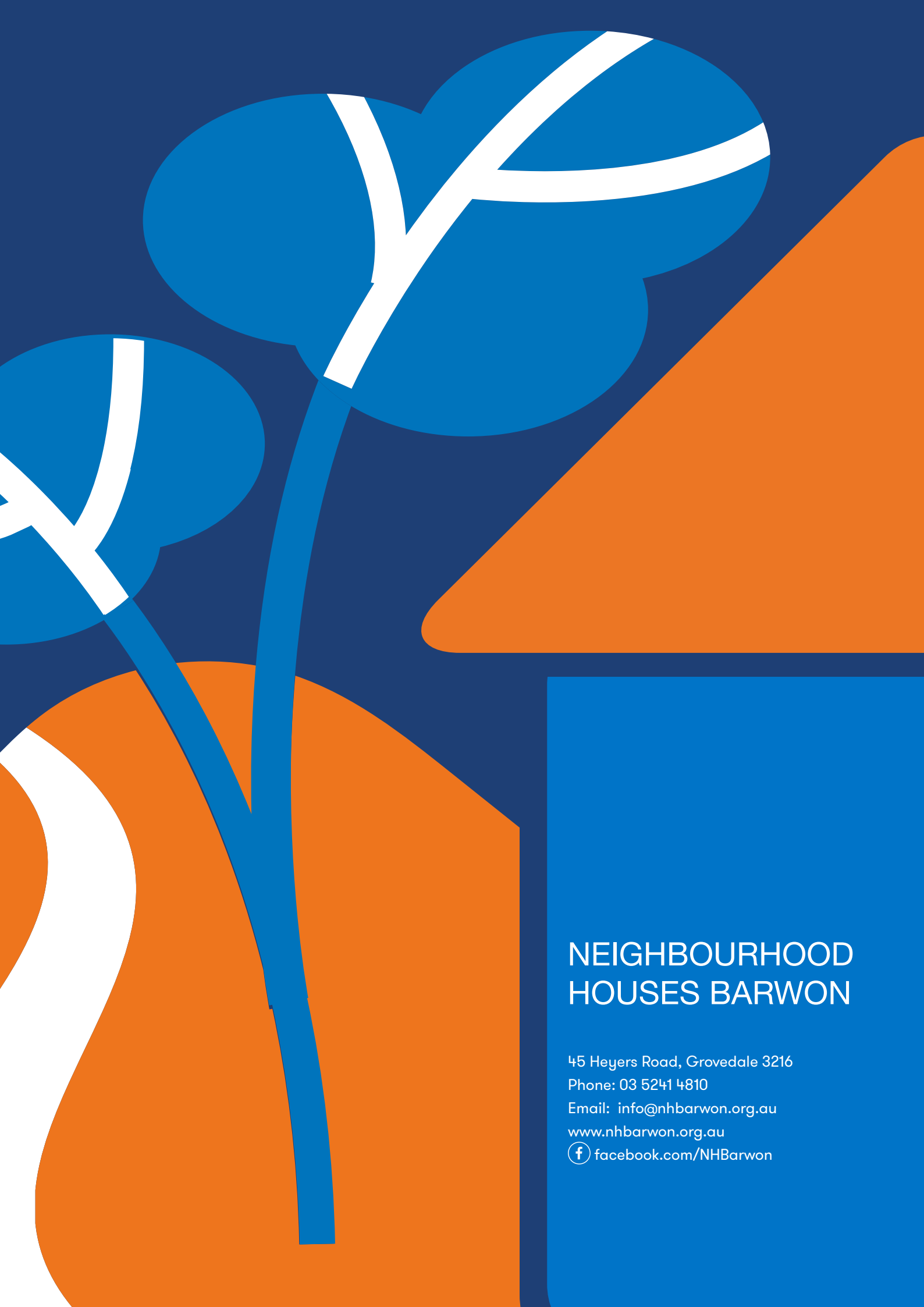
	This Year	Last Year	\$ Difference	% Difference
<b>Assets</b>				
<b>Current Assets</b>				
Cash On Hand				
Cheque Account	\$91,555.13	\$41,330.11	\$50,225.02	121.5%
Load & Go	\$1.00	\$1.00	\$0.00	0.0%
Undeposited Funds	\$0.27	(\$7,087.71)	\$7,087.98	100.0%
Investment Account - A/c 6815	\$63,060.11	\$61,639.18	\$1,420.93	2.3%
TD 3813 Future Leave	\$5,319.46	\$5,250.20	\$69.26	1.3%
Petty Cash	\$200.00	\$253.30	(\$53.30)	(21.0)%
<b>Total Cash On Hand</b>	<b>\$160,135.97</b>	<b>\$101,386.08</b>	<b>\$58,749.89</b>	<b>57.9%</b>
<b>Total Current Assets</b>	<b>\$160,135.97</b>	<b>\$101,386.08</b>	<b>\$58,749.89</b>	<b>57.9%</b>
<b>Total Assets</b>	<b>\$160,135.97</b>	<b>\$101,386.08</b>	<b>\$58,749.89</b>	<b>57.9%</b>
<b>Liabilities</b>				
<b>Current Liabilities</b>				
Trade Creditors	\$7,263.00	\$145.00	\$7,118.00	4,909.0%
<b>GST Liabilities</b>				
GST Collected	\$0.00	\$2,424.48	(\$2,424.48)	(100.0)%
GST Paid	\$0.00	(\$1,208.15)	\$1,208.15	100.0%
<b>Total GST Liabilities</b>	<b>\$0.00</b>	<b>\$1,216.33</b>	<b>(\$1,216.33)</b>	<b>(100.0)%</b>
<b>Payroll Liabilities</b>				
Superannuation Payable	\$0.00	\$1,796.64	(\$1,796.64)	(100.0)%
<b>Total Payroll Liabilities</b>	<b>\$0.00</b>	<b>\$1,796.64</b>	<b>(\$1,796.64)</b>	<b>(100.0)%</b>
Grants in Advance 2019	\$5,735.75	\$18,955.06	(\$13,219.31)	(69.7)%
Grants In Advance 2020	\$20,957.61	\$0.00	\$20,957.61	NA
<b>Total Current Liabilities</b>	<b>\$33,956.36</b>	<b>\$22,113.03</b>	<b>\$11,843.33</b>	<b>53.6%</b>
<b>Total Liabilities</b>	<b>\$33,956.36</b>	<b>\$22,113.03</b>	<b>\$11,843.33</b>	<b>53.6%</b>
<b>Net Assets</b>	<b>\$126,179.61</b>	<b>\$79,273.05</b>	<b>\$46,906.56</b>	<b>59.2%</b>
<b>Equity</b>				
Retained Earnings	\$79,273.05	\$87,896.00	(\$8,622.95)	(9.8)%
Current Year Surplus/Deficit	\$46,906.56	(\$8,622.95)	\$55,529.51	644.0%
<b>Total Equity</b>	<b>\$126,179.61</b>	<b>\$79,273.05</b>	<b>\$46,906.56</b>	<b>59.2%</b>

This report includes Year-End Adjustments.

At the end of the day whether it be zooming, making a call, sending a text, going for a walk with or making a meal for someone, it's the connecting and connection that is so important.

It's vital and that is what I believe Community Houses do best.

TORQUAY COMMUNITY HOUSE



## NEIGHBOURHOOD HOUSES BARWON

45 Heyers Road, Grovedale 3216

Phone: 03 5241 4810

Email: [info@nhbarwon.org.au](mailto:info@nhbarwon.org.au)

[www.nhbarwon.org.au](http://www.nhbarwon.org.au)

 [facebook.com/NHBarwon](https://facebook.com/NHBarwon)