

NEIGHBOURHOOD HOUSES BARWON
ANNUAL REPORT
2023



NEIGHBOURHOOD
HOUSES BARWON



**BUILDING COMMUNITIES
AND STRONGER GOVERNANCE**



Vision

Community development principles and practice delivered with a sense of unity and a collective voice.

Mission

Enabling the delivery of quality community development through high level representation, advice, guidance and support.

Purpose

Neighbourhood Houses Barwon Inc will provide “a collective voice and a sense of unity” for its members.

Priorities

- Sharing resources, information and knowledge
- Linking members with each other and our community partners
- Community development
- Conversations- positive and productive
- Advocacy



Neighbourhood Houses Barwon acknowledges the Traditional Owners and Custodians of the land on which 24 Neighbourhood Houses connect with their communities – the land of the Waddawurrung, Eastern Maar, Gulidjan and Gadubanud people – and pays respects to Elders, past, present and emerging. Neighbourhood Houses Barwon acknowledges and pays respect to the First Nation's people and the continuation of cultural, spiritual and education practices. We value and include people of all cultures, languages, abilities, sexual orientations, gender identities, gender expressions and intersex status. We are committed to providing programs that are fully inclusive. We are committed to the safety and wellbeing of people of all ages, particularly children.



Contents

Our Members	4
NHBarwon Joint Chair and Networker Report	6
Community Development Coordinator's Report	8
Know Your Neighbourhood Project	9
Reconciliation Action Plan	10
Barwon Governance Initiative Project	13
Our Partners	14
City of Greater Geelong	14
Colac Otway Shire	14
Department of Families, Fairness and Housing	15
Neighbourhood Houses in Barwon	16
Anakie Community House	18
Anglesea Community House	19
Bellarine Living and Learning Centre	20
Bellarine Training and Community Hub	21
Cloverdale Community Centre	22
Colac Neighbourhood House	23
Deans Marsh Community Cottage	24
Forrest District Neighbourhood House	25
Geelong West Neighbourhood House	26
Gellibrand Community House	27
Grovedale Neighbourhood House	28
Lara Community Centre	29
Leopold Community & Learning Centre	30
Lorne Community House	31
Marrar Woorn Neighbourhood House	32
Norlane Community Centre	33
Portarlington Neighbourhood House	34
Queenscliffe Neighbourhood House	35
Rosewall Community Centre	36
South Barwon Community Centre	37
SpringDale Neighbourhood Centre	38
Torquay Community House	39
Vines Road Community Centre	40
Winchelsea Community House	41
More photos from the Know your Neighbourhood Project	42
Treasurer's Report	44
Financial Reports	45

Our Members





NHBarwon Joint Chair and Networker Report

On behalf of the executive committee of Neighbourhood Houses Barwon (NHBarwon), we are pleased to present the annual report for 2022-23. It's been another fast-paced year for the Network.

This year's annual report and annual general meeting (AGM) theme is Building Communities and Stronger Governance because this is exactly what neighbourhood houses and NHBarwon have been so busy doing over the past 12 months!

As neighbourhood houses continue to reconnect and support their local communities, the impact of increasing compliance requirements, increasing operational costs and relatively static funding has stretched our budgets and highlighted the need to consciously attend to the health and wellbeing needs of everyone involved in this sector.

Our research indicates that more than a third of house coordinators left their paid positions in 2022 and many key committee members and critical volunteers stepped away from long held roles. In 2022/23, the sector has continued to meet the requirements of many funding bodies. For those registered as incorporated associations and charities, compliance has become more complex and highlights the need for ongoing and consistent information, induction and training as new committees and coordinators join the sector.

Key issues tackled by NHBarwon have included supporting houses to fully implement the Child Safe Standards, ensure that house constitutions are compliant with the Australian Charities and Not-for-profits Commission (ACNC) requirements and a multitude of obligations linked to being an employer and facilitator of volunteers and creating an inclusive, safe and welcoming environment for all.

Houses have continued to demonstrate their patience and persistence as they collaborate and work hard to meet these new requirements while being at front and centre in their communities. We are proud that NHBarwon has been able to support houses in delivering their day-to-day community development, compliance and governance activities as well as taking up leadership for the once-in-a-lifetime referendum

seeking to establish an Aboriginal voice to parliament through changes to our constitution. We acknowledge the continuing efforts of our Reconciliation Action Plan (RAP) working group, coordinated by Jodie Flood, and the committed and creative people from the sector progressing this important work.

The Network has continued to work collaboratively with the Department of Families, Fairness and Housing (DFFH), Department of Jobs, Skills, Industry and Regions (DJSIR), City of Greater Geelong, Borough of Queenscliffe, Surfcoast Shire and Colac Otway Shire, the Gordon, Volunteering Geelong and Give Where You Live to strengthen the investment, resources and outcomes for our Houses.

We commenced the 2022/23 year with Amy Hunter in the Networker role and then welcomed Fiona Reidy while Amy Hunter went on leave. It's been wonderful to work with Fiona has brought a clear and strategic lens and some new and exciting governance resources to the Network that will be launched at the 2022/23 AGM when we will also be launching the Know Your Neighbourhood House project delivered by Anthea Warland in her continuing Community Development Coordinator role. We have recently secured funding for a digital mentors initiative, and welcome Tony Phelps in leading this initiative in the coming 12 months.

Our renewed website, Friday Fortnightly e-newsletter and coordination of network of community houses (NOCH) meetings and coordinator gatherings are a vital way to keep two-way communication, connection and support going within our sector.

We are also pleased to acknowledge the work of five new volunteer governance mentors who are able to assist houses on governance issues. Austin Patterson, Jill Evans, Beth Davidson, Marg White and Jenny Speed have worked alongside the NHBarwon Chair and together we form an experienced team who are committed to the sector and passionate about good governance. We consider it the foundation for having happy and healthy staff and volunteers as well as maintaining a vibrant and engaged Neighbourhood House.

Amy Hunter will be returning to the Networker role early 2024 so we will farewell Fiona Reidy and thank her for her wonderful contribution to the Network. I am extremely proud and appreciative of the staff and volunteers at NHBarwon, and the 2022-23 executive committee members and the wonderful progress we have made together in this past 12 months.

We are looking forward to 2024 when the Network will be developing its next strategic plan. We will be consulting widely to ensure we capture the interests and intentions of our members and their communities, as well as our key stakeholders across Barwon.

At the AGM, a new Chair and Committee will be elected, and I wish them all the best for the coming 12 months as they work to support and resource the amazing group of 24 houses that form NHBarwon.

Deb Kearney
Chair

Fiona Reidy
Networker



Community Development Coordinator's Report

At NHBarwon the Community Development Coordinator is **best known** for keeping everyone updated and connected through our online newsletter and website. After launching the Wednesday Weekly and Friday Fortnightly initiatives in 2022-2023, I was inspired to raise our storytelling game and enhance the way we share and promote the incredible work happening in our region with the **"Know Your Neighbourhood Project."**

The **"Know Your Neighbourhood Project"** aims to promote our Neighbourhood Houses and highlight the importance and value of our incredible NH's communities through showcasing our volunteers, staff, and community members that drive our sector via short videos and still photography. I hope these stories can resonate emotionally with you all and create new opportunities to drive further partnerships, funding, and wider community engagement—a pathway for positive change.

Our stories have the potential to connect our collective experiences, reach new audiences and offer a glimpse into the lasting impact we make in our communities. By boosting the visibility of Neighbourhood Houses and personalising our narratives, we can deepen our engagement, motivate further involvement and can spark curiosity about the important social issues we address on daily basis.

After putting out an expression of interest in early 2023 we were happy to offer this incredible opportunity to; **Forrest and District Neighbourhood House, Norlane Community Centre, Geelong West Neighbourhood House, Torquay Community House, Deans Marsh Cottage** and highlight the important work that happens via our **NHB Executive Committee**.

By boosting the visibility of Neighbourhood Houses and personalising our narratives, we can deepen our engagement.

On behalf of everyone at NHB I would like to thank Andy Forssman from Roseneath Creative and all the wonderful coordinators, staff, volunteers and community members that contributed their time and their stories to the project!

Other highlights this year include being part of the NH Barwon RAP working group, I personally enjoyed working on increasing the amount of First Nations content we deliver via our website and newsletters and being able to share important network resources and raise awareness through factual information about the 2023 referendum. As a group, we want to find better ways to connect and inspire our houses to get more involved to drive positive change and growth in our reconciliation space.

It's been a pleasure working with everyone across the network this year as always and I would like to personally acknowledge and thank Deb and the entire executive committee and Fiona for all their support this year- what a team!

Anthea Warlond
Community Development Coordinator





Know Your Neighbourhood Project

Reconciliation Action Plan

NH Barwon acknowledges the traditional owners and custodians of the lands of the Gulidjan, Gadubanud, and Wadawurrung peoples on which the region's Neighbourhood Houses are located.

NH Barwon launched its Reflect Reconciliation Action Plan (RAP) at the 2022 Annual General Meeting last October. The launch featured a Welcome to Country, Didgeridoo performance, and unveiling of a commissioned artwork by Billy-Jay O'Toole. A Reflect RAP is the first step of an ongoing journey for organisations and is all about listening and learning. In this first RAP year, NH Barwon has highlighted the great work across the sector in sharing First Nations culture and knowledge, and in building local relationships that are embedded in respect and inclusion through social media and the regular newsletters. We have provided advice to Houses in engaging with First Nations communities, reviewed internal policies, assessed training needs, and are establishing a recommended supplier directory of First Nations-led businesses in the region.

A particular focus of the RAP Working Group has been to share knowledge and work with Houses in the lead-up to the First Nations' Voice to Parliament referendum. Neighbourhood Houses are a trusted source of information and many Houses ran dialogues,

information sessions, and provided resources for their communities. Neighbourhood Houses Barwon endorsed its 'Yes' position on the referendum at its June meeting. The outcome of the referendum is, at the time of writing, unknown but will have been decided by the time you read this Report. Outcome aside, the Referendum campaign has highlighted there is still much work to be done. The true history of this land is still far from known let alone acknowledged, and misinformation and harmful myths about what it means to be Indigenous in modern Australia still permeate.

A focus for the year ahead will be looking at more ways to build sector confidence and capability through immersive and thorough Cultural Awareness training.

Thank you to the First Nations' community members and organisations who have worked with NH Barwon and its members in advancing reconciliation this year. I would also like to acknowledge and thank the members of the RAP Working Group this year – Fiona Reidy, Anthea Warlond, Prue Challis, Kyla Beale, Jenny Speed, and Anne Brackley.

Jodie Flood RAP

Working Group convener Manager
Rosewall Community Centre

A Reflect RAP is the first step of an ongoing journey for organisations and is all about listening and learning.



Above: Norlane Community Centre

Below: Torquay Community House



Barwon Governance Initiative Project

The Barwon Governance Initiative Project commenced in 2021/22 in collaboration with member houses, the Department of Families, Fairness and Housing (DFFH) and the Cities of Geelong, Surfcoast and Colac Otway and has continued to develop in 2022/23.

Since the last annual report, the project has delivered and worked to interconnect three mutually reinforcing activities including:

- Development, delivery and evaluation of a governance induction program for new and experienced neighbourhood house committee members;
- Co-design of the priorities and format of a community of practice for neighbourhood house chairs; and
- Establishment and matching of a bank of volunteer governance mentors to support NHBarwon members to prevent or respond to specific governance issues.

These three activities effectively form a model of governance support and reflect the need for continuity of knowledge and resources to support volunteer committees of management and funded coordinators at a time when compliance requirements are increasing.

Compliance expectations apply to neighbourhood houses variously as recipients of government funds, incorporated associations, registered charities, not-for-profit organisations and employers. The responsibility for compliance sits with volunteer committees of management and their office bearers or the relevant auspice organisation.

The project has delivered and worked to interconnect three mutually reinforcing activities.

As a result, NHBarwon has applied remaining grant funds to developing a Governance Induction Resources Workbook to provide consistent and accurate:

- Induction to the neighbourhood house sector, the community development model that has always driven local houses and the roles and responsibilities of members, committee members, office bearers and staff;
- Governance and compliance requirements from funders and regulators; and
- Resources to support committees to manage:
 - An effective committee of management.
 - Strategic, operational and risk management.
 - Community engagement.
 - Staff and volunteers.
 - Shared or lease facilities.
 - Events.

These resources, along with a strategic and financial planning calendar for 2024, will be launched at the Annual General Meeting in November 2023. They will be available for use in future governance induction training, community of practice sessions and in mentoring and network support activities in the future.

We are grateful for the ongoing work of the Barwon Governance Initiative Project Advisory Group that has met 6 weekly throughout the year to guide the project, the volunteer mentors who have been supporting houses, Jill Evans for delivering the governance induction training and Ann Horsley who evaluated the training and made recommendations that will be implemented in 2023/24.

Fiona Reidy
Networker

Our Partners

City of Greater Geelong



The City of Greater Geelong has witnessed another year of strength, resilience, and innovation from Neighbourhood House (NH) coordinators navigating their way through new community norms and needs in the COVID recovery period. With a 'can do' attitude and profound passion to make our community a place where everyone can participate and thrive, coordinators go above and beyond to implement programs, services and supports.

The City proudly supports these efforts through its annual funding streams, including the Neighbourhood House Grants Program, the Healthy and Connected Communities Grants Program, the Arts Project Grants Program and the Christmas in the Community Grants Program. With the total funding allocation of \$ 265,000 in the 2022/23 financial year Neighbourhood House coordinators implemented new projects, programs and events to ensure that community needs are progressively assessed and responded to.

Examples of this year's programs/projects include:

The 'Keep Connected Project' at the Geelong West Neighbourhood House providing a space for elderly and frail adults and their carers to combat social isolation by building connection, support and ongoing friendships.

Establishment of a peer based mental health and wellbeing team at the Norlane Community Centre that provides community members in need of assistance with one-on-one support and connections to local community services.

The 'Becoming Fit and Fabulous' exercise program for senior aiming to increase confidence and overall quality by improving endurance, strength, balance and flexibility at the Leopold Community Centre.

Community connection, support and wellbeing were at the forefront of these efforts and are continuing to create positive impact to people from all walks of life. The city recognises and celebrates those efforts with special acknowledgement to all the wonderful opportunities provided for people in our community facing disadvantage.

We are committed to further strengthen these supports and are excited to work with Neighbourhood Coordinators and Neighbourhood Houses Barwon for continuing community development based on principles of equity, compassion, and empowerment.

Lena Talihmanidis

Senior Community Development Project Officer

Ruth Cuttler

Team Leader Community Inclusion

Colac Otway Shire



The Colac Otway Shire Council is fortunate to have four wonderful Neighbourhood Houses in our municipality, located at Colac, Apollo Bay, Forrest and Gellibrand. Council supports our local Neighbourhood Houses, as well as the Barwon Region, via an annual grant which recognises the important community development and capacity building work they do.

Our Neighbourhood Houses are trusted and respected in their communities as sources of information, training and development, social connection and support. During the reporting period we were thrilled to join the Gellibrand Community House and the wider community for the official opening of the

new office in the Gellibrand Hall, which was a great partnership between Council, the Community House, and the Gellibrand Hall committee and trustees.

We thank our local Neighbourhood Houses for their ongoing work making our communities more inclusive, resilient and connected.

Tamzin McLennan

Manager Connected Communities



Over the past 12 months, Surf Coast Shire Council has continued to enhance our strong relationships with our five Community House partners located in Anglesea, Deans Marsh, Lorne, Torquay and Winchelsea, to support their delivery of activities, programs, services and events that respond to the emerging needs of the community, create welcoming, safe and inclusive spaces for participation and work to enhance social connection and sense of belonging between individuals and groups.

Key activities delivered over the past year in partnership with Council across the Community Houses include:

- Mental Health Month – initiatives included exam balance for VCE students, art therapy, chatty café and still life art
- 16 Days of Activism – social media campaign, launch of 'Respect Is' resource libraries for community and awareness raising morning teas
- International Women's Day – events held across Community Houses to celebrate International

Women's Day and our local women creatives

- Responsible Service Of Alcohol courses – over 140 community members received RSA certification (free of charge)
- Community Lunches – free lunches for community members once per month as a way of bringing people together, reducing social isolation and building connections between community and the Community House
- National Volunteer Week – hosted 7 events across our Community Houses to celebrate our amazing community volunteers, morning tea and opportunity to connect with Councillors to recognise the hard work and thank our volunteers for all of their contributions to the community

Monika Stevanja
Health and Wellbeing Advisor

Department of Families, Fairness and Housing



After taking over as the Department of Families Fairness and Housing (DFFH) Neighbourhood House portfolio holder, I have been so impressed by the range of programs offered by the 24 houses across the Barwon Area. While each house has its own unique operation model, the passion and commitment to creating inclusive and vibrant communities is obvious among all the managers and volunteers.

In the short time I have been here, I have seen the Barwon Neighbourhood Houses Network be state leaders in governance through the drafting of a governance induction resource kit and induction training. I have had the opportunity to visit a variety of Neighbourhood Houses across Barwon and I look forward to visiting many more in the future. Our new Barwon Area, Executive Director, Linda Gertz, has made a commitment to learning about

the community strengths and needs through the lens of the community houses. She wants to foster the existing strong partnerships between DFFH and the Neighbourhood Houses by meeting the people delivering the services. Linda has met with her first of many Neighbourhood Houses, Rosewall Community Centre, and was impressed by the diverse mix of education, creative and wellbeing programs and services on offer.

DFFH looks forward to continuing to work alongside Neighbourhood Houses to provide the pro-social support and preventative eco-system required for supporting DFFH clients and the wider community.

Megan Hanna
Senior Adviser | Community Partnerships Team

Neighbourhood Houses in Barwon

Real Impact. Real Value.

income

\$6 Million



=

value

\$24 Million



This figure includes the value of:

\$9.8m

Improved quality of life through social connection



\$3.8m

Volunteer contributions



\$1m

Emergency Relief Provided



\$3m

Services



\$6.4m

Adult Community Education



\$289k

Early childhood education and care



\$128k

Social enterprise goods & services:



This community value equates to: **\$4.04** for every \$1 of income **\$10.70** for every **\$1** of Neighbourhood House Coordination Program funding.

Emergency relief value includes:

\$976k

Food and Groceries



\$43k

Food Vouchers



\$3k

Cash/prepaid or gift card



\$5k

Clothing



\$6k

Personal care and hygiene items



Service value includes:

\$1.2m

Facilities use or hire



\$623k

Fee for service activities



\$380k

Community Lunch, frozen or other meals



\$663k

Power Saving Bonus



\$30k

Auspicing other organisations



\$19k

Computer/Internet usage



These values are produced by Neighbourhood Houses Victoria based on data provided by Neighbourhood Houses in Barwon in the 2022 Neighbourhood Houses Survey.



Anakie Community House

Anakie Community House

At Anakie Community House we are best known for our welcoming manner. From the first visit, a happy smile will greet you.

This year, we have had a few 'eat and meet' days. A nice lunch precedes some fun activities, where everyone is paired up with a buddy. We have been finding out where people originated, what brought them to Anakie and what their interests are.

We had a Whist Drive evening in May and will have another in November, due to requests.

The usual activities continue, with our annual Community Day planned for Saturday 14 October. All local organisations are invited to join us in the carpark for a day of interaction and fun for all ages. We welcome people from everywhere; there are stalls of goodies, a morning tea; barbecue lunch and free jumping slide for the children.

You will never need to be lonely or bored in Anakie; the community house is ready to welcome you.

It is not necessary to join a class or activity at Anakie Community House – we always welcome people to call in simply to say hello and have a cuppa.



Anakie Primary School - located beside Anakie Community House. Circa mid 1920s.



Playing Whist on a Saturday evening at Anakie was a whole lot of fun.



Playgroups are fun for the kids
– different toys to play with;
friends to meet and space to play.
Parents can sit back and socialize.

Anglesea Community House

At Anglesea Community House we are known for our commitment to sustainability and community connection. We have amazing community members who are motivated about the environment. We were extremely fortunate to have ewater systems donate a \$10,000 unit to us that produces toxic chemical free cleaner, disinfectant, and sanitiser, using salt water and scientific process. ewater are committed to reducing toxic chemicals while making it affordable and accessible. We appreciate the number of community members who come in to purchase bottles and return to refill their ewater bottles. So far we have produced nearly 1000 litres of product.

Our house continues to see all ages of people come through from newborns attending with their parents at our new parents group to our older community members attending bingo, talking points and our sewing for a purpose group where our oldest sewer is 92. Our sewing for a purpose group has produced over 2000 items which have been donated back to community, from shopping bags, make up wipes, bibs and face washers just to name a few.

We pride ourselves on our accessibility especially with all the groups that volunteer at our award-winning resale shed.



Bellarine Living and Learning Centre



Here at Bellarine Living and Learning Centre we are known for our warm and welcoming space where the community can come and be listened to and supported.

Our Foodbank program is the pivotal point of the week where community members can come together not just to choose food and other goods that they need but also to socialise over coffee and cake. BLLC works with many partners to make its programs happen including in the food relief sector and the Grinter Community Garden. We endeavour to develop programs and activities based on ongoing conversations and consultation with our Centre participants.

We have a wonderful team of volunteers who are dedicated to giving to the community and provide energy and life to the Centre.

Our Learn Local courses are providing a pathway to gaining confidence and connecting with others as well as employment. The pop-up cafes provide a fun opportunity for the Barista students to make coffee for community members and staff.

We have a large group of creative people in our community who enjoy all the craft activities and events we hold.

BLLC has created the first iteration of a community directory for the 3219 area, with contributions from services and businesses in the area. These 2000 copies will be distributed in the area with the hope that interest will grow and there will be sufficient funds to do a regular directory.

We are dedicated to continuing to work with the 3219 community over the next year.



Bellarine Training and Community Hub



Bellarine Training and Community Hub (BTACH) is best known for delivering community-based programs, accredited training courses and youth based programs to the community of Ocean Grove and the wider Bellarine Peninsula

2023 has delivered a strong community return with significant increases in participation in community-based programs in areas like health and well-being, art, languages and many other general interest community initiated courses. There has been a significant increase in the variety of youth based programs with over 90 young people attending the various programs each week.

There has been a significant push to increase partnerships with external service providers to offer more community support programs and also to bring services to the centre to improve accessibility for the local community and a drive for the local community to deliver their own community interest programs. As our mission states 'We engage and support our community to connect, learn and grow.'



There has been a significant increase in the variety of youth based programs with over 90 young people attending the various programs each week.

Cloverdale Community Centre



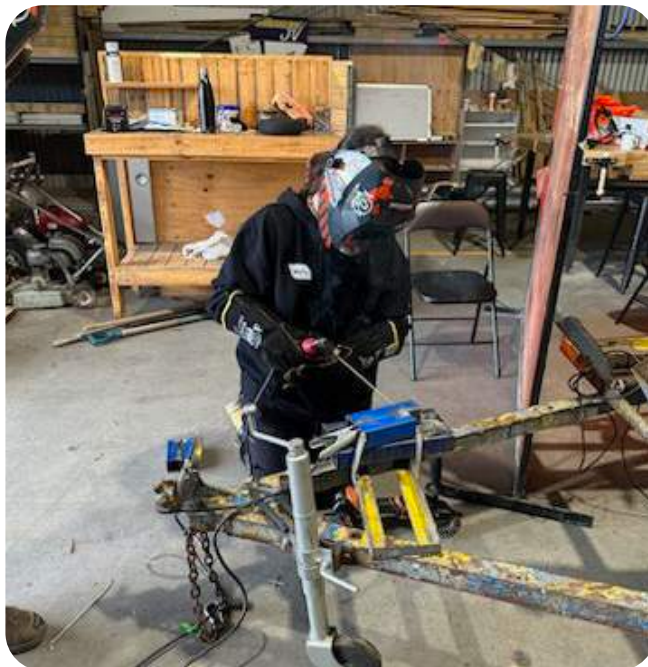
At Cloverdale Community Centre we are best known for our friendly, inclusive approach to community development and our Lotus Kitchen Thai meals, catering and cooking programs.

Wellbeing is at the heart of everything we do, and we rely on a team of specialist tertiary students on placement and volunteers to make it happen. As a result, we've never been busier.

We are also growing our reputation as a place for hands-on learning, especially at our trade training site in North Geelong. Through our ACFE-funded programs we provide introductory courses to a range of industries.

The past year has again presented new challenges as our community increasingly turns to us as a starting point for support and referral to other services. Whether it's food or housing, access to affordable activities and education, we aim to help remove barriers.

Our partnerships with other community organisations are important to everything we do, and it's been another year of consolidating and developing those relationships. We're always looking forward as an organisation and are excited about what the next 12 months might bring.



Colac Neighbourhood House



At the Colac Neighbourhood house are best known for our safe and welcoming spaces where people can thrive, learn, connect and enjoy our programs and activities.

This year we have enjoyed another wonderful year filled with new programs, new members and fabulous community and social connections.

Our partnerships with agencies supporting the most vulnerable in our community a stand out and without the generosity of volunteers, funding from grants and Colac Area health our auspice agency we could not have done it all.

Welcoming new migrants to our Conversational English has seen people from at least 12 different cultures enjoy learning our language and its complexities together with forming new friendships reducing the longing for home.

Supporting the community with our Fill it up Mate program providing nonperishable food items and vouchers wholly donated by the people of Colac and some wonderful businesses has been extraordinary and humbling in the response.

The Thursday quilters who so generously give of their time and expertise, sewing handmade quilts and blankets have donated up to 100 quilts to help people keep warm and we are so very grateful for the gifts they give.

So proud to be a part of the Neighbourhood House and we look forward to many more years together.



TOP LEFT: Cake decorating

TOP RIGHT: School holiday program

BOTTOM LEFT: Cultura Homework club
Harmony Day celebrations

Deans Marsh Community Cottage



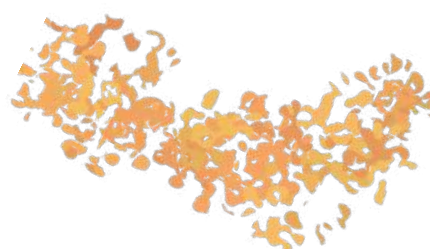
At Deans Marsh Community Cottage we are best known for the abundance of activities and events we host that enable our community to create and strengthen meaningful connections.

Our new Community Dinners were a highlight of the year. Led by passionate committee member Jo Zdybel, this program created a monthly opportunity in which over 100 community members came together to prepare food, set tables, serve, dine, and connect: whether contributing volunteer hours in return for a meal, or as a paying community customer. This ongoing program has brought together members from all demographics, even extending to the newly developed Youth Group, who make and serve desserts as a fundraising activity on a rotating basis.



Supporting the Youth Group to flourish has also been a highlight for this past year. Over 24 active youth have come together on a regular basis to catch up, play games, fundraise at community events, and share unique experiences including a self-funded visit to Adventure Park.

In addition to these two highlights, the Cottage has helped to create and support volunteer led groups for History Chats, Bushwalking, Book Club, and Playgroup, as well as coordinated a Festival, Winter Solstice, Fun Run, Music Concerts, Markets, Weekly Health and Wellbeing Classes, School Holiday activities, Art workshops; and has become a welcoming drop-in space that supports carers, the community life admin needs and fosters community connection.



Forrest District Neighbourhood House



At Forrest & District Neighbourhood House we are best known for being the heart of our small rural community. We are a bit of a one stop shop where you can get almost anything you might require! Get your printing done, use a computer, borrow a book, find a new outfit in the clothes swap, go to the gym, top up from the foodshare, have a chat, meet new people, join a group and so much more.

We are also known for our weekly community lunch that has been running for over 15 years and provides a delicious 2-course, homemade meal to around 40 people each week! We offer dine in and take away option and use a reusable, returnable container system to reduce the amount of waste each week.



Geelong West Neighbourhood House



At Geelong West Neighbourhood House, we are best known for our community spirit, welcoming atmosphere and friendly tutors.

This year we embarked on a renovation that essentially turned our building from a hall and small attached side room to a 2 room House. This has increased the number of classes we could offer at the same time thanks to funding from State Government and CoGG. We have seen an increased interest in our classes and have been able to offer some new classes. We are also offering community information sessions such as Healthy Ageing Talks and hearing checks. We also have lots of new community groups using our building so we are busy 7 days a week day and night. We also participated in the Know Your Neighbourhood House Project with Barwon Network, Pako Festival and held a fundraiser for the Biggest Morning Tea where we raised over \$700.



Gellibrand Community House



At The Gellibrand Community House, we are best known for being the smallest house in the network. However, this is changing with the recent move to the local Gellibrand Public Hall. Since the opening of our new office in February 2023, the house has seen so much support from their community, it has blown us away. New programs and events have been made possible with the new larger facility. This new energy has attracted much needed funds through grants to upgrade the hall, working with the hall committee and other town committees, we have been able to install new heating, new chairs, a large screen, solar panels and \$50k from the Victorian State Government that will help the old Hall meet the needs of this modern world.

Supporting our area to be resilient and connected with the challenging times ahead is paramount to us as a Community Hub here in the middle of the bush. We have big dreams and look forward to running more programs and events to engage more with our wonderful Community here in the middle of the Otways, Southwest Victoria.



Since the opening of our new office in February 2023, the house has seen so much support from their community, it has blown us away. New programs and events have been made possible with the new larger facility.



Grovedale Neighbourhood House



At Grovedale Neighbourhood House we are best known for our fabulous Ukelele Group, Ukés 'n' More and the variety of spaces we have available for hire, offering our community affordable spaces to connect, learn and participate locally. Our Ukés 'n' More group meet weekly on a Wednesday during school term. The group averages 50 participants all excited to learn and share their love of music and song in a relaxed and fun environment.

Over the last 12 months we have worked with the Grovedale community to design our new Strategic Plan through the Shaping Your Neighbourhood community engagement project. The plan sets out Grovedale Neighbourhood House objectives over the

next 5 years and centres around the key result areas of Place, Profile, People, Programs, Partnerships and Processes & Practices.

We were excited to receive funding to deliver come-and-try programs through our 'Taster Series'. So far our community has embraced the opportunity to try Macrame and Tai Chi at a heavily discounted fee for participants. We look forward to offering more Taster activities in 2024.

Both the 'Shaping Your Neighbourhood' and 'Taster Series' projects were made possible thanks to funding received from the City of Greater Geelong Neighbourhood House Grant Program.



Macrame Gelato Hanging Pot Workshop



Over the last 12 months we have worked with the Grovedale community to design our new Strategic Plan through the Shaping Your Neighbourhood community engagement project.

Lara Community Centre



Lara Community Centre is best known for.....

The past twelve months have been challenging In Lara.

Staffing issues in our childcare have continued to plague us, but the service is very valuable to the community, so we have persisted. We have now been able to secure a flexible workforce to fill the rosters. Fingers crossed.

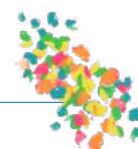
Processing claims for the Power Saving Bonus has brought community members into the Centre who had never been come in, and they continue to come back to see us for a variety of reasons. This has been a lovely bi-product of the program that we hope continues to seep through the community as people recommend us to others who need assistance in some way.

We have been fortunate to have a number of programs running in the centre with other organisations including physio-guided exercising for older members of the community, and cooking sessions for people with health concerns or living alone. The only down side is that the centre smells really yummy and makes us hungry too!

Early in the year we were approached by someone who wanted to establish a Big Band. We had a better idea though. We now work in collaboration with the group providing space, advertising and other support as needed and the group is flourishing.



We have been fortunate to have a number of programs running in the centre with other organisations including physio-guided exercising for older members of the community, and cooking sessions for people with health concerns or living alone.



Leopold Community & Learning Centre



Leopold Community & Learning Centre

At Leopold Community & Learning Centre we are best known for providing a warm and inviting place for the community to meet, learn and connect. We offer a wide variety of activities and workshops including 'Becoming Fit and Fabulous' and 'Living Healthy and Well'.

This year saw the establishment of our 'Sing out Strong' community choir which has grown from humble beginnings to now boast 33 harmonious voices. Also new to the Centre is our Table Tennis Group, the sound that emanates from this group isn't quite as musical but much laughter can be heard from the group aptly named 'Hit and Miss'.

It was a pleasure to support 'Off your Back' winter coat collection drive for the homeless by being a drop off point and over 100 coats were donated from the community.

Chatty Café' has gone from strength to strength and operates on a Monday and Wednesday morning. It is the perfect way for strangers to connect with others in the community. We are so grateful to the volunteers who help run the Café and make it a welcoming place to visit and also to the City of Greater Geelong and Community Bank Leopold for their support of our various programs.



This year saw the establishment of our 'Sing out Strong' community choir which has grown from humble beginnings to now boast 33 harmonious voices.



Lorne Community House



At Lorne Community House we are best known for providing a range of activities to suit babies through to centenarians, we try to have something for everyone. Playgroup, childcare and toy library for the little people, games group, morning teas and guest speakers for the older people, and activities for everyone in between.

2022 saw one of our main activities, childcare, close temporarily due to the inability to recruit staff. Thankfully for most of 2023 we have had educators and have been able to provide this important service for our community. Securing Early Years Educators is challenging across Australia however being in a small township amplifies this challenge. The support from other House Coordinators has again been greatly appreciated this year.



Marrar Woorn Neighbourhood House



At Marrar Woorn Neighbourhood House we are best known as a central point for community activities. Exciting new initiatives in our house this year include a men's circle, a writers group, monthly 'mind your groove' dance group, an open arts studio, toy library and a youth art group. We've also enhanced our house by making it a shower and power site, available for anyone.

One of the most exciting ways we've supported our community is by creating a food share pantry. This outdoor, free access pantry that contains food which is accessible 24 hours a day, seven days a week, require no appointments and no questions asked. The main aims are to avoid food and goods going into landfill and to help feed our community.

We feel the Neighbourhood House is thriving and hope to continue on our set route in 2023/2024!



Located at the entrance
near the Library.

Marrar Woorn
Neighbourhood House
6 Pengilly Ave

Apollo Bay FOOD SHARE PANTRY

The pantry gets re-filled Wednesday,
Thursday, Friday, 5pm

This is an outdoor, free access pantry that contains food which is accessible 24 hours a day, seven days a week, no questions asked. The main aims are to avoid food and goods going into landfill and to help feed our community.

Our philosophy is give what you can, take what you need. We thank the various local businesses that help keep the pantry full.

Would you like to contribute? You can donate anything going unused in your pantry (no open packets), excess produce from your garden, or household items such as toiletries and nappies.

The Food Share Pantry is volunteer run.
Email coordinator@mwnh.org to get involved!



This outdoor, free access pantry that contains food which is accessible 24 hours a day, seven days a week, require no appointments and no questions asked.

Norlane Community Centre



At Norlane Community Centre we are best known for our friendly and welcoming atmosphere. Our staff and volunteers are happy to sit down and have a chat and a cuppa with all who come.

Our centre hosts a range of activities, such as community gardens, mosaics, art, craft, Tai Chi and ballroom dancing as well as services like food and clothes share, book swap and our Treasures op shop provides low-cost second-hand items to Norlane residents.

Our focus has been talking with community about the resources that are important. Including food equity, material aid, digital inclusion and social connection and we have aligned our strategic plan to address these.

Norlane holds events including the Australia's Biggest Morning Tea (raising over \$300 for the Cancer Council), Pancake Day, Solstice celebrations and Garden Barbecues. We are now developing projects for the Environmental Sustainability and the Healthy and Connected Communities grants.



Our focus has been talking with community about the resources that are important. Including food equity, material aid, digital inclusion and social connection and we have aligned our strategic plan to address these



Portarlington Neighbourhood House



At Portarlington Neighbourhood House we are known for our wonderful volunteers.

We are incredibly fortunate to have such an enthusiastic and involved volunteer base who provide fantastic services for our community. More than 70 volunteers share their skills and donate their time towards everything from facilitating activities, office duties, fundraising, organising and overseeing events, maintenance and gardening duties to committee responsibilities and community assistance.

Office volunteers also help people with tasks such as applying for Power Savings Bonus payments, disability parking permits, and providing local insight and advice to all who walk through our door. Our Tech Help is a local volunteer, and our Repair Shop is resourced by volunteers who provide tools, time, and expertise to repair broken items (and reduce waste) which benefits the environment and the community.

In addition to our approximately 50 weekly regular activities, we offer more than 20 workshops, events, excursions and concerts each year – all of which are volunteer led and run. Our diverse membership ensures there are a range of events on offer, from music concerts, garden visits, market days, art exhibitions, bus trips, nature walks and more.

Over and above this, the warmth offered by our volunteers is invaluable. Helpful, friendly, smiling faces provide a welcoming experience to all, whether they are a regular familiar attendee or a one-off visitor. Without them there is no Portarlington Neighbourhood House, our volunteers are our biggest asset.



We are incredibly fortunate to have such an enthusiastic and involved volunteer base who provide fantastic services for our community.



Queenscliffe Neighbourhood House



Queenscliffe Neighbourhood House is well-known for its efforts to promote an inclusive and lively community spirit. We offer a range of creative classes such as arts, crafts, language, and creative writing, as well as wellness activities that promote physical and mental well-being, including Pilates and chair yoga.

The community groups are thriving, with many new members joining the Men's Shed and Men's Shed bicycle group. We are also happy to celebrate the 20th anniversary of the Tides of Welcome Choir, a beloved and long-standing group. Shedding the Blues at QNH brings together men who share a love for music, promoting camaraderie and wellness through their musical pursuits in our supportive community. QNH welcomes individuals to gather and share their passions and interests while always being open to new groups at our Neighbourhood House.

Additionally, our school holiday program has been a resounding success, offering fun activities for families in the local area. We've hosted a range of exciting activities, including art workshops, eco crafts, beach walks, and a captivating science week workshop. We remain dedicated to fostering strong relationships within our neighbourhood and take pride in nurturing creativity and community spirit in Queenscliff and Point Lonsdale."



The community groups are thriving, with many new members joining the Men's Shed and Men's Shed bicycle group.

Rosewall Community Centre



At Rosewall Community Centre we are best known for our Art Studio and artist community, the delicious and low-cost meals at our Café, and the warm welcome everyone receives when they walk through the door.

This year, our programs had a strong focus on helping households mitigate the rising cost of living pressures. We delivered several money management courses, a series of 'Healthy Cooking on a Budget' courses in partnership with Geelong Food Relief Centre, and a free Clothes Swap. We developed new wellbeing programs, including a Family Yoga class, a knitting/crochet group, and an Art Journaling class.

Digital literacy was a focus for the year and we assisted hundreds of people to access their Power Saving Bonuses online. In March, we launched a new website that better reflects what happens at Rosewall. Growing our partnerships is integral to our ongoing strength and this year we became part of the Give Where You Live Community Choice meals program; delivered a Pathway to Volunteering program with Catholic Care; and welcomed a number of partner programs to the Centre.

We delivered several money management courses, a series of 'Healthy Cooking on a Budget' courses in partnership with Geelong Food Relief Centre, and a free Clothes Swap.



South Barwon Community Centre

South Barwon Community Centre



At South Barwon Community Centre we are best known for our ability to help people with technology. Rick, our Community Development Worker, runs various classes and one on one sessions. By the way, in December Rick celebrated 20 years as part of the SBCC community.

It has been an exciting year at South Barwon Community Centre. After 14 years of managing South Barwon Community Centre solo, Jan decided to share her knowledge and job of manager with Vanessa, who has been a friend of the Centre and member of the committee for a long time.

We have a number of fantastic volunteers who help run the Centre. They help on the committee, on reception, in our free puzzle library and fantastic garden which now provides fantastic produce for the community. Our Centre has a focus on sustainability and has a recycling station, works with Barwon Oil Barons who process olive oil and Boomerang Bags who work to reduce plastic pollution.

We help people in the community wherever possible. This year we have had the pleasure of two helpful Community Service students. We aim to assist the community wherever possible and we have done many Power Saving Bonuses.

We have a range of groups including: Scribes Writers, Relaxation and Meditation, art, craft, exercise groups, gardening, walking and 'Happy Snappers' photography. Throughout the year we have had a range of special celebrations for Christmas and Winter Solstice. If you go to 'South Barwon Community Centre' on Facebook you'll find the latest information of what is happening at the Centre.



SpringDale Neighbourhood Centre



At SpringDale Neighbourhood Centre we are best known for our award winning magazine, SpringDale Messenger, that helps keep our community connected and helps keep us moving forward, striving to meet needs on so many levels.

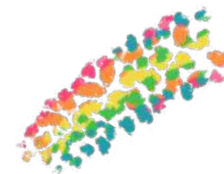
Our magazine is now delivered by an army of volunteers, who happily collect and distribute up to 17,000 copies each month. It is also available worldwide on our website and we also have a website that holds all our past issues for the last 32 years.

We are continuing to advocate for Women to be able to Live Well. We have helped a number of people to find accommodation but we still have some people, within our community, who are in desperate need of housing.

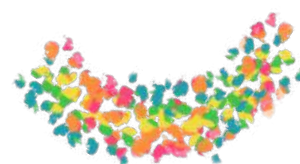
With more than 1,200 classes and 5,200 group sessions a year, 547 Power Saving Bonus applications, 71 Tax Help sessions, keeping more than 50 cubic metres of Books and other items out of landfill and finding them new homes – one might say “There is always something to do at SpringDale”.



Many people say that SpringDale is friendly and inviting. Our vision is: SpringDale Neighbourhood Centre – where ideas grow and people flourish. Our values are Approachability, Positivity, Fairness, and Innovation.



One might say “There is always something to do at SpringDale”.



Torquay Community House



At Torquay Community House we are best known for our collaborative approach to delivering programs. In 2023 we have worked closely with Surf Coast Secondary College to deliver key early years programs and provide opportunities for intergenerational connection. The 'With My Mates' and Women's Sharing Shed programs have proven highly successful in this regard.

Facilitating community connection is at the heart of all we do. Our free monthly Community Lunches have been very popular, and an opportunity to work with the students from Surf Coast Secondary College and partner with Feed Me Surf Coast, Surf Coast Shire and Rotary Torquay!

Our fabulous team of staff and volunteers make TCH such a vibrant and welcoming community space. We have much to celebrate as we approach 30 years in our current home on Price Street. Completed renovations and updated spaces allow us to offer more to our local community. We have some exciting projects in the pipeline, so watch this space!



Facilitating community connection
is at the heart of all we do.

Vines Road Community Centre



At Vines Road Community Centre we are best known for our modern and spacious rooms, including our huge Hall, that enables our community to enjoy a wide range of activities. The potential of our venue was demonstrated on mass in October last year when we held the 'Feeling Fine on Vines Happiness Festival' which was a huge, happy success. We followed this up with a successful 'Christmas in the Community' celebration. These highs were followed by a massive low in January when the vulnerability of the building was exposed and we lost half the Centre in a big storm and flood. After a long 5 months of rectification works, we reopened in May and slowly but surely Vines Road has been getting its mojo back! Please come visit us at VRCC, there is something for everyone.

Sally-Ann Muller
Centre Manager



Vines Road Community Centre Manager Sally-Ann Muller, Cr Peter Murrihy, Santa and Vines Road Community Centre Committee of Management President Stuart McLean

The potential of our venue was demonstrated on mass in October last year when we held the 'Feeling Fine on Vines Happiness Festival' which was a huge, happy success.

Winchelsea Community House



At Winchelsea Community House we are best known for all the things that we do to support our community. In particular some highlights are our outstanding Occasional Childcare Service and our recent new edition being a 'Chatty Café' held on Friday mornings – which is a place for anyone to come and relax and have a chat with others over a 'cuppa'.

Our childcare service was a very much needed service during covid and we managed to staff this service and keep everyone safe throughout the very long covid period. This was certainly not an easy task but with all the staff working together as a fabulous team we made this happen which allowed families to be able to have their children cared for whilst they worked from home, attended to home schooling other children or attended essential services jobs.



Torquay Community House

More photos from the

Know your Neighbourhood Project





Above: Torquay Community House

Below: Forrest District Neighbourhood House

Treasurer's Report

Last financial year 2021/2022 we ended the year with a small deficit of just over \$500 following a couple of years with higher surplus amounts. For 2022/2023 we set a budget with an expected deficit as we knew there were a number of projects that were planned, and we already had retained funds through grants to cover these. Following our COVID years we had not been able to fulfill all the required projects so knew we would have the opportunity to do these during the next couple of years.

We were fortunate that our community development worker Anthea was able to do some extra hours to work with the Know Your Neighbourhood House project as well as supporting the Governance project. We have also continued working on our reconciliation action plan as well as completing our website redevelopment.

Our financials show a deficit of just over \$30,000 for the year which may sound like a lot but looking at the amount of extra work that has been and the commitment from the committee to develop these programs that support the network, it is an investment into the sector and with the amazing projects that have been available to work on it is well worth the investment.

The network is in a healthy financial position as it currently has just over \$120,000 in retained funds at the end of the financial year which will continue to be allocated towards different projects in the coming years as well as ensuring the financial viability of the network. Some of these retained funds will be kept in reserve to make sure as per our policies that we always have access to six months advance of operational funds.

The network is supported by the Department of Families, Fairness and Housing (DFFH) who provide us with funding that covers the wages of our networker and community development worker.

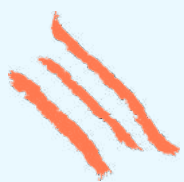
We are also fortunate to receive grants from City of Greater Geelong, Surf Coast Shire and Colac Otway Shire Councils to support neighbourhood houses in their municipalities.

This year we also saw a change in our financial support. We farewelled Christine Gibson as our bookkeeper at the end of 2022, Christine has been a great support to the network over the years but is moving towards retirement. We welcomed Summer McDermott from Fern Accounts as our new bookkeeper. Fern has helped with our transition from MYOB to Xero accounting software. Xero is a more user-friendly financial software program that will support the network with finances.

I would also like to thank Margaret and Renee at STS accounting for providing us with their professional services to complete our audit for the financial year and supporting our network staff.

We move into 2023/2024 again in a healthy financial position as look forward to supporting the whole Barwon network through more projects and support.

Julie Martin
Treasurer



We move into 2023/2024 again in a healthy financial position as look forward to supporting the whole Barwon network through more projects and support.

Interim EOFY Management Report, pending Audited Financials

Neighbourhood Houses Barwon Inc
ABN 43 226 845 853
For the year ended 30 June 2023

Prepared by Fern Business Services

Please note that these are interim reports, and that the audited financial will be provided to members once finalised due to missing data from an accounting IT change during the period.

Profit and Loss

Accrual

Neighbourhood Houses Barwon Inc For the year ended 30 June 2023

2023

Income

Trading Profit	
Revenue	131,602
Total Trading Profit	131,602
Total Income	131,602

Total Income 131,602

Expenses

Travel and Accommodation	1,630
Accounting & Bookkeeping	12,702
Advertising	2,700
Bank Fees	28
Catering & Event Expenses	3,946
COGG Grant Expenses	930
Community Development	200
Consultants & Contractors	4,945
DHS Support NH	4,203
Entertainment	340
Equipment <\$1000	3,018
HR Expenses	1,821
Industry Memberships	800
LSL Entitlement - Portable	1,344
Printing & Stationery	2,436
Professional Development	464
Rent	3,597
Staff Amenties	105
Subscriptions	1,597
Superannuation	10,324
Telephone & Internet	229
Wages and Salaries	104,977
Total Expenses	162,335

Profit/(Loss) before Taxation (30,732)

Net Profit After Tax (30,732)

Net Profit After Distributions/Dividends Paid (30,732)

Balance Sheet

Accrual

Neighbourhood Houses Barwon Inc As at 30 June 2023

30 JUN 2023

Assets

Current Assets

GST	36
Load & Go Card	1
NHB Debit Card	711
NHB Savings	69,793
NHB Statement Account	104,912
Total Current Assets	175,453

Non-Current Assets

Property, Plant and Equipment	1,068
Total Non-Current Assets	1,068

Total Assets	176,521
---------------------	----------------

Liabilities

Current Liabilities

Accounts Payable	7,026
Grants Received in Advance	34,724
Provision for Leave Entitlements	9,155
Superannuation Payable	2,885
Suspense	-
Total Current Liabilities	53,790

Total Liabilities	53,790
--------------------------	---------------

Net Assets	122,731
-------------------	----------------

Equity

Retained Earnings	122,731
Total Equity	122,731

Trial Balance

Accrual

Neighbourhood Houses Barwon Inc

As at 30 June 2023

ACCOUNT CODE	ACCOUNT	ACCOUNT TYPE	DEBIT - YEAR TO DATE	CREDIT - YEAR TO DATE	30 JUN 2022
201	Grant Funding	Revenue		121,388	-
202	Membership Income	Revenue		2,450	-
203	Other Income	Revenue		7,344	-
261	Interest Income	Revenue		421	-
400	Advertising	Expense	2,700		-
401	COGG Grant Expenses	Direct Costs	930		-
402	DHS Support NH	Direct Costs	4,203		-
404	Bank Fees	Expense	28		-
412	Accounting & Bookkeeping	Expense	12,702		-
413	Consultants & Contractors	Expense	4,945		-
415	Catering & Event Expenses	Expense	3,946		-
417	Equipment <\$1000	Expense	3,018		-
420	Entertainment	Expense	340		-
430	Community Development	Expense	200		-
454	Printing & Stationery	Expense	2,436		-
460	Industry Memberships	Expense	800		-
461	Professional Development	Expense	464		-
469	Rent	Expense	3,597		-
476	Staff Amenties	Expense	105		-
477	Wages and Salaries	Expense	104,977		-
478	Superannuation	Expense	10,324		-
479	HR Expenses	Expense	1,821		-
480	LSL Entitlement - Portable	Expense	1,344		-
485	Subscriptions	Expense	1,597		-
489	Telephone & Internet	Expense	229		-
493	Travel - National	Expense	-		-
494	Travel Expenses	Expense	1,630		-
	NHB Savings	Bank	69,793		-
	NHB Debit Card	Bank	711		-
	NHB Statement Account	Bank	104,912		-
710	Office Equipment	Fixed Asset	1,068		-
LOADNGO	Load & Go Card	Current Asset	1		-
800	Accounts Payable	Current Liability		7,026	-
805	Grants Received in Advance	Non-current Liability		34,724	-
820	GST	Current Liability	36		-
826	Superannuation Payable	Current Liability		2,885	-
827	Provision for Leave Entitlements	Non-current Liability		9,155	-
850	Suspense	Current Liability		-	-
960	Retained Earnings	Equity		153,464	-
Total			338,856	338,856	-

Statement of Cash Flows - Direct Method

Accrual

Neighbourhood Houses Barwon Inc

For the year ended 30 June 2023

2023

Operating Activities

Payments to suppliers and employees	(115,300)
Finance costs	(28)
GST	(2,285)
Cash receipts from other operating activities	137,408
Cash payments from other operating activities	(48,097)
Net Cash Flows from Operating Activities	(28,302)

Investing Activities

Payment for property, plant and equipment	(1,068)
Other cash items from investing activities	(175,417)
Net Cash Flows from Investing Activities	(176,485)

Financing Activities

Other cash items from financing activities	204,788
Net Cash Flows from Financing Activities	204,788

Net Cash Flows

-

Cash and Cash Equivalents

Cash and cash equivalents at beginning of period	-
Cash and cash equivalents at end of period	-

Aged Payables Summary

Accrual

Neighbourhood Houses Barwon Inc

As at 30 June 2023

CONTACT	CURRENT	< 1 MONTH	1 MONTH	2 MONTHS	3 MONTHS	OLDER	TOTAL
Aged Payables							
Australian Taxation Office	6,778	-	-	-	-	-	6,778
City of Greater Geelong	248	-	-	-	-	-	248
Total Aged Payables	7,026	-	-	-	-	-	7,026
Total	7,026	-	-	-	-	-	7,026
Percentage of total	100%	-	-	-	-	-	100%

Bank Summary

Accrual

Neighbourhood Houses Barwon Inc

For the period 1 July 2022 to 30 June 2023

ACCOUNT	BANK ACCOUNT TYPE	STATUS	OPENING BALANCE	CASH RECEIVED	CASH SPENT	CLOSING BALANCE
Bank						
NHB Debit Card	Bank	Active	-	3,123	2,412	711
NHB Savings	Bank	Active	-	69,793	-	69,793
NHB Statement Account	Bank	Active	-	180,776	75,864	104,912
Total Bank			-	253,692	78,276	175,416
Total			-	253,692	78,276	175,416

Profit and Loss

Cash

Neighbourhood Houses Barwon Inc For the year ended 30 June 2023 Cash Basis

2023

Income

Trading Profit

Revenue	131,602
Total Trading Profit	131,602

Total Income	131,602
---------------------	----------------

Total Income	131,602
---------------------	----------------

Expenses

Travel and Accommodation	1,630
Accounting & Bookkeeping	12,702
Advertising	2,700
Bank Fees	28
Catering & Event Expenses	3,946
COGG Grant Expenses	930
Community Development	200
Consultants & Contractors	4,945
DHS Support NH	4,203
Entertainment	340
Equipment <\$1000	3,018
HR Expenses	1,821
Industry Memberships	800
LSL Entitlement - Portable	1,344
Printing & Stationery	2,436
Professional Development	464
Rent	3,372
Staff Amenties	105
Subscriptions	1,597
Superannuation	10,324
Telephone & Internet	229
Wages and Salaries	104,977
Total Expenses	162,110

Profit/(Loss) before Taxation	(30,507)
--------------------------------------	-----------------

Net Profit After Tax	(30,507)
-----------------------------	-----------------

Net Profit After Distributions/Dividends Paid	(30,507)
--	-----------------

Balance Sheet

Cash

Neighbourhood Houses Barwon Inc

As at 30 June 2023

Cash Basis

30 JUN 2023

Assets

Current Assets

Load & Go Card	1
NHB Debit Card	711
NHB Savings	69,793
NHB Statement Account	104,912
Total Current Assets	175,417

Non-Current Assets

Property, Plant and Equipment	1,068
Total Non-Current Assets	1,068

Total Assets	176,485
---------------------	----------------

Liabilities

Current Liabilities

GST	2,205
Grants Received in Advance	34,724
PAYG Withholdings Payable	4,560
Provision for Leave Entitlements	9,155
Superannuation Payable	2,885
Suspense	-
Total Current Liabilities	53,529

Total Liabilities	53,529
--------------------------	---------------

Net Assets	122,957
-------------------	----------------

Equity

Retained Earnings	122,957
Total Equity	122,957

Trial Balance

Cash

Neighbourhood Houses Barwon Inc

As at 30 June 2023

Cash Basis

ACCOUNT CODE	ACCOUNT	ACCOUNT TYPE	DEBIT - YEAR TO DATE	CREDIT - YEAR TO DATE	30 JUN 2022
201	Grant Funding	Revenue		121,388	-
202	Membership Income	Revenue		2,450	-
203	Other Income	Revenue		7,344	-
261	Interest Income	Revenue		421	-
400	Advertising	Expense	2,700		-
401	COGG Grant Expenses	Direct Costs	930		-
402	DHS Support NH	Direct Costs	4,203		-
404	Bank Fees	Expense	28		-
412	Accounting & Bookkeeping	Expense	12,702		-
413	Consultants & Contractors	Expense	4,945		-
415	Catering & Event Expenses	Expense	3,946		-
417	Equipment <\$1000	Expense	3,018		-
420	Entertainment	Expense	340		-
430	Community Development	Expense	200		-
454	Printing & Stationery	Expense	2,436		-
460	Industry Memberships	Expense	800		-
461	Professional Development	Expense	464		-
469	Rent	Expense	3,372		-
476	Staff Amenties	Expense	105		-
477	Wages and Salaries	Expense	104,977		-
478	Superannuation	Expense	10,324		-
479	HR Expenses	Expense	1,821		-
480	LSL Entitlement - Portable	Expense	1,344		-
485	Subscriptions	Expense	1,597		-
489	Telephone & Internet	Expense	229		-
493	Travel - National	Expense	-		-
494	Travel Expenses	Expense	1,630		-
	NHB Savings	Bank	69,793		-
	NHB Debit Card	Bank	711		-
	NHB Statement Account	Bank	104,912		-
710	Office Equipment	Fixed Asset	1,068		-
LOADNGO	Load & Go Card	Current Asset	1		-
805	Grants Received in Advance	Non-current Liability		34,724	-
820	GST	Current Liability		2,205	-
825	PAYG Withholdings Payable	Current Liability		4,560	-
826	Superannuation Payable	Current Liability		2,885	-
827	Provision for Leave Entitlements	Non-current Liability		9,155	-
850	Suspense	Current Liability		-	-
960	Retained Earnings	Equity		153,464	-
Total			338,595	338,595	-

Statement of Cash Flows - Direct Method

Cash

Neighbourhood Houses Barwon Inc For the year ended 30 June 2023

2023

Operating Activities

Payments to suppliers and employees	(115,300)
Finance costs	(28)
GST	(2,285)
Cash receipts from other operating activities	137,408
Cash payments from other operating activities	(48,097)
Net Cash Flows from Operating Activities	(28,302)

Investing Activities

Payment for property, plant and equipment	(1,068)
Other cash items from investing activities	(175,417)
Net Cash Flows from Investing Activities	(176,485)

Financing Activities

Other cash items from financing activities	204,788
Net Cash Flows from Financing Activities	204,788

Net Cash Flows

-

Cash and Cash Equivalents

Cash and cash equivalents at beginning of period	-
Cash and cash equivalents at end of period	-

Aged Payables Summary

Cash

Neighbourhood Houses Barwon Inc

As at 30 June 2023

CONTACT	CURRENT	< 1 MONTH	1 MONTH	2 MONTHS	3 MONTHS	OLDER	TOTAL
Aged Payables							
Australian Taxation Office	6,778	-	-	-	-	-	6,778
City of Greater Geelong	248	-	-	-	-	-	248
Total Aged Payables	7,026	-	-	-	-	-	7,026
Total	7,026	-	-	-	-	-	7,026
Percentage of total	100%	-	-	-	-	-	100%

Bank Summary

Cash

Neighbourhood Houses Barwon Inc

For the period 1 July 2022 to 30 June 2023

ACCOUNT	BANK ACCOUNT TYPE	STATUS	OPENING BALANCE	CASH RECEIVED	CASH SPENT	CLOSING BALANCE
Bank						
NHB Debit Card	Bank	Active	-	3,123	2,412	711
NHB Savings	Bank	Active	-	69,793	-	69,793
NHB Statement Account	Bank	Active	-	180,776	75,864	104,912
Total Bank			-	253,692	78,276	175,416
Total			-	253,692	78,276	175,416

Neighbourhood Houses Barwon

Website: <https://www.nhbarwon.org.au/>

Email: info@nhbarwon.org.au

Facebook: <https://www.facebook.com/NHBarwon>

Phone: 0481 566 774

