

2024

The logo consists of a large orange shape resembling a stylized house or roof, with a blue rectangular area below it. Inside the blue area is a white heart shape.

Barwon Network  
of Neighbourhood  
Centres Inc.

**Annual  
Report**

# VISION

A collective voice and a sense of unity

# MISSION

To work within a community development framework to support the sustainability, development and growth of its members and the Neighbourhood House movement. The Network supports the diversity, and autonomy of its members, whilst advocating for them individually and collectively.





# CONTENTS

- 4 Our Statistics
- 5 Chair's Report
- 6 Partners
- 6 City of Greater Geelong
- 6 Colac Otway Shire
- 7 The Surf Coast Shire
- 7 Learn Local
- 7 Dept. of Health and Human Services
- 8 Coordinator's Report
- 8 Anakie & District Community House
- 9 Anglesea Community House
- 9 Bellarine Living & Learning Centre
- 10 Bellarine Training and Community Hub
- 10 Cloverdale Community Centre
- 11 Colac Neighbourhood House
- 11 Deans Marsh Community Cottage
- 12 Eastern Hub Community Centre
- 12 Forrest & District Neighbourhood House
- 13 Geelong West Neighbourhood House
- 13 Gellibrand Community House
- 14 Grovedale Neighbourhood House
- 14 Leopold Community & Learning Centre
- 15 Lorne Neighbourhood House
- 15 Marrar Woorn Neighbourhood House
- 16 Norlane Community Centre
- 16 Portarlington Neighbourhood House
- 17 Queenscliffe Neighbourhood House
- 17 Rosewall Neighbourhood Centre
- 18 South Barwon Community Centre
- 18 SpringDale Neighbourhood Centre
- 19 Torquay Neighbourhood House
- 19 Vines Road Neighbourhood House
- 20 Winchelsea Community House
- 20 Network Treasurer's Report
- 21 Audit Report
- 22 Balance Sheet
- 23 Profit & Loss Statement

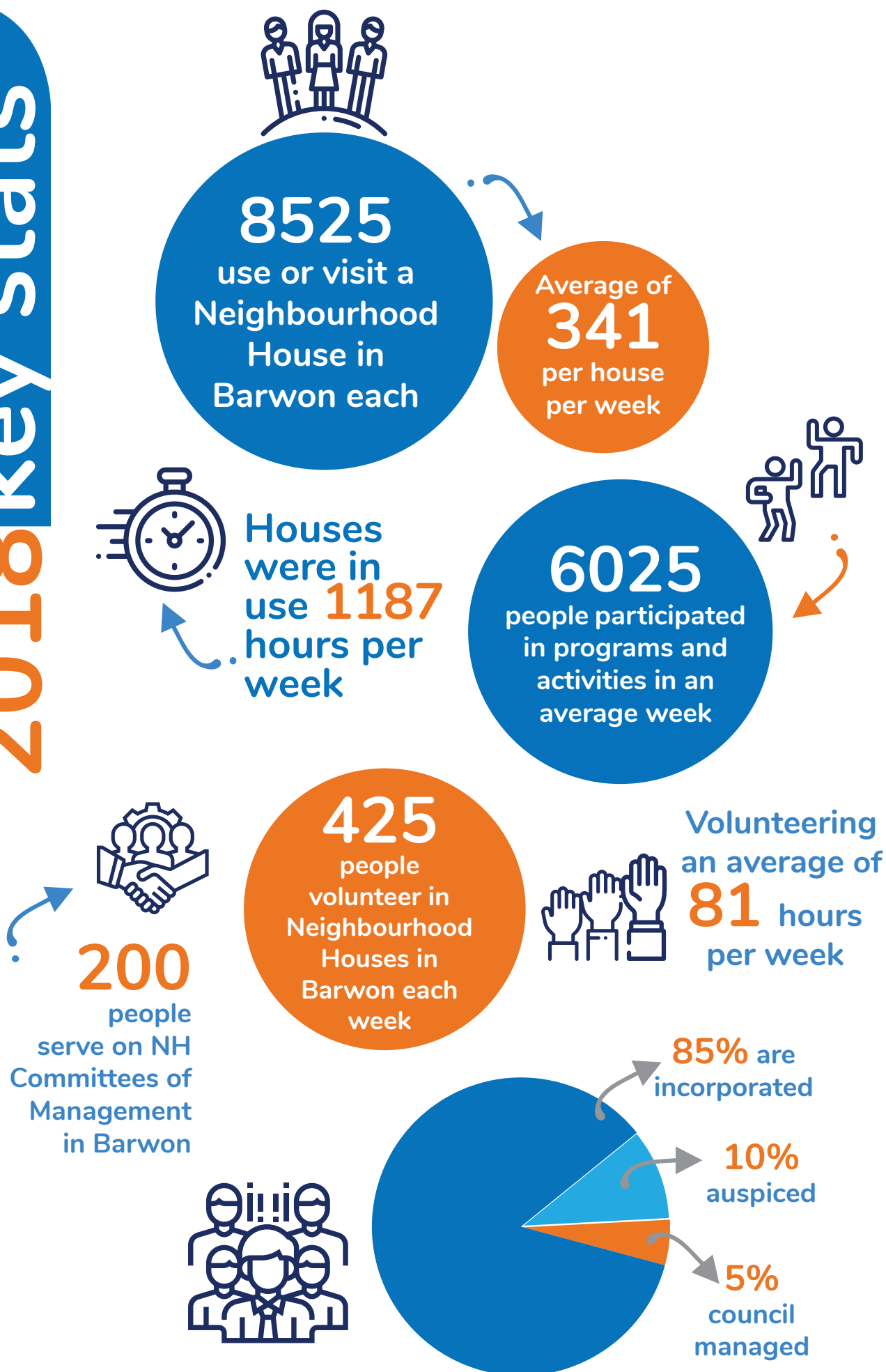
## PURPOSE

The Barwon Network of Neighbourhood Centres Inc will provide “a collective voice and a sense of unity” for its members.

## Priorities:

- Sharing resources, information and knowledge
- Linking members with each other and our community partners
- Community development
- Conversations- positive and productive
- Advocacy

# 2018 key stats



## : CHAIR'S REPORT

The past twelve months have certainly been a year of ups and downs for Barwon Network.

The ups include the continuation of our Sector Sustainability model, genuinely building on what we know about our members, based on solid evidence. Our learning and development program has been able to follow on from the Strategic Planning series to offer real and genuine support to our hard working coordinators and volunteers via a range of workshops and most particularly through the Making Mentors project. This pilot, in conjunction with NHVic who have an eye to how this might rollout across the state, has seen the establishment of all the systems and processes required to setup and operate a successful mentoring project. The pilot will reach its milestone at the end of the year, however anecdotal reports are glowing from both mentees and mentors. If you were not one of the 'early adopters' for this project make sure you keep it on your watch list for the future.

We also commenced work on establishment of a Reconciliation Action Plan, the first time in Victoria that anyone in our sector has embarked on this important work. This is a formal process, defined by Reconciliation Australia, which will flow into the next financial year at least.

The down for BNNC came when we regretfully accepted the resignation of our innovative and outstanding Networker, Christine Brooks. After six years of supporting our 26 member houses, building productive working relationships with education institutions, local governments, philanthropics and key partners Christine made a life changing decision to retire to the south east coast. We accepted her resignation with regret and wish her well on the next stage of life's journey.

After an exhaustive recruitment process, Fleur Parry was appointed to take on the role of Barwon Networker. Fleur is highly skilled community development worker, however, sadly after a short time (and beyond the time frame of this report) family circumstances made it impossible for her to continue in the role, so we are again about to commence a recruitment process.

Other highlights of the year include the ongoing commitment of Julia Leonard, who thanks to the increased NHCP funding has been able to be appointed to a perm part time position of BNNC Community Development worker. Her skills, capacity and experience are an invaluable support to our organisation and members. We have many partners and funders yet I must make special mention of DHHS staff, Deb Kearney, Renee Williams and Melinda Flood for their support to our sector – this is pretty unprecedented across the state and we very much appreciate the long term and productive relationships we have with you.

Again, our small and dedicated committee have undertaken their governance duties with willingness, diligence and humour. Sadly, Alan Barden's external commitments forced him to submit his resignation earlier in the year, but we were joined by Renee from Forrest NH. I strongly encourage members to think about coming on board the committee – it's a place of professional development and learning, of making a difference and of friendship. Its certainly time for some new blood on the committee, and to share the load between our member Houses. Particular thanks to secretary Sandra Anderson (Norlane NH) and Treasurer Wendy Greaves (Winchelsea CH) for their long service to BNNC.

Yours in friendship,  
**Beth**



Eastern Hub Geelong's participants

## CITY OF GREATER GEELONG



Neighbourhood Houses play a vital role across our municipality. In their own unique ways, each facility strengthens local communities, which aligns with our 30 year community-led vision for a Clever and Creative future.

We value the wide range of programs and services delivered by Neighbourhood Houses and we recognise their role providing social connection and opportunities for community development.

Our partnership with the Barwon Network of Neighbourhood Houses offers mutual benefits for the City and the Network. Neighbourhood Houses provide important channels for us to communicate with local communities, and in turn we support each neighbourhood house to help them meet the needs of their local community. In 2018-19, the City provided more than \$120,000 worth of grants to Neighbourhood Houses.

Projects being implemented through this fund include:

- An exercise and social group for elderly residents
- A food security program
- Digital drop-in café
- Drop-in for children and young people
- Upgrade of processes for a toy library
- Marketing and promotion for a newly-recognised house
- Sustainability training
- Digital literacy training for elderly residents

We are currently reviewing our support policy for neighbourhood houses to ensure we are continuing to deliver support where it's needed for grassroots community development.

Congratulations on a successful year and we look forward to a continuing our positive relationship with the Barwon Network of Neighbourhood Houses.

## COLAC OTWAY SHIRE



Colac Otway Shire recognises the continued role the Neighbourhood Houses have in our community in providing essential venues, programs and services that are based on local identified needs and aspirations. Over the past 12 months the Colac Otway Shire has continued to work closely with the neighbourhood houses in our community through:

- Providing funding support for the development of a Reconciliation Action Plan process for all Neighbourhood Houses
- Supporting the Neighbourhood Houses from Surf Coast Shire and Colac Otway Shire to meet regularly
- Being part of Neighbourhood House advisory bodies
- Providing information on council plans and requesting input from Neighbourhood Houses into those plans.

## SURF COAST SHIRE



The five Neighbourhood houses in Surf Coast Shire continue to contribute to outcomes that strengthen our community. Neighbourhood Houses in Winchelsea, Deans Marsh, Lorne, Torquay and Anglesea-Aireys Inlet provide a wide range of programs appealing to all ages and interests. Programs include financial education, yoga, pilates, zumba, meditation, wiser driving, art and photography classes, craft and preserve-making, first aid, book clubs, languages and many more. In the 2018-19 financial year, the Surf Coast Shire Council contributed \$32,500 to houses and the Barwon Network.

In addition to providing funding, Surf Coast Shire Council supports houses with the provision and maintenance of facilities, as well as guidance and support from a Community Project Officer. The Shire will continue to develop strong and productive relationships with Neighbourhood Houses, aligning with Council's Vision of 'An Engaged, Innovative and Sustainable Community' enabling the delivery of grassroots community development.

## LEARN LOCAL



Neighbourhood Houses that are registered with the Adult Community, and Further Education (ACFE) Board as Learn Local providers have a great record of supporting Victorians who face barriers in accessing education and training, and in building people's capabilities and confidence for work and life. They deliver accessible, locally based training often in places where there are fewer training options. They are among Victoria's most valuable community assets, improving the lives and prospects of many Victorians, and playing a positive role in strengthening local economies and communities.

Pre- accredited training courses and related services are delivered to Victorians facing learning barriers, developing their skills and starting them on pathways to employment or further education. The sector takes pride in positioning learners for future success by developing the broad range of skills required for these important transitions. Locally, the Department of Education and Training supports the Barwon Network of Neighbourhood Houses as an integral part of Victoria's adult community education sector.

## DEPARTMENT OF HEALTH AND HUMAN SERVICES



The last year has seen the Barwon Neighbourhood House sector design and participate in many important sector development opportunities. The Barwon Network in conjunction with key partners in the region commenced their Making Mentors Pilot, designed to assist in the building the capacity of Centre/House staff and their volunteers, engaging vulnerable Victorians in planning and program design processes and many more. These are just a couple of examples of collaborative projects that the Network has lead in conjunction with Houses and key partners to enhance the delivery of the neighbourhood

House Coordination program (NHCP) and deliver innovative and responsive programs, projects and opportunities to their communities.

## NETWORKER'S REPORT

**It has been another big year for Neighbourhood Houses in Barwon Region - with on average 8,525 people using or visiting a Neighbourhood House in Barwon each week.**

We continue to support our members to provide quality community development activities with their communities. This annual report showcases our members work on environmental sustainability with their communities, an area we will continue to work on together over the coming year.

This year we delivered a number of learning and development sessions in response to need from our members. This included Introduction to Neighbourhood House Finances, Risk Management Training, Responding to Occupational Violence, AGM

Planning and Governance Training.

We also provided a tour of Neighbourhood Houses for some of the new Coordinators in our network.

The third Art from the Neighbourhoods exhibition was held at the Shearers Arms Gallery from December 2018. The exhibition was an exciting community event that celebrated the creative talents of 64 artists from 11 Neighbourhood Houses across the Barwon Region.

The Making Mentors Pilot Project launched in May 2019. The project matched 9 mentees (Neighbourhood House Coordinators from across the Barwon region) with mentors who are leaders in their industries. The project provides support to the mentees by furthering their professional skills and knowledge.

This pilot project has been funded by Give Where You live, Neighbourhood Houses Victoria, Colac Otway Shire, City of Greater Geelong and Geelong Community Foundation.

Thank you to our partners and funding bodies for their support. These have included the Department of Health and Human Services, City of Greater Geelong, Colac Otway Shire, Surf Coast Shire, the Department of Education, Give Where you Live, Geelong Community Foundation and Geelong Connected Communities.

Lastly a big thank you to the members of the BNNC Executive Committee for their work over the year. The Executive is made up of Coordinators, Committee Members and volunteers from our member houses. Our work would not be possible without their support.

### Anakie Community House

#### Anakie Community House

2115 Ballan Road, Anakie VIC 3221



With this year's theme of environment/sustainability in mind, the following information relates solely to our small contributions to that end:

Anakie & District Community Group was at the forefront of recycling prior to yellow bins being introduced to the Geelong area.

Newspapers and cardboard, aluminium cans and car/truck/tractor batteries were all left at the rear of the community house and a volunteer loaded them onto his truck and took them (as far as Melbourne with the newspaper/cardboard) away once or twice a year. There was a small amount of fundraising money received, but it was more about encouraging recycling. We still collect aluminium cans and batteries, for fundraising purposes.

We are also a drop-off point for used spectacles, mobile phones and out-of-date medicines. These are taken to Corio Bay Rotary Club and distributed to third world countries.

We have held 'Swap Stuff' (check out 'The Story of Stuff', a 20 minute on-line movie) days, where residents can bring in any unwanted item/s and swap it for someone else's unwanted item/s. Home grown vegetables, flowers, plants, eggs and new, unused, or barely used, items have been brought in to swap.

We accept second-hand books and DVDs and have set up a free lending library as a result. We also have on hand: wheelchairs, walkers, toilet and shower seats and even a mobility scooter. These are available to residents for loan at no cost.

We recently installed a drinking fountain and arranged collection of some free water bottles from Barwon Water. Now, instead of having plastic bottles of water for sale, we offer a free water bottle with top-up any time.



## Anglesea & District Community House

5 McMillan St, Anglesea

At the Anglesea Community House we are always looking for ways to be more sustainable. We have solar panels on our roof. We are currently a collection point for old spectacles and batteries. We run a very successful program at the Anglesea transfer station. We coordinate a number of community groups who man the "resale shed" on a Saturday morning. We are able to sell items that are still in good condition but would have ended up in landfill. The money that we make is distributed between all the community groups that take turns to run it.

Sustainability is becoming a part of our everyday lives. We are noticing a change in the way people think. Anglesea was recently used as a trial town for the Surf Coast Shire in implementing a new waste service. Everyone was provided with a waste caddy and compostable bags to collect their compostable waste. Anglesea now only has landfill collected every second week reducing landfill. This is now being rolled out throughout the whole Surfcoast.



## Bellarine Living & Learning Centre

Bellarine Living & Learning Centre Inc. (BLLC) has made a commitment to reduce our impact of the environment.

BLLC Food Security program has implemented a range of opportunities for environmental sustainability. We currently address the issue of food waste by working in partnership with Second Bite, Food Bank Victoria and a local bakery to ensure perfectly good food that would usually make its way to landfill, actually makes it to those who need it most. Any food scraps from this process are used for compost or animal feed. Excess fruit and vegetables are used to cook meals by our volunteers to be distributed through the foodbank program.

We currently recycle bags for Foodbank, encouraging Foodbank recipients to BYO bag. When bags are forgotten then boxes that would otherwise be recycled are utilised.

BLLC are working in partnership with Sew Funky, a sewing program run from the Centre, to sew bags for food parcels to help us reach a plastic free goal by early 2020.

Moving forward, our goal is to have a recycled cup station established for our coffee and tea facilities that is available during Foodbank and FoodConnect days. This will greatly decrease the use of disposable coffee cups, thus reducing waste.





## Bellarine Training & Community Hub

## Bellarine Training & Community Hub

(formerly Ocean Grove Neighbourhood Centre)



This year has seen the centre grow from strength to strength.

We have achieved and implemented many community development projects including auspicing the Ocean Grove Repair café, open days, youth events, a youth camp to the Gold Coast and activities in supporting mental health as well as community education and Accredited Training.

The centre is the only neighbourhood house in the region registered as a RTO and once again delivered high quality education throughout the region from Certificate III to Diploma level courses outreaching to 10 of the centres within the Barwon Region.

We have achieved higher than State average with over 85% of participants completing their courses and have achieved a 99% employment rate on completions.

BTACH strives to maintain sustainability in all areas of operation including, community kitchens and gardens, a drop of point for fresh produce for the community, recycling, our book swap. We also offer many community educational courses each term promoting sustainability within our region.



## Cloverdale Community Centre

167-169 Purnell Road, Corio 3214



Cloverdale has made an ongoing commitment to sustainable projects and practices. This was cemented with our Committee of Management creating a budget line specifically for sustainability.

### The Good Coffee Project

This project is a sustainability initiative which involves a simple process;

Community members are encouraged to bring rinsed, disposable coffee cups to the centre, and in return they receive a disposable coffee cup with a seedling in it. All plants distributed are food plants.

We are currently partnered with The Farm Next Door and The Aviary Café but ultimately we want to create a movement! A reuse initiative that extends beyond coffee cups and keeps items out of landfill.

### Project background

Studies suggest that more than 50,000 cups of coffee are consumed every half an hour in

Australia (Sustainability Victoria 2019).

That is an estimated 1 billion takeaway hot drink cups every year. If we lined up these takeaway cups from Australia alone, it would stretch around the world twice.

Landfills around the world are being overwhelmed by the arrival of an estimated 2 million used coffee cups every day (The University of Melbourne 2019). It is unknown how long it takes for each disposable coffee cup decompose (Potter 2017). It is estimated that more than 40 per cent of solid waste within landfills around the world is paper and cardboard (Caliendo 2013). Most plastic cups contain a coating of polyethylene resin, which ensures insulation and durability, but prevents the recycling of the cups.



## Colac Neighbourhood House

23 Miller St, Colac 3250



Colac Neighbourhood House is endeavouring to become plastic free and chemical free and encourage all members and community visitors to the House to engage in the same practises when using the facility.

We have a strict policy around the refusal of use of disposable cups.

BYO mug, keep cup or use one of ours is the motto.

Waste is sorted into specific well labelled bins and the use of bin liners is discouraged.

Food scraps are sorted into three compost bins in our lovely garden.

We request that tap water only be drunk at events where previously cans of soft drink and plastic water bottles had been the drink of choice for a number of groups who use the House on a regular basis.

Lamination of signs has reduced by 80%.

We are currently waiting for a response from management re a request to become a chemical free space.



## Deans Marsh Community Cottage

10 Pennyroyal Valley Rd, Deans Marsh 3235

Our community has long recognised the value of the ecosystem services provided by our area's biological infrastructure and have long been engaged in Landcare initiatives and the Otway Agroforestry Network.

There is a clear commitment among locals to restore landscape function and build economic, ecological and social resilience into rural landscapes.

Agricultural production has shifted away from large-scale dairy, sheep, beef cattle, potato and pea production to smaller industries such as berry, olive, garlic and vegetable growing, bee keeping and honey production, wineries and agroforestry farms.

The Deans Marsh Community Cottage works with our community to support projects that encourage sustainability, climate change adaptation and a healthy resilient community.

Our programs and events are held according to Waste Wise guidelines and principles and we are always looking to keep improving our practices. Supporting groups like the local Grow, Make, Gather team

provide opportunities for our local community to learn and practice skills of sustainability and gather to share ideas, inspiration and of course great food.

BROUGHT TO YOU BY GROW MAKE GATHER AND THE DEANS MARSH COTTAGE



# WINTER FORAGING GATHERING

Meet at Deans Marsh Cottage.  
Sunday June 2nd. 10:45am \$10  
BYO: basket, gloves, secateurs

FOR BOOKINGS GO TO: [HTTPS://WWW.TRYBOOKING.COM/BCSND](https://www.trybooking.com/BCSND)  
OR EMAIL US AT [GROWMAKEGATHER@GMAIL.COM](mailto:GROWMAKEGATHER@GMAIL.COM)

**Eastern Hub**  
Geelong

**Eastern Hub Geelong**  
285A McKillop Street, East Geelong 3219

Eastern Hub Community Centre, as a comparatively new organisation, aims to be environmentally responsible in all areas of its operations, with sustainability and achieving a low carbon footprint a priority.

Eastern Hub is a new building (opening in 2016) designed to have a low environmental impact. It is equipped with solar panels, rammed earth walls in the public areas and water tanks, compost bins and a worm farm in the garden area. Lights operate on motion sensors.

As an organisation with multiple components (we are co-located with Seasons Café and genU's Participate day programs) becoming sustainable is a work in progress and part of continuous improvement. We endeavour to make all community activities low or no waste and encourage the reuse and/or recycling of materials and objects.

For example, the popular Book Swap recirculates books into the community, food swap encourages the swapping and sharing of garden produce and Creative Book Arts uses donated or out of date materials. The recent Books Beyond Boundaries project sourced decommissioned library books for remaking and altering and sculpted bookworks were made from scavenged materials.

The newly established Garden Club provides raised garden beds for community members to grow their own herbs and veggies and Transition Streets McKillop holds its monthly meetings at Eastern Hub on bring a plate to share basis. The garden also provides a model of gardening sustainably



with many plants grown from donated cuttings. The small orchard is a model in how to grow your own fruit in a small space.

Understanding and becoming sustainable links into Eastern Hub's aim of building inclusive communities, genuinely inclusive of all people regardless of age, background or ability, but also to build environmental responsibility into inclusion. The planet is not ours to trash.



**Forrest & District Neighbourhood House**  
Public Hall, Grant St, Forrest 3236



The Forrest & District Neighbourhood House takes environmental sustainability and awareness very seriously as does many of the people that live in the area.

We try our best to embed elements of sustainability in all of our programs and activities as well as daily operating of the neighbourhood house.

From little things like re-using scrap paper for craft in playgroup to utilising and sharing food from supermarket food recovery in our weekly community lunch and food share cart.

We accept donation of toys and equipment for play group, a small street library where people can share books as well as an inhouse lending library that is made up of donated books.

We also offer a droppoint for e-waste and soft plastic recycling.

We share excess fruit, veggies and bread with the primary school and kindergarten next door and in return we receive herbs from their garden and eggs from their chickens.

We compost all food waste and share 'the good stuff' with the school's chooks.

Regular events and activities like roving refills, clothes swaps and town garage sales encourage sustainable practice and being mindful of the small changes we can all easily make that have great benefit to our planet and our wellbeing.



## Geelong West Neighbourhood House

89 Autumn Street, Geelong West 3218

Geelong West Neighbourhood House has gone through some major changes in the past year. After being an unfunded house for 9 years and staffed entirely by volunteers, the committee of management were successful in obtaining funding from DHHS Coordination program to employ a Coordinator for 25 hours per week. In March a new Coordinator, Lisa Young was employed. With a strong background on Neighbourhood Houses and Community Development, Lisa is ready to Take the wheel and steer the house into the future.

When we look at the houses sustainability activities and actions, the strongest action would be to utilise the under utilised buildings and rooms located throughout Geelong West to offer a variety of programs to the local community.

As yet Geelong West does not have a permanent home, so partnering with other community organisations such as Community Gardens, COGG and other community groups, we have been able to make good use of spaces that would otherwise remain empty.

Geelong West Neighbourhood House also makes use of West Park, which is attached to the office space to put together free community events. We also have a link with the local sustainability street and are embarking on a new partnership with Pakington St Farmers Market in the next 12 months.



## Gellibrand Community House

Rex Norman Reserve, 5 Main Road,

The Gellibrand Community House has been busy over the past year with regular groups getting together and working towards creating a better sustainable environment in a very local way.

Groups that meet regularly through the house is the weekly walking group,

The edible garden group meets monthly at the members private gardens where they work on each others gardens. During this time they share gardening and food ideas, saving and sharing seeds and plants.

The community garden group meet fortnightly along the garden pathway that meanders throughout the Gellibrand river township, creating community relationships and a beautiful town the community is proud of.

The Gelli house itself boasts a great vegetable garden , which proudly demonstrates the amount of food that can be grown in a small space

Events such as the Gellibrand market held in February, boasted a no single use plastic policy where only reusable and compostable utensils were allowed to be used. Bin fairies would monitor the bins so the waste streams were kept clean, and recycling bins were free from contamination. The kids activities consisted of a mask making workshop using recycles



and repurposed items, this was a great success with some real treasures being made.



## Grovedale Neighbourhood House

45 Heyers Road, Grovedale 3216

Grovedale Neighbourhood House (GNH) has partnered with and works on events with the Grovedale Community Orchard, Grovedale Food Swap, Grovedale Community Garden and Transition Streets Geelong to raise awareness about food sustainability. This includes a Seed Library at GNH and a Sustainability book library.

Last year this partnership facilitated a 4 week Sustainability Project called 'Grow It, Eat it'. A celebration of local food growing. The community picnic had zero waste!

This year 2019 we partnered with the Community Orchard on the 'Food is Free' project at GNH. Locals that grow organic food leave it at the Hub so anyone can take what they need.

Feedback from the Hub participants is that some fine dishes and sauces have been made from the limes, lemons herbs and kaffir leaves.

The GNH and the Community Orchard also have partnered on the Seed Library at the Hub and the Sustainability book library.



*Leopold Community  
& Learning Centre*

## Leopold Community & Learning Centre

45 Ash Rd, Leopold 3224



Leopold Community and Learning Centre has had a busy and exciting year starting with our move down to the Leopold Community Hub and plenty of new programs. We are fortunate our new building has solar panels and plenty of energy and water efficient devices. Our Get Your Granny On workshop series which is about teaching the skills your grandmother had and reducing waste has been popular. This year our soap making, vegetable pickling, relishes and sauces and herbal teas (made without teabags) were in high demand.

We are working on establishing a community garden and once we have this established we are planning an "Off the Rails" (Bellarine Rail Trail) project which will be similar to a food is free laneway but run once a month and will also have "swap stall, where people can exchange no longer needed items for something they may need (we will trial this for a while and see how it goes).

Our Boomerang Bags group is going gang busters with their 3,100th bag completed last week.



## Lorne Community House

16 Mountjoy Pde, Lorne 3232

Volunteers collect between 150-200 kilograms of food waste weekly from local cafes to feed over 100,000 hungry worms at Lorne Community House. The Minimising Café Waste Project operates two large composting bays, while one bay gets fed café scraps for around 10 weeks the worms do their work to create castings, they then migrate to the other bay once all food has been composted and it begins to be fed. Community members can buy castings and are encouraged to start their own worm farm by being supplied with a free starter pack of worms. The Community House vegetable garden is thriving by having the benefit of the richest natural fertilizer and tonnes of organic waste is being diverted from landfill.



## Marrar Woorn Neighbourhood House

6 Pengilley Ave, Apollo Bay 3233

A major project this year has been working with the Colac Otway Shire and Great Ocean Road Health - Otway Health campus to deliver facility improvements at the Apollo Bay Seniors Centre. With funding from a 2018 Pick my Project grant, alongside Colac Otway Shire financial input, we have been able to improve the hall's thermal values through installing double glazed windows as well as a solar system with battery reserves for sustainable energy and back-up power in case of extreme weather events.

This is the only hall in Apollo Bay suitable for medium sized community events with a capacity of 100 seats and 2 smaller meeting rooms.

Facility improvements also include community cinema facilities, new chairs and tables as well as upgrades to the kitchen, bathrooms and storage facilities. Going forward, this venue will support the community through film events, live performances and have an important role as a respite venue on days of high fire danger or extreme weather.





## Norlane Community Centre

Windsor Park, 39a Rose Ave, Norlane 3214



The Barwon Network's Sustainability forum was an opportunity to look around with fresh eyes and acknowledge the efforts of our community:

Our Tool Pool lends out lawn mowers to members for a small fee and has some garden equipment available to borrow.

We auspice Boomerang Bags which Mel facilitates every second Friday. The group is about sewing sustainably - making bags, diverting waste, starting conversations, connecting with each other, fostering sustainable behaviour, and having fun!

They've recently become a collection point for plastic bottle tops and looking into other items eg. bread-tabs.

Corio Library is close-by, but our Book Lending Library is another option for borrowing rather than buying.

Our garden guys have a compost bin for our community gardeners use.

We recently partnered with Norther Bay College Wexford Campus students to pick up rubbish from Windsor Park to stop items entering our waterways.



## Portarlington Neighbourhood House

28 Brown Street, Portarlington 3223

The PNH philosophy of operating under a volunteer skill share model continues to showcase the generosity of our community and their willingness to contribute to something we all care about and that benefits so many in our community.

Our 600 plus members have once again been presented with the most diverse and interesting range of programs and French Conversation, Yoga, Resin Jewellery, Bollywood, Natural Therapies, Meditation and Mindfulness and a Repair Café have been added to the 40 programs per week already on offer. We have been entertained By the Dixie Chicks Unsung Heroes show, the Navy Band, La Mama Theatre production of To Lonely with Love, Halloween House Fancy Dress Concert, High Tea in the Salon for Senior's Week, the Can Film Festival in aid of the Food Assistance Program and the Longest Afternoon Tea fundraiser for the Cancer Council.

A Drone Workshop and Mid-Winter Words Weekend have educated us. Under the direction of 2 dedicated volunteers our well stocked, comprehensive library has continued to open for all in the community.

Our writing groups deliver the quarterly Portal writers magazine and our House Proud newsletter continues to inform all. The committee of management and office volunteers visited neighbourhood houses in Corio, Altona and Newport to gain further insight and ideas for operating a neighbourhood house.

The Children's School Holiday program continued to provided free, quality entertainment with the Mik Macs, a puppet show – A Little Bit of Blue” and a Legos Fun Day as well as free movies and popcorn. On these days we supported the St Andrews Church Book Swap and Sales in support of the Indigenous Literature Association.



Lastly, and even more importantly, the Portarlington Neighbourhood House has relocated to new premises at Parks Hall. Now established in the main hub of Portarlington and operating in a new offices and reception, the Neighbourhood House now better reflect the community in which it serves.



## Queenscliffe Neighbourhood House

3 Tobin Drive, Queenscliffe 3225

Queenscliffe Neighbourhood House hosts the local Boomerang Bags Project which sees a group of volunteers getting together each week to make re-usable bags for the community from upcycled donated fabrics.

The bags are offered as a sustainable alternative to plastic bags and are provided free at the two local supermarkets. Every bag made saves the use of 200 plastic bags. In the first year, over 750 bags have gone out into the community. The aim of the project is to start conversations about plastic and encourage the sustainable behaviour of re-use.

Queenscliffe Neighbourhood House is also a collection point for recycling batteries & toothpaste and toothbrush tubes.



## Rosewall Neighbourhood Centre

36 Sharland Rd, Corio 3214

Rosewall is fortunate to have a super sustainable future in its energy efficient new building.

Thanks to Geelong City Council, Anthony Aitkens and Rosewall's Committee of Management, our new centre opened on Monday August 26th. The centre boasts 46 solar panels for hot water and energy supply, double glazed windows, insulation and north facing skylights for solar gain and energy reduction. Recycled bricks have materials have been incorporated with bricks, and recycled water from water tank will be used in the toilets.

Rosewall is collecting for recycling: pens, bottle tops, bread tags, shredded office paper and food scraps for garden compost.

Our future plans are to co-design with community participants a high-tech garden at the new centre. Our vision is for an accessible garden that incorporates technology to provide interaction for maintenance, learning about gardening, healthy eating and providing fun. Art and interactive play spaces will be added in stages.





## South Barwon Community Centre

33 Mt Pleasant, Rd, Belmont 3216



Over the last few years it has become apparent that each of us need to take responsibility for our carbon footprint.

In line with this we received a grant from COGG to work on the centre's environmental sustainability.

The first step was to have an energy audit of the centre.

There were some shocks that should have been self evident, for example the boiling Billy on the wall provided the option of boiling water for a cup of tea 24/7, we are not here 24/7. Good fortune smiled on us and the device broke down so we got the council to remove it and now use a kettle and urn for larger groups.

With this grant we were able to make the recycling, we had been collecting more obvious and have been surprised at the increase in turn over. We will continue collecting and distributing a myriad of items for reuse and repurposing.

We will be vigilant, taking care not to be wasteful and using the most sustainable products for the environment. However this arena continues to provide challenges as things change constantly and what we thought was best practise in 2018 may not be the case in 2019 like Which paper should we really use?



## SpringDale Neighbourhood Centre

17-21 High St, Drysdale 3222

SpringDale Neighbourhood Centre – where ideas grow and people flourish. SpringDale has a wide variety of regular ongoing activities that fall under the sustainability umbrella.

30 years ago we started a toy library and a Jigsaw library 16 years ago. We have 5 Men's Community Kitchen groups that meet weekly. Our Harvest Basket vegetable swap started approximately 10 years ago, we created raised garden beds outside SpringDale approximately 7 years ago and our Community Garden started about 5 years ago. We support the Drysdale Food Bank, collecting clothes and bedding for homeless, collecting batteries, and have recently started collecting bottle tops.



SpringDale started using, training and selling Bokashi food recycling systems and we continue to support the wider Geelong community through this social enterprise.

We continue to run Bus Travel training sessions. We recently installed solar panels and we have a few water tanks. We look forward to realising our next opportunity.



## Torquay Community House

14 Price Street, Torquay 3228

We have a new partnership with Surf Coast Shire to run environmental workshops starting with a talk about Solar Energy for those thinking about installing solar with over 50 people subscribed to it so far. Roving Refills are visiting each month and is gaining in popularity with up to two hour queues of local people reducing plastic waste and the natural resources used to create them by reusing containers and stocking up on responsibly sourced toxin free soaps, detergents, shampoo, borax and vinegar. Our craft shop stocks a supply of handmade goods made from upcycled materials made by our crafters or refugees such as; face washers, dish clothes, food covers, pot stands, heat bags and vegetable weigh bags. Most of the money from these craft items goes back into community house or refugee programs.

There are sewing programs at the house which teach how to repurpose clothing/ material and food workshops such as Basic Cheesemaking which will reduce fashion and plastic supermarket waste. Apart from normal recycling we also recycle soft plastics and plastic bottle tops, the latter for Envision (to make prosthetics hands for children). Our vegetable and fruit scraps are turned into compost by our Women's Sharing Shed Torquay for our gardens. We are in the process of upcycling a computer network cabinet and turning it into a book library and food swap. Finally our local council is doing an environmental energy audit at the house to see how we can save energy and thus reduce costs and emissions.



## Vines Road Community Centre

37-61 Vines Rd, Hamlyn Heights 3215

Hello from Vines Road Community Centre! We have had an exciting year building the foundations of our environmental sustainability focus.

The Vines Road Community Centre Committee have produced an excellent Sustainability Policy this year, an essential tool to set the agenda of our vision. Our goals include reducing our energy and water consumption, and maximising 'green purchasing' options with waste avoidance in mind.

We are fortunate to have a building that has eco friendly additions including automated louvres that open when the temperature rises, and a ventilation system that alleviates the need for air conditioning.

We are hoping to improve our sustainability further with the installation of solar panels and by commissioning our existing water tanks.

We have recently appointed an enthusiastic volunteer to manage our vegetable garden and he has just harvested the first organic lettuce, celery, broccoli and cauliflower. Plans to enrol more volunteers and share the delicious produce with our community are in the works now that we have a dedicated community member on board.

To quote our new policy 'We believe in fostering a positive attitude, awareness and appreciation of sustainable environmental practices'. And this is just the beginning!





## Winchelsea Community House

28 Hesse St, Winchelsea 3241



Winch House collects Bread Tags, Batteries and Ink cartridges for recycling. There are also bags available for sending off used and unwanted mobile phones.

We also keep a record of the weight of our batteries and ink cartridges. For the six months to 30/6/19 this equated to 12.5kg of batteries and 14.0kg of ink cartridges.

In our day to day operations we are very conscious of reducing waste and we recycle cardboard packaging and use unwanted printing as scrap paper and note pads.

We also recycle materials in our Occasional Care for the children to make wonderful creations from.

Our Mens Shed auspice group run a community garden and our craft ladies make bags for our Toy Library. We also operate a book library.

We all need to be focused on environmental factors and I encourage you all to REUSE, REDUCE and RECYCLE so that we can all do our bit to protect are environment.

## NETWORK TREASURER'S REPORT

**It is my pleasure to present to you again the finances of The Barwon Network of Neighbourhood Houses for the year ended 30th June, 2019.**

We have again had a successful year and have been involved in offering a lot of training and support for Neighbourhood Houses. Many of our offerings for the year have been funded by grant monies that we were successful with.

Although we are reporting a financial loss of \$8622.95 it should be noted that we used our current year's funds in paying out the liabilities owed to Christine Brooks on her departure in May instead of breaking our Long Service Leave Liability Term Deposit for this payment.

Had we not done this we would have been very close to a break even point which was very much in line with our projected budget result being a profit of \$1484. We are still fortunate enough to have a good level of reserves (approx. \$79000).

We were sorry to have Christine Brooks depart in May but this position was filled with a job share between Fleur Parry and Julia Leonard. Both of these ladies have worked extremely hard in continuing all current projects and helping and supporting houses as required. It is with regret now that Fleur has left us and the Barwon Network is currently reviewing the Networker role in readiness for recruitment.

As costs continue to increase and wage increases under the 2016 Neighbourhood House Collective Agreement have been applied, we are now again faced with having to set a deficit budget of \$9017

for the 2019/2020 year. There has been no increase to our funding to offset the wage and cost increases.

Once again our Bookkeeper Christine Gibson has done a wonderful job keeping our financial records in order and our auditor Mark Wilkinson oversees this during the end of year audit. Thank you to both of these wonderful people.

We look forward to another great year ahead as we continue to assist all houses in our network to service their respective communities in the best possible way.

**Wendy Greaves**  
Honorary Treasurer

## AUDITOR'S REPORT

Barwon Network of Neighbourhood Centres Inc.

ABN 56 750 287 843

Independent Audit Report to the Members

### Scope

I have audited the attached financial report, being a special purpose financial report comprising Detailed Balance Sheet and Profit and Loss Statement for the year ended 30 June 2019 of the Barwon Network of Neighbourhood Centres Inc. The Committee is responsible for the financial report and has determined that the accounting policies used are appropriate to meet the requirements of the Associations Incorporation Reform Act 2012 and are appropriate to meet the needs of the members. I have conducted an independent audit of this financial report in order to express an opinion on it to the members of Barwon Network of Neighbourhood Centres Inc. No opinion is expressed as to whether the accounting policies used are appropriate to the needs of the members.

The financial statements have been prepared for the purpose of fulfilling the requirements of the Associations Incorporation Reform Act 2012. I disclaim any assumption of responsibility for any reliance on this report or on the financial report to which it relates to any person other than the members, or for any purpose other than for which it was prepared.

My audit has been conducted in accordance with Australian Auditing Standards. My procedures included examination, on a test basis, of evidence supporting the amounts and other disclosures in the financial report, and the evaluation of accounting estimates.


These procedures have been undertaken to for an opinion whether, in all material respects, the financial report has presented a view which is consistent with my understanding of the association's financial position, and performance as represented by the results of its operations. These policies do not require the application of all Accounting Standards and other mandatory professional reporting requirements in Australia.

The audit opinion expressed in this report has been formed on the above basis.

### Audit opinion

In my opinion, the financial report presents fairly the financial position of Barwon Network of Neighbourhood Centres Inc as at 30 June 2019 and the results of its operations for the year then ended.

Signed on 2nd September 2019



**Mark Stuart Pressland Wilkinson,**  
ASIC Registered Company Auditor 4485

Liability limited by a scheme approved under  
Professional Standards Legislation

PO Box 235, Leopold Vic 3224

## BALANCE SHEET

Created: 13-Aug-19 12:08 PM

### Barwon Network of Neighbourhood Centres

#### Balance Sheet [Last Year Analysis]

June 2019

45 Heyers Road  
Grovedale Vic 3216

ABN: 43 226 845 853

Email: barwonnet@gmail.com

	This Year	Last Year	\$ Difference	% Difference
<b>Assets</b>				
Current Assets				
Cash On Hand				
Cheque Account	\$41,330.11	\$68,017.77	(\$26,687.66)	(39.2)%
Load & Go	\$1.00	\$221.00	(\$220.00)	(99.5)%
Undeposited Funds	(\$7,087.71)	\$0.29	(\$7,088.00)	(2,444,137.9)%
Investment Account - A/c 6815	\$61,639.18	\$60,641.34	\$997.84	1.6%
TD 3813 Future Leave	\$5,250.20	\$5,132.16	\$118.04	2.3%
Petty Cash	\$253.30	\$82.36	\$170.94	207.6%
<b>Total Cash On Hand</b>	<b>\$101,386.08</b>	<b>\$134,094.92</b>	<b>(\$32,708.84)</b>	<b>(24.4)%</b>
Trade Receivable	\$0.00	\$110.00	(\$110.00)	(100.0)%
<b>Total Current Assets</b>	<b>\$101,386.08</b>	<b>\$134,204.92</b>	<b>(\$32,818.84)</b>	<b>(24.5)%</b>
<b>Total Assets</b>	<b>\$101,386.08</b>	<b>\$134,204.92</b>	<b>(\$32,818.84)</b>	<b>(24.5)%</b>
<b>Liabilities</b>				
Current Liabilities				
Trade Creditors	\$145.00	\$1,770.40	(\$1,625.40)	(91.8)%
GST Liabilities				
GST Collected	\$2,424.48	\$3,647.50	(\$1,223.02)	(33.5)%
GST Paid	(\$1,208.15)	(\$764.34)	(\$443.81)	(58.1)%
<b>Total GST Liabilities</b>	<b>\$1,216.33</b>	<b>\$2,883.16</b>	<b>(\$1,666.83)</b>	<b>(57.8)%</b>
Payroll Liabilities				
Superannuation Payable	\$1,796.64	\$930.86	\$865.78	93.0%
PAYG Withholding Payable	\$0.00	\$1,344.00	(\$1,344.00)	(100.0)%
<b>Total Payroll Liabilities</b>	<b>\$1,796.64</b>	<b>\$2,274.86</b>	<b>(\$478.22)</b>	<b>(21.0)%</b>
Grants In Advance 2018	\$0.00	\$39,380.50	(\$39,380.50)	(100.0)%
Grants in Advance 2019	\$18,955.06	\$0.00	\$18,955.06	NA
<b>Total Current Liabilities</b>	<b>\$22,113.03</b>	<b>\$46,308.92</b>	<b>(\$24,195.89)</b>	<b>(52.2)%</b>
<b>Total Liabilities</b>	<b>\$22,113.03</b>	<b>\$46,308.92</b>	<b>(\$24,195.89)</b>	<b>(52.2)%</b>
<b>Net Assets</b>	<b>\$79,273.05</b>	<b>\$87,896.00</b>	<b>(\$8,622.95)</b>	<b>(9.8)%</b>
<b>Equity</b>				
Retained Earnings	\$87,896.00	\$78,438.29	\$9,457.71	12.1%
Current Year Surplus/Deficit	(\$8,622.95)	\$9,457.71	(\$18,080.66)	(191.2)%
<b>Total Equity</b>	<b>\$79,273.05</b>	<b>\$87,896.00</b>	<b>(\$8,622.95)</b>	<b>(9.8)%</b>

This report includes Year-End Adjustments.

# PROFIT & LOSS STATEMENT

Created: 13/08/2019 4:20 PM

## Barwon Network of Neighbourhood Centres

### Profit & Loss [With Last Year]

July 2018 To June 2019

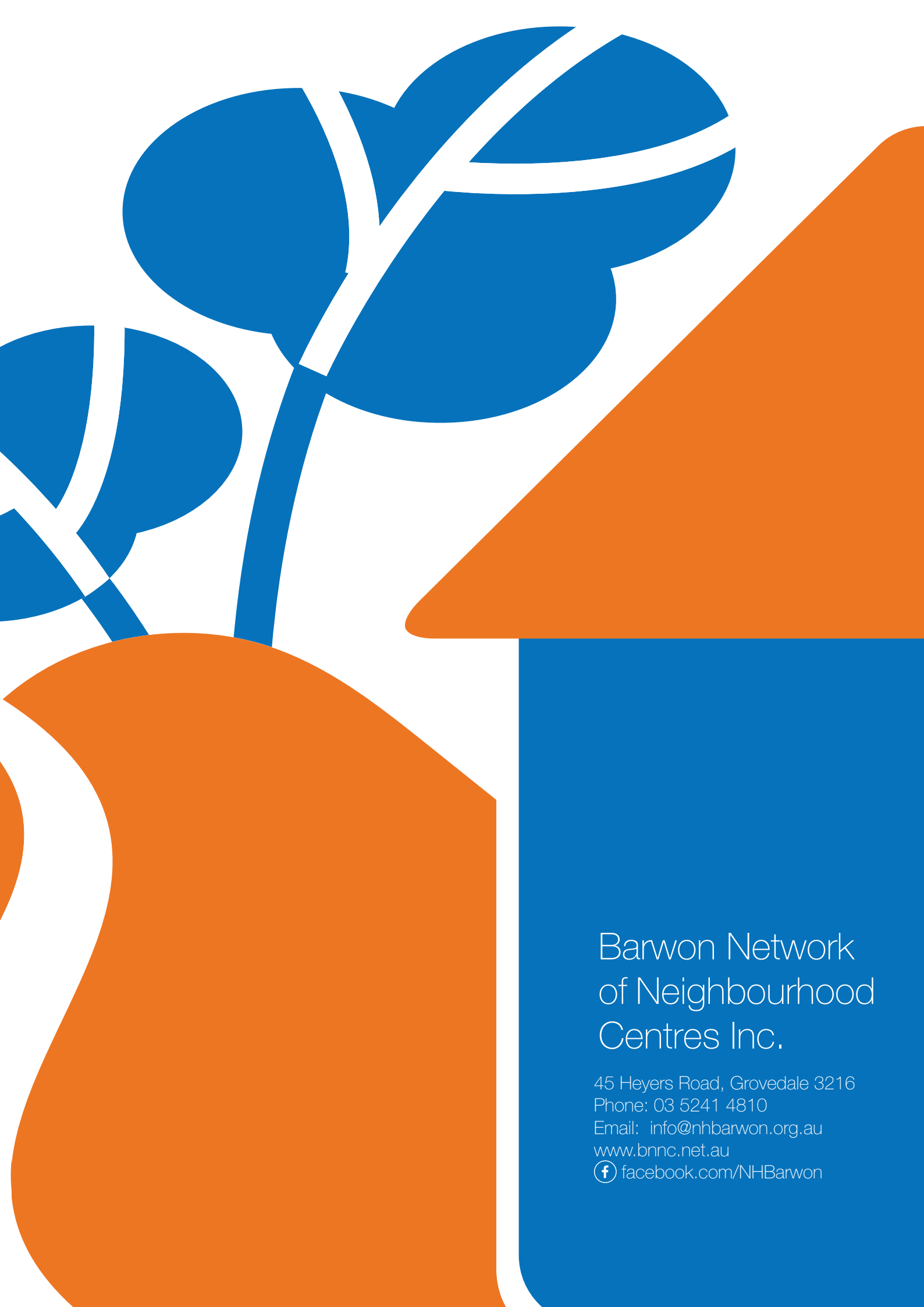
45 Heyers Road  
Grovedale Vic 3216

ABN: 43 226 845 853

Email: barwonnet@gmail.com

	This Year	% of Sales	Last Year	LY % of Sales
<b>Income</b>				
Funding				
DHS - Networker Grant	\$95,132.78	61.2%	\$64,920.69	68.6%
Surf Coast Shire	\$2,500.00	1.6%	\$2,500.00	2.6%
Colac Otway Shire	\$4,050.50	2.6%	\$1,494.45	1.6%
COGG	\$11,386.96	7.3%	\$6,818.18	7.2%
Partnering for Access	\$0.00	0.0%	\$960.18	1.0%
Geelong Connected Communities	\$858.58	0.6%	\$1,641.36	1.7%
Membership and Subscriptions	\$2,505.00	1.6%	\$2,350.00	2.5%
Give where You Live Grant	\$17,329.35	11.2%	\$12,670.64	13.4%
Admin	\$750.00	0.5%	\$0.00	0.0%
Grants	\$13,174.42	8.5%	\$1,300.00	1.4%
Conferences / Workshops	\$158.73	0.1%	\$0.00	0.0%
Grovedale NH Engage Proj	\$7,500.00	4.8%	\$0.00	0.0%
<b>Total Income</b>	<b>\$155,346.32</b>	<b>100.0%</b>	<b>\$94,655.50</b>	<b>100.0%</b>
<b>Grant Expenditure</b>				
COGG Grant Expense	\$8,350.00	5.4%	\$0.00	0.0%
DHS Tenant Engage Grant J403	\$9,397.20	6.0%	\$0.00	0.0%
Making Mentors Pilot Pr J 507	\$17,235.50	11.1%	\$0.00	0.0%
Give Where You Live Grant Exp	\$300.00	0.2%	\$0.00	0.0%
<b>Total Grant Expenditure</b>	<b>\$35,282.70</b>	<b>22.7%</b>	<b>\$0.00</b>	<b>0.0%</b>
<b>Gross Profit</b>	<b>\$120,063.62</b>	<b>77.3%</b>	<b>\$94,655.50</b>	<b>100.0%</b>
<b>Expenses</b>				
Accounting/Bookkeeping	\$8,298.64	5.3%	\$5,757.05	6.1%
Advertising	\$1,551.82	1.0%	\$0.00	0.0%
Bank Charges	\$6.84	0.0%	\$6.62	0.0%
Conferences etc	\$350.00	0.2%	\$1,146.93	1.2%
Consultants	\$890.50	0.6%	\$2,035.80	2.2%
Equipment Rental Expense	\$0.00	0.0%	\$500.00	0.5%
Grants - ANHCA Give WY Live	\$7,135.00	4.6%	\$12,481.37	13.2%
Gifts etc	\$355.27	0.2%	\$0.00	0.0%
Catering	\$2,356.36	1.5%	\$1,932.94	2.0%
Internet	\$261.84	0.2%	\$0.00	0.0%
Memberships and Subscriptions	\$991.81	0.6%	\$1,210.82	1.3%
MYOB On-line subs	\$525.00	0.3%	\$660.00	0.7%
Maintenance	\$0.00	0.0%	\$132.00	0.1%
Office Supplies	\$243.33	0.2%	\$289.27	0.3%
Postage	\$0.00	0.0%	\$23.64	0.0%
Partnership Administration	\$750.00	0.5%	\$0.00	0.0%
Professional Development	\$340.91	0.2%	\$0.00	0.0%
Printing	\$2,790.27	1.8%	\$2,122.00	2.2%
Venue Hire	\$2,788.54	1.8%	\$2,653.64	2.8%
Travel External Yr 19	\$200.00	0.1%	\$0.00	0.0%
Web Maintenance	\$3,246.73	2.1%	\$684.00	0.7%
Employment Expenses				
Staff Amenities	\$107.82	0.1%	\$0.00	0.0%
<b>Total Employment Expenses</b>	<b>\$93,179.74</b>	<b>60.0%</b>	<b>\$52,819.94</b>	<b>55.8%</b>
Telephone	\$30.00	0.0%	\$0.00	0.0%
Travel Ext DO NOT USE	\$0.00	0.0%	\$636.48	0.7%
COGG				
Community Development	\$0.00	0.0%	\$1,800.00	1.9%
COLAC Community Development	\$3,509.85	2.3%	\$0.00	0.0%
<b>Total Expenses</b>	<b>\$129,802.45</b>	<b>83.6%</b>	<b>\$86,892.50</b>	<b>91.8%</b>
<b>Operating Profit</b>	<b>-\$9,738.83</b>	<b>(6.3)%</b>	<b>\$7,763.00</b>	<b>8.2%</b>
<b>Other Income</b>				
Interest Income	\$1,115.88	0.7%	\$1,694.71	1.8%
<b>Total Other Income</b>	<b>\$1,115.88</b>	<b>0.7%</b>	<b>\$1,694.71</b>	<b>1.8%</b>
<b>Total Other Expenses</b>	<b>\$0.00</b>	<b>0.0%</b>	<b>\$0.00</b>	<b>0.0%</b>
<b>Net Profit/(Loss)</b>	<b>-\$8,622.95</b>	<b>(5.6)%</b>	<b>\$9,457.71</b>	<b>10.0%</b>

This report includes Year-End Adjustments.



# Barwon Network of Neighbourhood Centres Inc.

45 Heyers Road, Grovedale 3216

Phone: 03 5241 4810

Email: [info@nhbarwon.org.au](mailto:info@nhbarwon.org.au)

[www.bnnc.net.au](http://www.bnnc.net.au)

 [facebook.com/NHBarwon](https://facebook.com/NHBarwon)