



# Caring for Community

ANNUAL REPORT



NEIGHBOURHOOD  
HOUSES BARWON



## Vision

Community development principles and practice delivered with a sense of unity and a collective voice.

## Mission

Enabling the delivery of quality community development through high level representation, advice, guidance and support.

## Purpose

Neighbourhood Houses Barwon Inc will provide "a collective voice and a sense of unity" for its members.

## Acknowledgment

Neighbourhood Houses Barwon acknowledges the Traditional Owners and Custodians of the land on which 24 Neighbourhood Houses connect with their communities – the land of the Waddawurrung, Eastern Maar, Gulidjan and Gadubanud people – and pays respects to Elders, past, present and emerging. Neighbourhood Houses Barwon acknowledges and pays respect to the First Nation's people and the continuation of cultural, spiritual and education practices. We value and include people of all cultures, languages, abilities, sexual orientations, gender identities, gender expressions and intersex status. We are committed to providing programs that are fully inclusive. We are committed to the safety and wellbeing of people of all ages, particularly children.

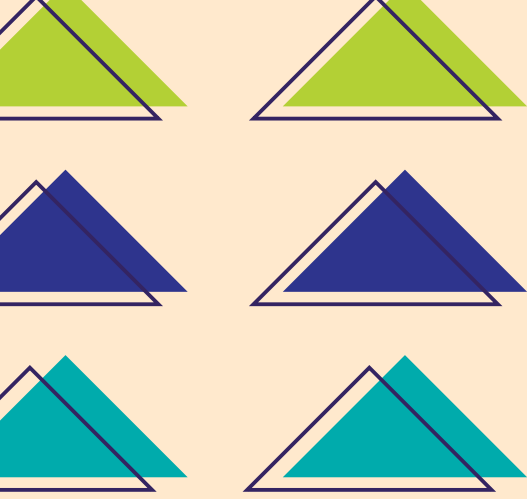
## Priorities

- Sharing resources, information and knowledge
- Linking members with each other and our community partners
- Community development
- Conversations- positive and productive
- Advocacy



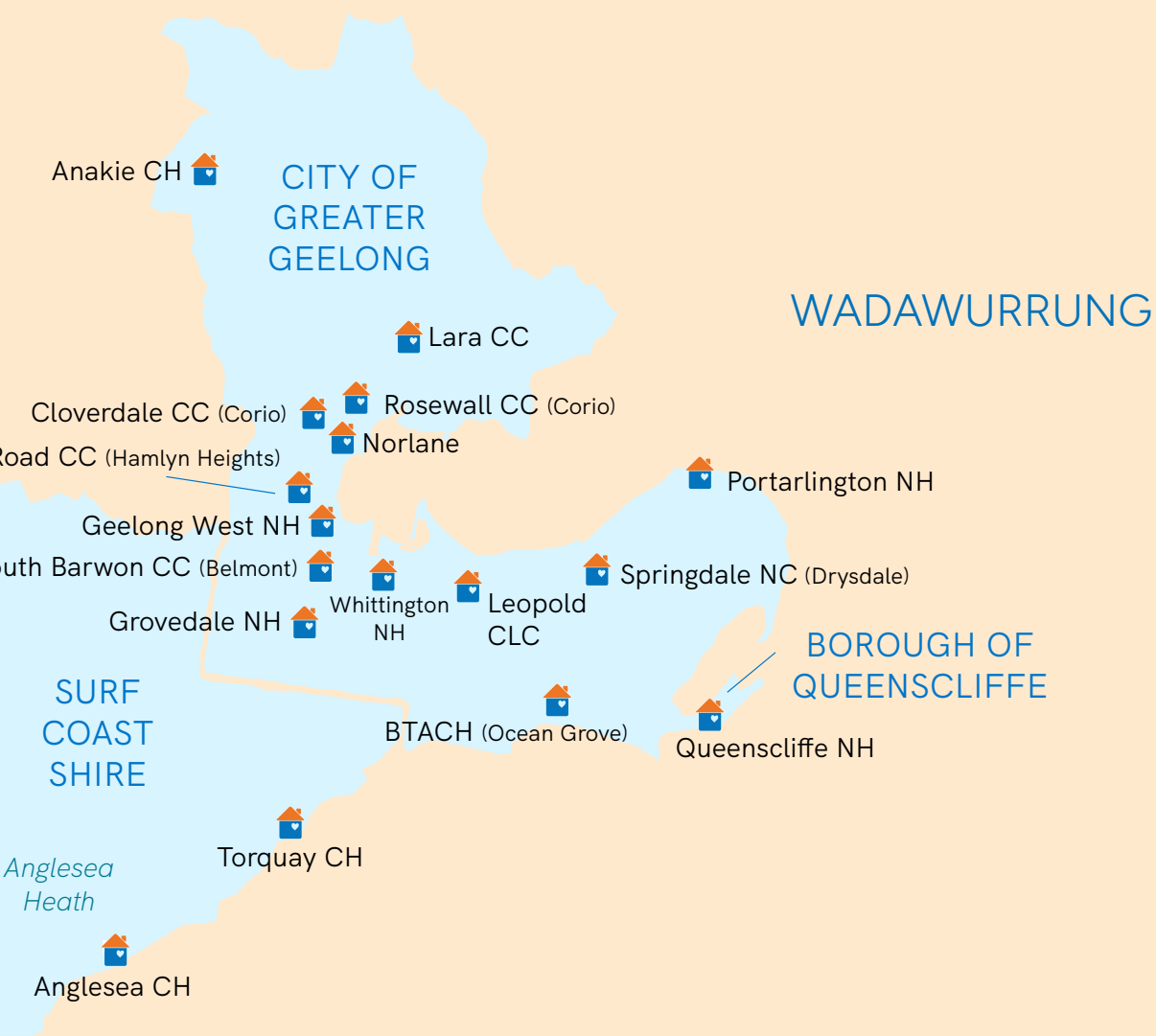
# Contents

Vision, Mission, Purpose & Priorities	2
Where Our Members Are	4
From our President & Network Coordinator	6
Neighbourhood Houses in Barwon Snapshot	10
NHB Reconciliation Action Plan (RAP) 2024	12
Be Connected Digital Mentors Project	14
Caring for Carers Project	15
Anakie Community House	16
Anglesea Community House	17
Bellarine Training and Community Hub (BTACH)	18
Cloverdale Community Centre	19
Colac Neighbourhood House	20
Deans Marsh Community Cottage	21
Forrest & District Neighbourhood House	22
Geelong West Neighbourhood House	22
Gellibrand Community House	23
Grovedale Neighbourhood House	24
Leopold Community & Learning Centre	24
Lorne Community House	25
Marrar Woon Neighbourhood House	26
Norlane Community Centre	27
Portarlington Neighbourhood House	28
Rosewall Community Centre	29
South Barwon Community Centre	30
SpringDale Neighbourhood Centre	31
Torquay Community House	32
Vines Road Community Centre	33
Whittington Neighbourhood House	34
Winchelsea Community House	35
Treasurer's Report	36



# Where Our Members Are





## JOINT REPORT

# From our President & Network Coordinator

JODIE FLOOD

AMY HUNTER

On behalf of the Executive Committee of Neighbourhood Houses Barwon (NHBarwon), we are pleased to present the annual report for 2023–24. Caring for Community is the theme of this year's report and much of our focus this year has been on providing opportunities for Coordinators and Committees to connect, grow and thrive. It has been another busy year for the Network and we have undertaken a range of new initiatives to benefit the sector broadly while continuing to provide advice and support to individual Houses as needed.

In an increasingly resource constrained operating environment we are cognisant of the difficult financial pressures Houses face. In May, in response to the City of Greater Geelong's draft Budget, NH Barwon worked with members to advocate for an increase to the Community Grants allocation for Neighbourhood Houses. This resulted in a \$50,000 increase to the allocation of Neighbourhood House funding and importantly, the use of this additional funding is to be determined by each organisation according to its own needs. We provided value to members through a number of funded capacity building opportunities throughout the year. We delivered in-person and online Child Safety training modules as well as a comprehensive Aboriginal and Torres Strait Islander Cultural Competency course, in support of our Reconciliation Action Plan. At the 2023 Annual General Meeting we launched the Community Governance Made Easy workbook and have been delighted at the feedback on the usefulness and applicability of this comprehensive resource. This practical guide has been supplemented by Governance Induction training, enabling Committees of Management to connect and share best practice.

NH Barwon commenced the 2023/24 year with Fiona Reidy in the Networker role until February 2024 when Amy Hunter returned to her substantive position.

These two outstanding Network Coordinators made significant achievements in their respective periods in the role this year, including the delivery of the projects outlined in this report. Amy and Fiona each brought considered and sage information to the Executive Committee at every opportunity. Our Networkers were well-supported by the Community Development Coordinator, Anthea Warlond, who continues to amaze us with the volume and quality of work produced in 10 short hours per week. We acknowledge the fantastic work of Joanne Zdybel who was appointed in February to coordinate the Surf Coast Caring for Carers project and of Tony Phelps who led the Digital Mentors initiative which saw 46 volunteer mentors trained and ready to support communities across the region in reaching their digital literacy goals.

Though beyond the timeframe of this report, it is relevant to note that in July 2024 we received the resignation of Network Coordinator, Amy Hunter, who is pursuing a once-in-a-lifetime opportunity for her and her family to move to the Pacific. The Executive Committee thanks Amy for the care, wisdom, and dedication to achieving excellent outcomes she brought to the role. Fran Fogarty was appointed to the role in August and we look forward to the drive, knowledge and experience that she will bring to the sector.

An enormous thank you to our Governance mentors for their contributions to the Network - Austin Patterson, Jill Evans, Beth Davidson, Marg White, Jenny Speed, Greame Howie and Deb Kearney. This experienced team have provided mentorship and guidance to a number of Neighbourhood Houses and their experience and skill are deeply valuable to NH Barwon, and valued by NH Barwon.

NH Barwon is pleased to continue its strong working relationships with its State and local government partners – namely the Department of Families,

Fairness and Housing (DFFH), Department of Jobs, Skills, Industry and Regions (DJSIR), City of Greater Geelong, Borough of Queenscliffe, Surf Coast Shire and Colac Otway Shire. We recognise the importance both of the funding and strategic support these government bodies provide to the Neighbourhood House sector in the Barwon region and we continue to be eager to find ways to strengthen the sector through collaboration and advocacy on behalf of our members.

In 2023-2024 the Executive Committee was comprised of a mix of long-serving and new members and we recognise the commitment, diligence, and energy they each brought and thank them – Julie Martin (Treasurer), Sandra Anderson (Secretary), Jodii Anderson, Prue Challis, Melissa Hutchinson and Alan Davies - for their service to the sector. A particular note of appreciation to outgoing President, Deb Kearney, for her committed service and inclusive leadership for the previous two years.

Looking ahead, NH Barwon will be reviewing its Strategic Plan to ensure that the activities of the Network best reflect the current needs of our members as well as supporting Houses to respond to future trends and demands. We will work towards expanding our impact and representing the interests of our members in the year ahead.

**JODIE FLOOD**

President, November 2023 to July 2024

**AMY HUNTER**

Network Coordinator, February to July 2024



## City of Greater Geelong



The City of Greater Geelong has witnessed another significant year of achievement by the Neighbourhood Houses (NH) located within the municipality. The City recognises the contribution that the various programs and activities offered through the NH sector make in providing access to services, educational and recreational opportunities to community members. These activities address social justice, provide community inclusion, and deliver local services across a range of areas, including childcare, food bank and vocational courses to enhance employment opportunities to name just a few.

The City maintains its commitment to the sector through the delivery of the community grants program including the Neighbourhood House Grants, the Healthy and the Connected Communities Grants, the Children's Week Grants, the Positive Ageing Grants and the Christmas in the Community Grants. With the total funding allocation of \$203,853 in the 2023/24 financial year. Through these grants the Neighbourhood House Coordinators developed

and implemented new projects that addressed community need.

Neighbourhood Houses Barwon has continued to provide invaluable support to the sector through the provision of advocacy, training, and network meetings to ensure the vitality of the NH sector, and the sharing of ideas and resources. The completion of the comprehensive Governance resources and training materials to support the governance of NH's during the period was a significant achievement. Access to this information will prove vital in contributing to the stability of the NH sector in the years to come.

The City remains committed to further strengthening the NH's in the municipality and working with Neighbourhood House Coordinators and Neighbourhood Houses Barwon in continuing community development based on principles of equity, compassion and empowerment.

**ROBERT MENZIES**  
Team Leader Community Inclusion

## Colac Otway Shire



The local Neighbourhood Houses have done a terrific job in supporting our communities throughout the reporting period. The Neighbourhood Houses in Apollo Bay, Colac, Forrest and Gellibrand have delivered a range of services and activities to the community and continue to bring people together to connect, share information and participate in training and development opportunities.

Council provides an annual funding allocation to our local Neighbourhood Houses and the Barwon Region to support the fantastic work that the Neighbourhood Houses deliver. The funding is provided in recognition of the important role they play within our local communities.

At the heart of each of the Neighbourhood Houses are the people delivering for our communities. Council would like to thank the staff, committees, volunteers and participants for their commitment to supporting our community.

**IAN SEUREN**  
General Manager Community and Economy

## Surf Coast Shire



Surf Coast Shire is proud to partner with our five Community Houses in Anglesea, Deans Marsh, Lorne, Winchelsea and Torquay to support our community to thrive. Our Community Houses play a vital role in the delivery of programs, services and events that respond to the emerging needs of the community.

We work collaboratively with each of our Community Houses to align our health and wellbeing actions to work towards a collective impact approach. We recognise and value the enormous amount of knowledge, skills and expertise that exist within our community, and work together with our Community Houses to leverage these skills and deliver health and wellbeing activities across the Shire. Over the past twelve months all of the Community Houses have continued to create welcoming, safe and inclusive spaces that enhance social connection and belonging.

Key activities delivered over the past twelve months in partnership with Council include:

Social media and marketing training - run in collaboration with Deans Marsh Community House with participants from Deans Marsh, Winchelsea and Moriac.

National Volunteer Week Celebrations – activities held in Winchelsea and Torquay celebrating the wonderful contribution made by volunteers in our community.

Community Lunches – free lunches provided to the community once a month to bring individuals together to promote social connection and interaction through cooking and sharing a meal.

16 Days of Activism – participated in the Clothesline Project involving the creation of t-shirts that displayed messages of hope, accountability, and education, which were then put on display at public venues.

RSA courses – We partnered with community houses to deliver RSA courses throughout the year to over 120 community members, free of charge.

Caring for Carers – supported the NHB Caring for Carers project on the Surf Coast.

We thank our local Community Houses for their ongoing work with our community and look forward to continuing our strong partnership.

**LAURA HUNT**  
Community Development Advisor



## Department of Families, Fairness and Housing



Families,  
Fairness  
and Housing

This year I had the pleasure of returning to the sector as the local Neighbourhood House portfolio holder in Department of Families Fairness and Housing (DFFH) with Megan's departure in November 2023. I continue to be amazed by the passion and dedication of the committees, staff and volunteers of the 24 houses across the Barwon Area each continuing to meet their community needs with a wide range of partnerships, programs and supports.

I would like to congratulate Neighbourhood Houses Barwon on building on the successes of the Governance project and the Reconciliation Action Plan with great opportunities to strengthen

individual Neighbourhood House's governance and cultural awareness this year. I had the privilege of working with Anthea, Fiona, Amy and Fran to support individual houses, each bringing their high calibre skills and experience to enrich the sector. Thank you.

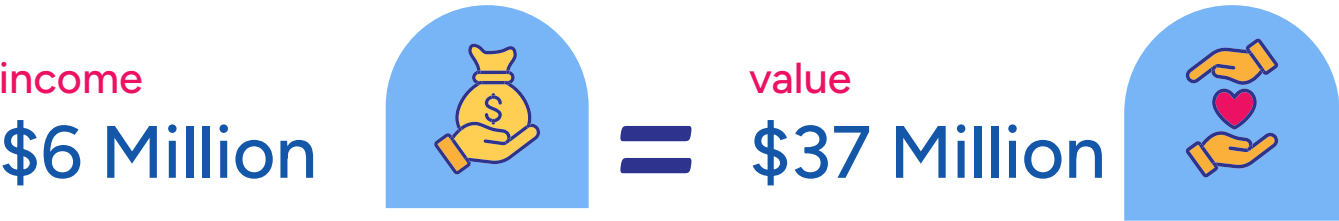
DFFH looks forward to continuing to work alongside the Network and Neighbourhood Houses to provide support to DFFH clients and the wider community.

**AMANDA MIGGINS**  
Senior Community Partnerships Officer  
Community Partnerships Team

SNAPSHOT

# Neighbourhood Houses in Barwon

Real Impact. Real Value.



This community value equates to:



**\$6.01** for every \$1 of income;  
**\$15.32** for every \$1 of  
Neighbourhood House  
Coordination Program funding

This figure includes the value of:



These values are produced by Neighbourhood Houses Victoria based on data provided by Neighbourhood Houses in Barwon in the 2022 Neighbourhood Houses Survey. Some figures have been rounded up.



LEFT: Gellibrand Community House; RIGHT: Grovedale Community House

## Emergency relief value includes:

**\$1.6m**

Food and Groceries



**\$10k**

Food Vouchers



**\$5k**

Cash/prepaid or gift card



**\$13k**

Clothing



**\$4k**

Personal care and hygiene items



## Service value includes:

**\$1.6m**

Facilities use or hire



**\$743k**

Fee for service activities



**\$229k**

Community Lunch, frozen or other meals



**\$748k**

Power Saving Bonus



**\$70k**

Auspicing other organisations



**\$14k**

Computer/Internet usage



**\$11k**

Resume Assistance



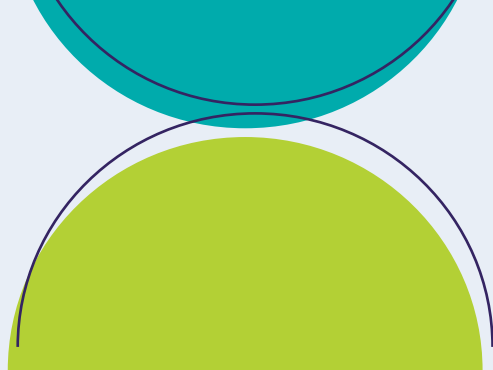
**\$15k**

Tax Help



A full report is available from NHBarwon. Please email [info@nhbarwon.org.au](mailto:info@nhbarwon.org.au).

# NHB Reconciliation Action Plan (RAP) 2024



In 2024, the RAP Working Group continued its dedication to advancing reconciliation and strengthening partnerships across the Barwon region through our Reflect RAP. Our group consists of coordinators from Neighbourhood Houses: Prue (Torquay), Kyla (Gellibrand), Anne (SpringDale), Caroline (Deans Marsh), Sally (Vines Rd), and NHB Community Development Coordinator Anthea Warlond. We were thrilled to have collaborated with Surf Coast for Reconciliation, welcoming Jen and Brent to our group and thanking them for their valuable contributions.

## Key Areas of Focus in 2024:

### Online Training and Walk on Country

We successfully delivered online training sessions aimed at supporting our teams and communities in developing a deeper understanding of First Nations cultures. In addition, the Walk on Country event, held in partnership with Wadawurrung Traditional Owners Aboriginal Corporation, provided an opportunity for participants to connect with the land and gain insight into its cultural significance.

### Developing the Community of Practice Framework

We are working with Marsha Uphill from Arranyinha to create a framework for the Community of Practice (CoP), which will help Neighbourhood Houses become more effective allies and foster inclusive, welcoming environments for First Nations people.

### Reconciliation Week Film Night

During Reconciliation Week, we hosted a successful film night at Deans Marsh, attended by around 50 community members. The event sparked meaningful discussions about First Nations stories. We are planning more film nights and events featuring First Nations content in 2025.

**Friday Fortnightly Content** We consistently provided updates, educational materials, and resources related to reconciliation in our Friday Fortnightly newsletter, keeping the wider community informed and engaged in the process of reconciliation.

### Revised Terms of Reference

We revised the terms of reference for the RAP Working Group to better align with our RAP goals and actions, ensuring that our future initiatives continue to reflect our commitment to reconciliation.

## Looking Ahead to 2025 some of our key focuses will include:

### Community Education Around Treaty

With Treaty negotiations on the horizon, we will focus on educating our communities about the significance of the Treaty process in Victoria. Neighbourhood Houses are well-positioned to foster conversations, provide accurate information, and combat misinformation as we support the journey toward justice and reconciliation.

### Establishing a Community of Practice

Building on our work with Marsha Uphill, we aim to officially establish the Community of Practice, creating a space for sharing knowledge, cultural learning, and capacity-building across the Neighbourhood House network.

### Reviewing Cultural Learning Needs

To continue growing as allies, we plan to review our cultural learning needs to identify areas for improvement. This review will ensure that our practices remain culturally sensitive, relevant, and impactful.

The RAP Working Group acknowledges that reconciliation is a continuous journey. We remain committed to deepening our engagement with First Nations communities, expanding our understanding, and fostering meaningful change across our region.

### Co-Chairs RAP Working Group

**ANTHEA WARLOND**  
Community Development Coordinator, NHB

**PRUE CHALLIS**  
Manager, Torquay Community House

# Our Members

**Anakie  
Community  
House**

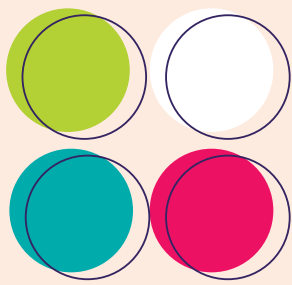


**Bellarine Training  
& Community Hub**



**DEANS MARSH  
COMMUNITY  
COTTAGE**





# Be Connected Digital Mentors Project

The *Be Connected Digital Mentors* project was initiated in mid-2023 with the Network successful in obtaining a \$25,000 grant from Good Things Foundation. The project, led by Winchelsea Community House chair Tony Phelps, sought to train volunteers across the region to support community members in accessing and utilising the government's free online learning portal. By the project's completion, 46 Digital Mentors across 12 Neighbourhood Houses throughout the Barwon region participated in capacity building workshops and became 'Digital Mentors' with the skills to offer one-on-one assistance or facilitate group sessions, guiding individuals through the basics of navigating the digital world. The goal was not for Mentors to be IT experts but to encourage, assist, and empower those hesitant about technology, making online life more accessible and manageable.

## Community Outcomes:

**Independence:** Participants gained confidence and developed essential digital skills, enabling them to navigate online resources, connect with loved ones, and access services independently.

**Inclusion and Connectivity:** The project aimed to bridge the digital divide, helping participants become active members of the digital community.

**Community Support and Growth:** Through mentorship, the program created a supportive and inclusive environment where individuals felt valued and encouraged to explore new digital possibilities.

**Personal Development for Mentors:** Digital Mentors not only provided guidance but also experienced personal growth through the act of teaching, enriching their understanding of the challenges others face in the digital world.

The project's engagement with the *BeConnected* portal and the "Get Online" campaign played a key role in increasing digital literacy and promoting inclusivity across the region. Additionally, the federally funded initiative offered grants to support free digital literacy sessions and encouraged participation in the annual "Get Online Week" with a \$1,000 event grant. These efforts collectively contributed to building a more digitally inclusive community.



By the project's completion, 46 Digital Mentors across 12 Neighbourhood Houses throughout the Barwon region participated in capacity building workshops and became 'Digital Mentors' with the skills to offer one-on-one assistance or facilitate group sessions, guiding individuals through the basics of navigating the digital world.

## Caring for Carers Project

Neighbourhood House Barwon has recently undertaken the *Caring for Carers Project*, aimed at finding and supporting those who care for others in our communities.

Carers have the lowest wellbeing of any large group measured by the Australian Unity Wellbeing Index. They often neglect their own health and are 40% more likely to suffer from a chronic health condition. Through the project, social isolation, loneliness, overwhelm, and difficulties navigating services were identified as key challenges for carers.

The focus of the project was to locate hidden carers living on the Surf Coast, host a series of workshops to identify their needs, connect them to their local Neighbourhood House, and co-design a resource guide. This guide was created to help carers navigate services and support while also providing local Neighbourhood Houses with resources to guide carers effectively.

The project engaged over 70 carers, led to the establishment of the Surf Coast Carers Network, the creation of a resource guide, and the formation of three carer support groups. Many organisations and support services have also contributed expertise, leading to a series of upcoming information sessions at Torquay Community House.

This project has been a significant achievement, ensuring ongoing support for carers in our community will continue to grow and develop post-project.



Through the project, social isolation, loneliness, overwhelm, and difficulties navigating services were identified as key challenges for carers.



## Anakie Community House

Anakie  
Community  
House

Anakie & District Community Group, operating from Anakie Community House, was established in December 1986.

Like all neighbourhood houses, we run various classes, courses and workshops, from playgroups to art; carpet bowls to craft; Scrabble to lunches; afternoon teas to breadmaking.

Our neighbourhood house has a big focus on the individual - people can call in anytime during open hours to chat. Times can be tough for anyone, anytime and have been especially so for many people since Covid-19 lockdowns. Therefore, it is nice to be able to just sit and talk one-on-one or in a group. A person's day may start bleak, but a little engagement with others can make all the difference to how their day ends. It works well because everyone who comes to Anakie Community House wants to engage and is happy to be supportive to anyone who may be having a tough time.

One of our services is the free loan of wheelchairs, walkers, toilet seats, crutches and moon boots. All have been donated and are most appreciated by people recovering from injuries and operations.

So, the theme 'caring for community' is one that we are very familiar with. In fact, the logo on our letterheads is 'locals caring for local community'. How very apt!



“

It works well because everyone who comes to Anakie Community House wants to engage and is happy to be supportive to anyone who may be having a tough time.

## Anglesea Community House



This year the Anglesea Community House has had the opportunity to be part of a co design process with the Surf Coast Shire council and local community in coming up with a plan to redevelop the community precinct which ACH currently sits. We are very excited about the possibility of new buildings and better access to children's services as well as opportunities for people of all ages.

In response to some of the discussions around the proposed changes there has been some unrest within the community which is very common when there is change, it was a great opportunity for ACH and their staff to provide people with a space where they felt safe in having respectful conversations especially when there were disagreements.

We revamped our Twilight Market's this year after 4 years of a farmers' market only we were able to open it up to local art and craft. Thanks to an amazing state government grant we were able to update our market signage and purchase new seating and tables to encourage our patrons to sit and enjoy music while eating and socialising. The market is another great opportunity to provide a safe space for community to gather and feel connected.

We were also very fortunate to purchase new items for our childcare by adding some colour to the space and creating some caring safe spaces. Our beautiful childcare staff have done another amazing job at caring and educating our young children with some awesome activities as well as collaborating with local community groups.

We are very fortunate to be in such a beautiful area with an amazing community that looks out for each other with care for people and our local environment. Our resale shed this year raised over \$50,000 for local community groups from selling items that had been thrown away which shows the commitment of our local community in sustainability.

It has been a great year at Anglesea Community House and we look forward to an even better upcoming year.



## Bellarine Training and Community Hub (BTACH)



Bellarine Training and Community Hub (BTACH) supports the community of Ocean Grove and the wider Bellarine Peninsula with key focusses on delivering community based programs, accredited training courses and youth based programs. In 2024 BTACH delivered real impact to the local community through its services and initiatives, some of which include:

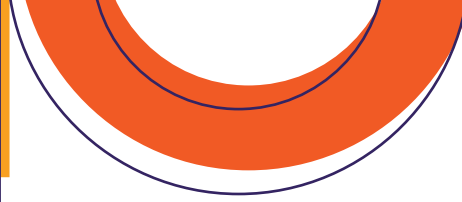
- Over \$7000 donated to local charities.
- 1200 meals distributed to community members
- Over 400 people utilised the centre's facilities each week through program attendance
- Supported over 20 charities with meeting space at no cost on an ongoing basis
- Supported over 30 local businesses utilising services for planned BTACH activities
- Supported over 60 young people each week with various programs and initiatives

Community engagement has continued to be the primary focus at BTACH with the aim of increasing awareness and participation in BTACH programs and promoting BTACH as a central hub for community members to engage with one another. 2024 has continued to deliver higher participation rates in community programs and has also seen a significant increase in new programs delivered locally.

Accredited training has seen an increase in the courses offered at BTACH with the introduction of Certificate III in Early Childhood Education and Support, Certificate IV in Mental Health and Certificate IV in Youth Work. There has also been a need to update Certificate III in Individual Support (Ageing and Disability) and Certificate IV in School Based Education and Support to ensure the best offering to our students. BTACH continues to support our students with work placements and focusses on the student experience with over 94% of students stating that they would recommend BTACH to their friends.

BTACH's Drop In youth program continues to thrive serving between 25 and 40 young people across the Bellarine every Friday. Other initiatives to support local youth needs have been set up with Bellarine Community Health, Ocean Grove library, Headspace, City of Greater Geelong and Bellarine Secondary College. A big thanks goes to the City of Greater Geelong for their support with providing a staff member to assist with delivery of Drop In.





## Cloverdale Community Centre



Over the past year, Cloverdale Community Centre has continued to thrive as a vibrant hub where individuals, families, and groups come together to learn, grow, and support one another. The success of our initiatives reflects the commitment, resilience, and collaboration of everyone in our community.

We've welcomed a cohort of young learners fresh out of school and have been working with them in our learn local programs to pique their interests in various vocational areas, including kitchen operations, woodwork and visual art.

Cloverdale's own social enterprise LOTUS Catering prepared a delicious feast for their first wedding in March of 2024 and has since gone from strength to strength in building the skills and gaining the knowledge to operate an ethical catering business in Australia.

The North Geelong Big Band is starting to gain more paid gigs outside of Cloverdale's own events and have welcomed a number of new members.

We are deeply grateful for the community's continued belief in our programs, activities, and services. The ongoing participation and trust from our community are the heartbeat of everything we do. It is this strong community engagement that motivates us to keep innovating and improving.



# Colac Neighbourhood House



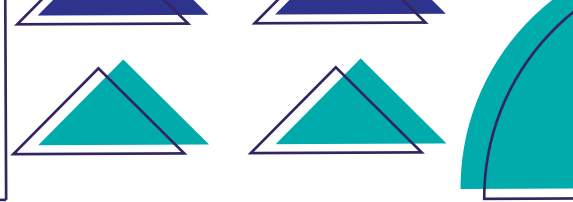
The Colac Neighbourhood House is now becoming known in the community as a place for everyone. We are a place that will support people in the community to be a healthier, informed and more connected community. This has been my first year in the role and I am really proud of the role that the Colac Neighbourhood House plays in the community.

Our partnerships with agencies supporting our community stand out and without the generosity of volunteers, funding from grants and Colac Area health our auspice agency we could not have achieved what we have this year.

We have has some absolutely fabulous programs, activities and new groups to the house this year. Our quilters have donated to the local community and branching out to make even more items for those in need and for Colac Area Health. We have partnered with lots of groups including the Find Your Light Choir, giving those with a disability the chance to sing and preform on stage, school holiday programs, barista courses for our local youth and those looking for work in hospitality, information sessions on local services and issues facing the local community. This year we hosted the Colac Otway Muslim Community every day for Ramadan and continue to support this group. I sometime have to pinch myself to remind me that I have an amazing position in running this house and proud to support the Colac community.

## FROM THE TOP:

- Quilting Group with Mary from South West Community Foundation – awarded grant to group to assist them in making quilts for those in need in the community
- School Holiday Program with Wildlife Xposure
- Proud sponsors and supporters of the Find Your Light Choir with the Red Violets.



## Deans Marsh Community Cottage



Deans Marsh Community House is dedicated to caring for our community. In 2023-24, we enhanced our Cottage Lounge, creating a welcoming space for gathering and collaboration.

Our subsidised weekly classes provide accessible opportunities for improving physical health and mental well-being, and we've introduced a Choir to further encourage creativity and connection. Our diverse events calendar engages the community and supports fundraising for local interest groups. We offer tailored learning workshops to meet the skill needs of our members.

A highlight of our offerings is the monthly Community Dinners, which attract over 100 attendees and involve around 20 dedicated volunteers. We also distribute up to 40 meals to those in need following the dinners. Additionally, we support the Surf Coast Carers Network, including a local Carers Catch group for peer support. Our popular History Chats engage our seniors, while our children's programs and Youth Group provide opportunities for fun and social interaction for younger members. Through these initiatives, we continue to strengthen connections and enhance the overall well-being of Deans Marsh.



A highlight of our offerings is the monthly Community Dinners, which attract over 100 attendees and involve around 20 dedicated volunteers.

## Forrest & District Neighbourhood House



We care for our community in many different ways- intentionally and informally: from a friendly person behind the front desk, welcoming visitors to the Neighbourhood House to delivering home cooked meals around town to those who are sick, infirmed or just might appreciate it.

Together we care for our people, the animals and the natural environment through different activities and initiatives.

The monthly weeding group removed noxious weeds and replants natives on a local walking track, the singing group provides a sense of comradery and calm, the youth shed welcomes young people from all back grounds to a space that is theirs, monthly seniors morning tea brings our elders together and community lunch nourishes the body as well as the soul.



These types of activities and many more connect us and makes our community one that cares for each other.

## Geelong West Neighbourhood House



Over the past year, we have expanded our focus beyond our regular programs and classes to include additional community activities. Each talk was followed by a healthy lunch, creating a wonderful opportunity for participants to connect and share experiences.

Looking ahead, we are eager to secure funding to relaunch this program next year, aiming for an even larger and more impactful series of events. Additionally, we are thrilled to announce that we have successfully obtained funding from Benefit Geelong to establish a community kitchen. We are in the process of setting it up and are excited to offer a variety of engaging Community Kitchen programs soon. Stay tuned for more updates!

# Gellibrand Community House



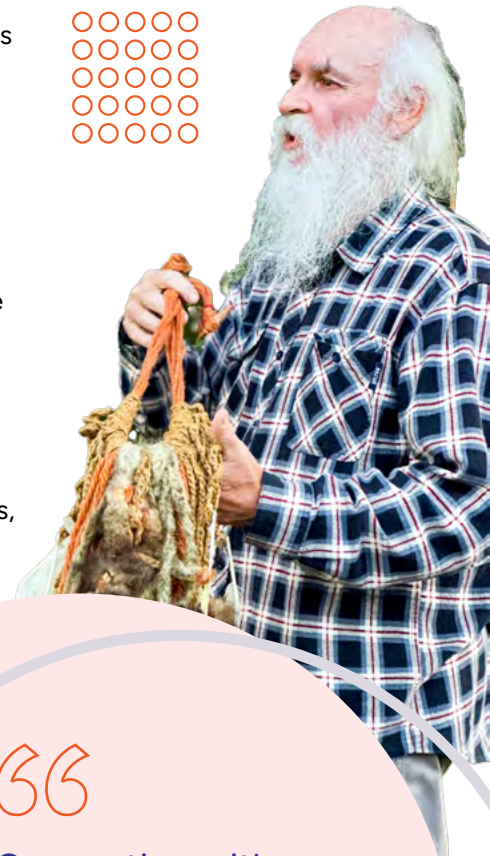
This year, Gellibrand Community House has been busier than ever, bringing people together and strengthening our bonds. Our monthly Community Lunches have been a highlight, offering a space to share meals and stories in the newly renovated supper room.

The Biggest Morning Tea remains an important fundraiser for us, as cancer has touched many lives in Gellibrand, and it's a cause close to our hearts.

Connecting with our Traditional Owners and learning from their wisdom has been one of the highlights for us this year. We're excited to be co-creating a fire pit that will blend local features, Indigenous stories, and community spirit. This space will foster stronger connections and create a place where everyone can come together.

Our regular Dungeons & Dragons group has been a fantastic outlet for young people to come together and explore their imaginations in a world of trolls, elves, and magic. The group is self-run, empowering the kids to organize and manage sessions, with our guidance and supervision.

And of course, the annual Golden Gumboot event during the September holidays continues to be a family favourite, encouraging everyone to get outdoors, have fun, be creative and explore the Beechy Rail Trail.



“

Connecting with our Traditional Owners and learning from their wisdom has been one of the highlights for us this year.



## Grovedale Neighbourhood House



Throughout 2023 and 2024 Grovedale Neighbourhood House delivered a successful Taster Series program funded by the City of Greater Geelong through its Community Investment and Support Fund. The program focused on creating new experiences and opportunities to support positive wellbeing and social connection.

The activities offered included Tai Chi, Art Journaling for Wellbeing, Mandala Power, Rooted in Wellness - Terrarium-making, Kokedama, Macrame Gelato Pot Hangers, Macrame Spiral Plant Hangers, Macrame Wallhanging, Linocut, and Mixed Media.

A total of 41 sessions were offered across 4 terms to provide as much opportunity as possible for people to participate, with our most popular activities offered on multiple occasions.

Feedback received was positive with an overwhelming majority of participants rating the sessions and the facilitators as excellent. Participants also indicated that they enjoyed the social element of the activities as much as the activities themselves.



## Leopold Community & Learning Centre



The new programs offered this year at the Leopold Community & Learning Centre (LC&LC) have been extremely diverse; from Mahjong, a game of skill and strategy to Belly Dancing which requires a completely different set of skills!

LC&LC has supported our community this year by offering activities/programs such as:

- An Introduction to My Aged Care - workshop for families and carers new to the My Aged Care System run by Carers Victoria.
- Providing a Justice of the Peace to be available by appointment at the Centre.

- Fifteen-minute hearing checks for adults run by Hearing Australia as part of their Hearing the Nation Tour 2024.
- Wiser Driver Course for seniors held over four sessions to upgrade knowledge and build on experience to keep seniors driving safely.

All of these programs were able to be delivered free of charge to the community.

Our Chatty Café which is run by volunteers 2 mornings per week, is still creating a warm and friendly place to meet; It is the perfect way for strangers to connect with others in the community.



## Lorne Community House



Supporting our community takes on many forms, depending on who steps through our doors or reaches out to us.

Just today, we organized a food parcel for a young adult in need, as their pension won't be available for a few days.

Earlier, we celebrated a community member who received their very first pension payment. As a Centrelink Agency, we've been assisting him through his initial experiences with Services Australia. While these processes can often be perplexing and sometimes frustrating, we make it a priority to ensure our community members feel cared for.

Being a new parent in a small town can feel lonely at times. That's why our weekly playgroup is so important; it provides a welcoming space for families to gather, learn about child development, and connect with others who are navigating similar experiences.

This afternoon, we're excited to host our regular games group, where a small but enthusiastic group of seniors enjoys not just the games, but the lively conversations that come with them.

We are a hub of connection, recognizing that many who visit us are seeking interaction with our staff and fellow community members, often more than the original purpose of their visit.



# Marrar Woorn Neighbourhood House



It was a wonderful year at Marrar Woorn Neighbourhood House, as we picked back up our ACFE funding this year and provided our community with many opportunities for lifelong learning. The funding allowed us to provide the community with about one workshop per week. We had people learning about making cheese, composting, sourdough making, graphic design, digital marketing, being a barista, keeping chickens and much more.

We've also started community dinners, where we hosted up to 140 community members. Not bad for a town with 1800 residents! The students from the local school cooked and all the profits from the dinner went to our food security program. Our food security program is thriving too, with 850 kilos of food per week being distributed over our community.

For the little ones we have the toy library, with a playgroup every week where preschoolers gather, and we can check in on young families that are currently doing it tough in our area. Really high housing costs, housing insecurity, cost of living crisis and lack of childcare is adding to the stressors of young families. For the school aged kids, we are working together with the school providing 50 kilos of fresh fruit they access during recess, and we have a Youth Art Group every Wednesday afternoon.

In October, we hosted our second Children's Open Day this year - at the first one 300 parents and kids came through. We hosted a wonderful Halloween party the week after.



For our seasoned citizens we have a monthly dance therapy get together that is all-abilities, and a weekly open art studio where people create together. We also hosted another Biggest Morning Tea, which was busy and beautiful. All our adult education is free for retirees.

## Norlane Community Centre



In 2024, our community has demonstrated remarkable strength and resilience in the face of ongoing challenges. Numerous individuals have encountered difficulties related to the rising cost of living, impacting their ability to pay bills, purchase groceries, and secure or maintain stable housing.

Our dedicated volunteers have been instrumental in assisting those in need, providing support such as liaising with energy providers for financial relief, and offering resources for individuals affected by domestic violence and/or seeking safe and warm shelter.

This year, we introduced our free Community Meal program, which has allowed individuals to enjoy a freshly prepared meal in a safe environment, providing a respite from their daily challenges. Additionally, our weekly food share has seen an increase in participation, enabling more community members to access fresh fruits, vegetables, and frozen meals, reflecting just how valuable services like these are in the community.

Our newly launched peer-led art program Antifragile, designed for individuals experiencing mental health challenges, has gained significant traction. It offers a safe and supportive space for self-expression and fostering discussions around stereotypes.



As we look ahead to 2025, we remain committed to expanding and enhancing our existing programs while exploring new initiatives to further support and care for our community.

# Portarlington Neighbourhood House



With the effects of the cost-of-living crisis affecting our community, the Portarlington Neighbourhood House (PNH) continues to focus on combatting social isolation. Offering affordable activities and access to services are our priority, to help ensure people continue to participate in their local community. From nature rambles to craft activities, music sessions to exercise classes, PNH offers activities for minimal cost that provide opportunities for social connection and improved mental health.



Highlights include offering free hearing tests via Hearing Australia, prioritising regular free social events for the community, and introducing a free playgroup on Friday mornings for local families, utilising the Portarlington toy library. The PNH Repair Shop offers repair of household items in return for a small donation.

With the help of grant funding, we are offering free Ready Steady Go Kids and Kids Yoga sessions in October, as building a much-needed local network for young families is a key priority. PNH has plans for a 2025 community kitchen program which we aim to deliver in conjunction with other local community groups and are currently investigating a youth outreach program for Portarlington.

As always, the PNH program relies on the wonderful volunteers who support the real work done in Caring for our Community in Portarlington.



## Destashing in Portarlington

A new free market is coming to Portarlington for people to buy and sell unwanted craft supplies.

Anne Egan said she would be hosting the stall at the market with a friend and looking forward to people sharing different arts and crafts.

"The Dots are a great idea because we get to virtually re-use our stuff because I've seen it all in the market with a friend and looking forward to people sharing different arts and crafts."

"I went through my stuff that I had at home and got together pieces that I've used some of and don't really need I'm going to use again."

Portarlington Neighbourhood House's Kate Hynes said that if the market goes well, there's a chance for it to become a regular event for the region's creatives.

"We've had indications that there's a demand there for it and we're always looking for ways for the wider community to become involved in what we do," she said.

"People are looking for these particular products, offhand their stuff and buy more craft supplies as their demand for the plenty of community support and demand for it."

"We've got 16 store holders, and we have a few people on our waiting list, and we're working with the Portarlington Local Market as they will have their monthly market at this time."

The Dots Market is at Park Hall on 87 Northcote Street from 10am to 3pm on Sunday, April 28.

Bina Carr



DRAWING & SKETCHING



## Rosewall Community Centre



Caring for Community is a philosophy that not only underpins the programs and services we deliver at Rosewall but embodies the manner we welcome people into our spaces. No matter who you are or what brings you to the Community Centre, we place a high emphasis on respect, approachability and empathy. In this past year, we know cost-of-living pressures have weighed heavily on households and we have been grateful to partner with agencies such as Geelong Food Relief Centre, Uniting Barwon, and the Give Where You Live Foundation to provide increased opportunities for food relief and material assistance through the Centre. This year we also held respect and empathy close as we provided opportunities for people to engage with the Referendum on the National Voice to Parliament, supporting people to make a meaningful and considered choice about their vote.

It has been a year of continued growth for Rosewall and among the new programs introduced include a new Mind & Body wellbeing course and a genealogy group. We had a concerted focus on youth employment and supported 99 participants to complete 16 accredited, pre-accredited, or informal courses, with fees fully subsidised for participants. We remain committed to providing equitable access to social connection and lifelong learning and look forward to working with the Corio community in the year ahead.



## South Barwon Community Centre



The past year has been a year of growth and celebration at South Barwon Community Centre thanks to volunteers, students and staff.

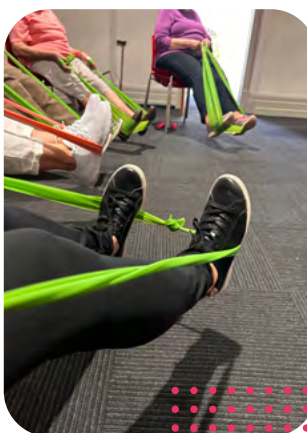
Thanks to our many volunteer gardeners and support of many groups including the City of Greater Geelong, our garden is growing and blooming. The wider community are able to appreciate the plants and art with seasonal vegetables and herbs enjoyed by many.



Our Jigsaw Library continues to develop with frequent new members and generous puzzle donations. We are in the process of introducing a new group called SBCC Jigsaw Junkies which will allow puzzle enthusiasts to socialise.

SBCC runs many groups which focus on a range of areas: the arts; exercise health & wellbeing; and technology. 'SBCC Social Cuppas' has recently started and 3D printing has come to the Centre. For Twenty-One year's Scribes Writers has been a dynamic group where Local writers can gather to create and explore, develop skills and find fellowship. Our Recycle Station is greatly appreciated by the environmentally conscious and everyone loves the flowers donated by Lions Club of Geelong Breakfast & Geelong Flower Farm.

We are lucky to have numerous rooms which we can hire to various community groups, one of which is The Geelong Regional Orchid Group (GROW) who recently held their annual exhibition/sales.



## SpringDale Neighbourhood Centre



“

We have enabled thousands of hours of social interaction and connection through our more than 50 Special Interest Groups and thousands of hours of confidence and skill building through our extensive range of classes and workshops.

SpringDale Neighbourhood Centre has 628 members and 85 of those are Members for Life. We have produced 11 editions of the SpringDale Messenger and home delivered more than 160,000 copies of this celebrated, award-winning magazine by our happy network of volunteers.

We have enabled thousands of hours of social interaction and connection through our more than 50 Special Interest Groups and thousands of hours of confidence and skill building through our extensive range of classes and workshops.

Our range of specialised services continues to grow from photocopying, faxing, emailing, scanning, shredding and binding to include assistance with applying for a Working with Children Check, applying for a passport/renewal to even helping a lady gain citizenship after living in Australia for more than 70 years.

We have a variety of social enterprises including Bokashi food scrap recycling products, second hand books and some goods, Bespoke Bellarine Bellarine for hire and we have Bespoke Names from Crayons has been a new enterprise in the last 12 months.

A fantastic group of volunteers helped to prepare, cook and present more than 1000 Christmas meals to brighten many lives at Christmas time and we are ready to do it again this year supported by community grants from City of Greater Geelong.

We appreciate all the support we gain from Federal, State and Local governments, from local businesses and community groups, but especially the support we gain from our local community. SpringDale Neighbourhood Centre where ideas grow and people flourish.

## Torquay Community House

In the past year, Torquay Community House has made significant strides in strengthening its role as a vital hub for local residents. One of the key achievements has been the growth of the Free Community Lunch Program, providing social connection and volunteering opportunities for community members and local High School students. TCH has also grown the diverse range of regular programs that we offer, including an all abilities art group, active movement classes and the ever popular Messy Playgroup.

Throughout the year we participated in the Barwon Network Carers Project, leading to the establishment of the Surf Coast Carers Network. The project has allowed us to engage carers across the region, and provided opportunities for collaboration and direction in our future offerings for carers and their loved ones.

TCH continues to thrive thanks to our fabulous staff and volunteers. Their unwavering support and commitment to TCH and the local community is invaluable. Together, their efforts continue to strengthen our community and ensure the ongoing success of our programs.



# Vines Road Community Centre



The last 12 months for Vines Road Community Centre have been an adventure in rebuilding, reopening, reimagining and reinvigorating following the 2023 summer flood and long repair period that followed. But we are proud to say that we are back and finding new ways to offer care and engage every week!

This year, one standout new offering is the commencement of our own 'Dementia Support Group', a popular group facilitated by a passionate and committed volunteer that offers connection, understanding and a huge dose of fun. The establishment of this group has led to great partnerships with other support organisations, extending our reach to those in need of support, particularly to carers in the region.

Connecting with likeminded organisations has been a theme of 2023 / 2024 which helps us to offer more despite our limited resources. Our community has benefited from these connections with cooking classes, digital literacy, class vouchers, food relief and grant assistance which has enabled us to meet need, purchase equipment and run some awesome events.

One of these events, which is in its 4<sup>th</sup> year this year, is our 'Christmas Morning Tea @ VRCC'. 2023 was our biggest morning tea yet with at least 200 guests. We have live music, Santa, lucky door prizes, distinguished guests and yummy food! We hope to see you this year, Wednesday 18<sup>th</sup> December at 10am for this super fabulous community party.

In the last few years, we have purposefully worked to widen our demographic, which historically has been mostly senior. While we love working on our older visitors' engagement activities, I can confirm that we have achieved this goal! We began with our own Playgroup, which led to a CoGG supported Playgroup joining the fold, followed by the Empowerment Challenge supporting young mums. In the last year we have welcomed GAMBA, BOPS Music, Kangatraining and more. VRCC now offers more than 10 programs for our little visitors!

At VRCC we care about connecting and we care about purpose. Our members have been acknowledged by a calendar full of Morning Tea dates this year, all organised and catered for by our own wonderful team of volunteers. This last year we have expanded our volunteer team with more wonderful people that care about the community and want to make a genuine difference. We feel incredibly lucky to have this team working together for our area.

# Whittington Neighbourhood House



Whittington Neighbourhood House is committed to promoting mental health and well-being within the 3219 community by cultivating a welcoming and safe environment. We provide a range of opportunities for support, connection, empowerment, and personal growth. In the past year, we have offered activities such as Gentle Yoga and Mindfulness, Ceramics Classes, Craft and Cuppa sessions, a Monday Walking Group, and Book Chats. These initiatives are designed to enhance mental well-being, foster community engagement, and offer valuable resources for individuals seeking support.

The Whittington Neighbourhood House Foodbank Program plays a crucial role in supporting families and individuals experiencing food insecurity. In the 2023-2024 FY, the program served 3,900 individuals, typically representing families of three. Our ready-made meals and meals prepared in collaboration with dedicated volunteers, increased to 7,240 over the year.

As demand for the Foodbank has steadily risen, we have expanded our services to ensure that no one is turned away. This growth has been facilitated by strategic budget management, generous local donations, partnerships with food suppliers, and the unwavering commitment of our volunteers.

In addition to providing essential food support, the Foodbank Program fosters social connections and community resilience. Through outreach efforts and collaborations with local organisations, we connect individuals to vital resources, including job training, employment services, mental health support, and educational opportunities. By addressing both immediate needs and the underlying causes of food insecurity, the program has become a cornerstone of the 3219 community, offering not only nourishment but also hope and pathways to long-term well-being.

Whittington Neighbourhood House offers a range of Learn Local programs and community activities that provide valuable educational and social opportunities for the 3219 community. Programs are designed to support people of all abilities in building new skills and connecting with others. Our volunteer recruitment has increased by 90%, and we are especially grateful to our incredible volunteers for the diverse skills and talents they bring in supporting the house and its programs. Their dedication is key to fostering a thriving and inclusive community.



We extend deep gratitude to our funders, partners, dedicated members, passionate individuals, community groups and businesses that constitute our vibrant community. Your unwavering support and involvement have been the cornerstone of our success and growth this past year.

## Winchelsea Community House



Winchelsea Community House along with the other Surf Coast houses took part in a Caring for Carer's Project during the first half of 2024. A session was held at our Community House for carer's in our area and was very well received to be able to chat with other carer's and receive some valuable information about all the carer services and tools available. Following on from this the Carer's project was launched over at Torquay Community House where several providers of carer services as well as the Community Houses came together to celebrate the project.

We are now running an ongoing Carer's Corner once a month so that carer's can still come and chat with others.

Another popular session we run is the Friday "Chatty Café". This is a drop in session for anyone to be able to come along and have a cuppa and a chat. It normally runs from 10.30am till 12 ish in the Shire Hall space at the front of the building.

The Winchelsea Community House in conjunction with Hesse Rural Health has also set up a Community Foodbank which runs on Fridays from 12 noon till 2pm. With the current economic climate impacting everyone this has been an extremely well received initiative.



We understand how important social connection is and particularly in smaller towns such as Winchelsea. Our Community House focuses on Caring for Community and is always willing to help in any way we can.

# Treasurer's Report

Following on from a deficit in the 2022/2023 financials due to investing money into some incredible programs we set the 2023/2024 budget with the potential to come out even, due to staff changes our wages increased as we had to pay out leave balances and time in lieu to our leaving staff members. We came out with a deficit of \$12,210.55. In previous years the committee have managed to build retained earnings which have covered the extra expenses and continue to ensure a financially viable service for the future.

The network continues to be in a healthy financial position as it currently has just over \$110,000 in retained funds at the end of the financial year which will continue to be allocated towards different projects in the coming years as well as ensuring the financial viability of the network. Some of these retained funds will be kept in reserve to make sure as per our policies that we always have access to six months advance of operational funds.

We were successful in receiving grants for a digital mentors program through Good Things Australia and also a grant from Carers Victoria for a care for the carers program in the Surf Coast. This is the main reason that our grant funding is a lot higher than previous years. This is reflected in both our wages and contractor's expenses.

The network continues to be supported by the Department of Families, Fairness and Housing (DFFH) who provide us with funding that covers the wages of our networker and community development worker.

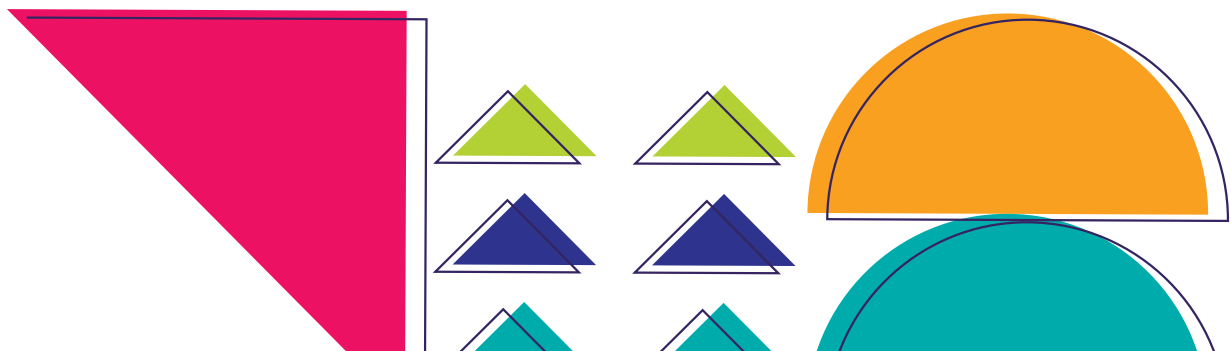
We are also fortunate to continue to receive grants from City of Greater Geelong, Surf Coast Shire and Colac Otway Shire Councils to support neighbourhood houses in their municipalities. We were also successful in receiving additional grant funding from the City of Greater Geelong which was for child safe training and also to support the implementation of our RAP.

We thank Summer McDermott from Fern Accounts as our bookkeeper. Fern has continued to work with the network staff and committee to keep up to date with our financials.

I would also like to thank Margaret STS accounting for providing us with their professional services to complete our audit for the financial year and supporting our network staff.

We move into 2024/2025 again in a healthy financial position as look forward to supporting the whole Barwon network through more projects and support.

**JULIE MARTIN**  
Treasurer





**STS**  
ACCOUNTING  
GROUP

Surfcoast Taxation Services Pty Ltd

ACN 097 406 472

Certified Practicing Accountants

## INDEPENDENT AUDITOR'S REPORT

To the members of Neighbourhood Houses Barwon Inc

### Report on the Audit of the Financial Report

#### *Opinion*

I have audited the accompanying financial report, being a special purpose financial report of the Neighbourhood Houses Barwon Inc., which comprises the Balance Sheet, Profit & Loss, and Notes to the Financial Statements for the financial year ended 30 June 2024.

#### *Basis for Qualification*

As is common for organizations of this type, it is not practicable for the Neighbourhood Houses Barwon Inc to maintain an effective system of internal control over monies received until its initial entry in the accounting records. Accordingly, my audit in relation to cash receipts was limited to amounts recorded.

#### *Auditor's Qualified Opinion*

In my opinion, subject to the effects of such adjustments, if any, as might have been determined to be necessary had the limitation discussed in the qualification paragraph not existed, the financial report of the Neighbourhood Houses Barwon Inc presents a true and fair view of the results of the Neighbourhood Houses Barwon Inc operations and cash flows for the year ended 30 June 2024 and its financial position as at that date in accordance with the accounting policies described in Note 1 to the accounts.

#### *Basis for opinion*

I conducted my audit in accordance with Australian Auditing Standards. My responsibilities under those standards are further described in the *Auditor's Responsibilities for the Audit of the Financial Report* section of my report. I am independent of the entity in accordance with the *Associations Incorporation Reform Act 2012 (Vic)* and the ethical requirements of the Accounting Professional and Ethical Standards Board's APES 110 *Code of Ethics for Professional Accountants* (the Code) that are relevant to our audit of the financial report in Australia. I have also fulfilled my other ethical responsibilities in accordance with the Code.

I believe that the audit evidence I have obtained is sufficient and appropriate to provide a basis for my opinion.

Surfcoast: 15B Dunes Village  
Fischer Street  
Torquay Vic 3228

Postal: P.O. Box 178  
Torquay Vic 3228

Tel: (03) 5261 2262  
Email: admin@surftax.com.au

[www.surftax.com.au](http://www.surftax.com.au)

*Liability limited by a scheme approved under Professional Standards Legislation*

Winchelsea: 22 Willis Street  
Winchelsea Vic 3241

Postal: P.O. Box 40  
Winchelsea Vic 3241

Tel: (03) 5267 2673  
Email: winch@surftax.com.au

Without modifying my opinion, I draw attention to Note 1 of the financial report, which describes the basis of accounting. The financial report has been prepared for the purpose of fulfilling the Board's financial reporting responsibilities under the *Associations Incorporation Reform Act 2012 (Vic)*. As a result, the financial report may not be suitable for another purpose.

### ***Responsibility of the Board of Management for the Financial Report***

The Board of Management responsible for the preparation and fair presentation of the financial report in accordance with the requirements of the *Associations Incorporation Reform Act 2012 (Vic)* and for such internal control as the Board members determine is necessary to enable the preparation and fair presentation of a financial report that is free from material misstatement, whether due to fraud or error. In preparing the financial report, the directors are responsible for assessing the Committee's ability to continue as a going concern, disclosing, as applicable, matters relating to going concern and using the going concern basis of accounting unless the Board members either intend to liquidate the **Committee** or to cease operations, or have no realistic alternative but to do so.

The Board of Management is responsible for overseeing the Committee's financial reporting process.

### ***Auditor's Responsibilities for the Audit of the Financial Report***

My objective is to obtain reasonable assurance about whether the financial report, as a whole is free from material misstatement, whether due to fraud or error, and to issue an auditor's report that includes my opinion. Reasonable assurance is a high level of assurance, but is not a guarantee that audits conducted in accordance with the Australian Auditing Standards will always detect a material misstatement when it exists. Misstatements can arise from fraud or error and are considered material if, individually or in the aggregate, they could reasonably be expected to influence the economic decisions of users taken on the basis of the financial report.

As part of an audit in accordance with Australian Auditing Standards, I exercise professional judgement and maintain professional scepticism throughout the audit. I also:

- Identify and assess the risks of material misstatement of the financial report, whether due to fraud or error, design and perform audit procedures responsive to those risks, and obtain audit evidence that is sufficient and appropriate to provide a basis for our [my] opinion. The risk of not detecting a material misstatement resulting from fraud is higher than for one resulting from error, as fraud may involve collusion, forgery, intentional omissions, misrepresentations, or the override of internal control.
- Obtain an understanding of internal control relevant to the audit in order to design audit procedures that are appropriate in the circumstances, but not for the purpose of expressing an opinion on the effectiveness of the registered entity's internal control.
- Evaluate the appropriateness of accounting policies used and the reasonableness of accounting estimates and related disclosures made by responsible entities.
- Conclude on the appropriateness of the entities' use of the going concern basis of accounting and, based on the audit evidence obtained, whether a material uncertainty exists related to events or conditions that may cast significant doubt on the registered entity's ability to continue as a going concern. If I conclude that a material uncertainty exists, I am required to draw attention in my auditor's report to the related disclosures in the financial report or, if such disclosures are inadequate, to modify my opinion. My conclusions are based on the audit evidence obtained up to the date of my auditor's report. However, future events or conditions may cause the entity to cease to continue as a going concern.
- Evaluate the overall presentation, structure and content of the financial report, including the disclosures, and whether the financial report represents the underlying transactions and events in a manner that achieves fair presentation.

I communicate with the Board regarding, among other matters, the planned scope and timing of the audit and significant audit findings, including any significant deficiencies in internal control that I identify during my audit.



**Margaret Leigh, CPA**

**STS Accounting Group**

Dated 07 November 2024

# Balance Sheet

## Neighbourhood Houses Barwon Inc As at 30 June 2024

	30 JUNE 2024	30 JUNE 2023
<b>Assets</b>		
<b>Bank</b>		
NHB Debit Card	173.45	711.40
NHB Savings	70,904.20	69,885.37
NHB Statement Account	102,897.67	104,911.73
<b>Total Bank</b>	<b>173,975.32</b>	<b>175,508.50</b>
<b>Current Assets</b>		
Load & Go Card	1.00	1.00
<b>Total Current Assets</b>	<b>1.00</b>	<b>1.00</b>
<b>Fixed Assets</b>		
Office Equipment	1,068.18	1,068.18
<b>Total Fixed Assets</b>	<b>1,068.18</b>	<b>1,068.18</b>
<b>Total Assets</b>	<b>175,044.50</b>	<b>176,577.68</b>
<b>Liabilities</b>		
<b>Current Liabilities</b>		
Accounts Payable	8,856.39	7,273.60
GST	(703.98)	(58.13)
Superannuation Payable	4,752.90	2,885.47
Suspense	0.01	0.01
<b>Total Current Liabilities</b>	<b>12,905.32</b>	<b>10,100.95</b>
<b>Non-current Liabilities</b>		
ATO Integrated Client Account	7,873.00	-
Grants Received in Advance	34,723.58	34,723.58
Provision for Leave Entitlements	9,154.83	9,154.83
<b>Total Non-current Liabilities</b>	<b>51,751.41</b>	<b>43,878.41</b>
<b>Total Liabilities</b>	<b>64,656.73</b>	<b>53,979.36</b>
<b>Net Assets</b>	<b>110,387.77</b>	<b>122,598.32</b>
<b>Equity</b>		
Current Year Earnings	(12,210.55)	(30,865.44)
Retained Earnings	122,598.32	153,463.76
<b>Total Equity</b>	<b>110,387.77</b>	<b>122,598.32</b>

# Profit and Loss

## Neighbourhood Houses Barwon Inc For the year ended 30 June 2024

	2024	2023
<strong>Trading Income</strong>		
Grant Funding	200,458.10	121,387.59
Interest Income	1,018.83	513.03
Membership Income	2,400.00	2,450.00
Other Income	2,326.55	7,344.00
<strong>Total Trading Income</strong>	<strong>206,203.48</strong>	<strong>131,694.62</strong>
<strong>Cost of Sales</strong>		
COGG Grant Expenses	-	929.89
Community Development	-	200.00
DHS Support NH	(908.70)	4,203.10
<strong>Total Cost of Sales</strong>	<strong>(908.70)</strong>	<strong>5,332.99</strong>
<strong>Gross Profit</strong>	<strong>207,112.18</strong>	<strong>126,361.63</strong>
<strong>Operating Expenses</strong>		
Accounting & Bookkeeping	8,785.00	12,702.36
Advertising	2,416.57	2,700.00
Bank Fees	24.33	27.52
Catering & Event Expenses	5,282.64	3,946.25
Consultants & Contractors	44,433.11	4,945.00
Entertainment	2,500.00	339.54
Equipment <\$1000	-	3,018.44
HR Expenses	2,948.64	1,820.95
Industry Memberships	1,840.45	800.03
LSL Entitlement - Portable	1,653.70	1,344.06
Office Expenses	26.36	-
Postage & Freight	84.61	-
Printing & Stationery	4,975.34	2,436.11
Professional Development	4,969.10	464.02
Rent	3,279.10	3,822.29
Staff Amenties	130.39	104.72
Subscriptions	1,561.43	1,596.82
Superannuation	12,849.26	10,323.73
Telephone & Internet	432.32	228.69
Travel - National	10.13	0.21
Travel Expenses	4,936.83	1,629.81
Wages and Salaries	116,183.42	104,976.52
<strong>Total Operating Expenses</strong>	<strong>219,322.73</strong>	<strong>157,227.07</strong>
<strong>Net Profit</strong>	<strong>(12,210.55)</strong>	<strong>(30,865.44)</strong>

This page was intentionally left blank



45 Heyers Road, Grovedale 3216  
Mobile: 0481 566 774  
Email: [info@nhbarwon.org.au](mailto:info@nhbarwon.org.au)  
[www.nhbarwon.org.au](http://www.nhbarwon.org.au)